

# Winnisquam Echo

THURSDAY, APRIL 14, 2022

SERVING TILTON, NORTHFIELD, BELMONT &amp; SANBORNTON, N.H.

FREE

## New Peabody Place formally opens after ribbon-cutting Ceremony

FRANKLIN — A celebratory crowd of employees, board members, employees, friends, dignitaries and contractors were on hand at the brand-new Peabody Place to gather, tell stories and raise a glass to the completion of phase one of an ambitious renovation project. The formal ceremony took place on Thursday, March 31 and less than two days later, all members of the 1940's era former Peabody Home began moving as the inaugural first members of Peabody Place.

"The work here started 80 years ago when four ladies bought the property and had a vision," said John Benham, a long-time board member and volunteer who chairs the building committee. "The board



Franklin Mayor Jo Brown, Peabody Place Chair of the Board of Directors Chris Seufert and Engelberth CEO Pierre LeBlanc at Peabody Place ribbon cutting ceremony on March 31.

had a vision for the new Peabody Place, which we have been working towards for the past six to eight years, with the understanding that we had to continue what started 80 years ago. Now, we're ready for another 80 years."

Peabody Place is pet-welcoming and features well-appointed apartments with private bathrooms, oversized windows and unique views of the Winnepesaukee River. Amenities include common space for gathering on all floors, a 24-hour emergency response system, memory care services, apartments in a dedicated section of the building, personal transportation services, a beauty and barber shop, an exercise and wellness

SEE PEABODY PAGE A6

## Numbers up for Winnisquam softball

BY JOSHUA SPAULDING  
Sports Editor

TILTON — After a season where the Winnisquam softball team often went to battle with just eight players available, coach Mark Dawalga is happy to see a larger group heading to the diamond this spring.

"We will look to keep getting better every inning, every pitch and every game as well as every practice," Dawalga said. "After last year with only eight players, we have grown as a group."

"This year is exciting to be able to have a JV team again," he continued. "I know the team is excited to play."

The Bears will look to

seniors Lea Dalton and Emma Griffin to lead the way and they will be anchoring the right side of the infield, with Dalton at second base and Griffin at first base.

"These two have been with the program for the past four years and been through the good times and the tough times," Dawalga said. "They know how to win."

Juniors Delaney Skourtis, Laura Slate, Lily Auger, Teagan Nelson and Rebecca Kulengosky are also back in the fold for the Bears and Skourtis and Slate will be counted on to do the pitching for the Bears in the new season. Also back in the fold is sopho-

more Lucy Prunier.

"The key will be, like everyone, pitching, and we will rely on Delaney and Laura," Dawalga said. "With last season being their first time on the mound, they have come a long way and work hard every day in practice to get better."

"We will be leaning on our returning players a lot this year as we try to bring everyone up to speed and gain varsity experience," the Bear coach added.

Winnisquam will be welcoming senior Riley Tobin and freshmen Isabella Dill, Alicia Max and Shayla Jordan to the squad this year.

SEE SOFTBALL PAGE A6



## Upcoming events at Canterbury Shaker Village

CANTERBURY — Canterbury Shaker Village is excited to announce the following events during the month of April.

Village Clean Up Day  
Saturday, April 23, 9 a.m. – noon

Village Clean Up Day is Saturday, April 23. Celebrate Earth Day Weekend by helping clean up Canterbury Shaker Village and show your love for one of New Hampshire's National Historic Landmarks. After a long winter, gather with a community of volunteers and be a part of the effort to get the Village grounds looking their best for the opening season.

Clean up efforts will take place from 9 a.m. – noon, and includes raking, pruning, clearing debris, weeding, etc. All ages are encouraged to help, and families are welcomed! Please wear comfortable

work clothes, appropriate shoes, and bring your own tools/materials such as gardening gloves, rakes, shovels, etc.

For any questions about volunteering for Village Clean Up Day, please email Jill Lessard at [jlessard@shakers.org](mailto:jlessard@shakers.org) or call 603-783-9511, ext. 202.

Make Your Own Dreamcatcher with Native American Artist Lenny Novak  
Saturday, April 30, 2 – 3:30 p.m.

Create your own dreamcatcher in the Ojibway web tradition under the tutelage of Native American artist Lenny Novak at Canterbury Shaker Village on Saturday, April 30 from 2 – 3:30 p.m.

Novak has given classes for more than 40 years at museums, schools, and requested locations both indoors

and out. After sharing a bit of history about the dreamcatcher – its meaning, stories, and lore – he then gently guides participants through the process of working with their materials – natural wood hoops, webbing, beads, and feathers.

To honor his own heritage and the Native American custom of gifting, Novak donates his time and materials to teach Dreamcatcher-making to nonprofits having to do with nature, Natives, and community.

Novak's work can be seen in the Mount Kearsage Indian Museum in Warner, has been exhibited by the Great Plains Museum in Lincoln, Neb.; was part of the Contemporary Native American Artists of the 21st Century Exhibition in Springfield, Mass.; and was donated to the permanent collection of the Cherokee

SEE VILLAGE PAGE A6

## Raider baseball looking for consistency in 2022

BY JOSHUA SPAULDING  
Sports Editor

BELMONT — Consistency will be key as the Belmont baseball team looks to improve on an up and down season.

"Though returning five starters, (we) are relatively inexperienced at the varsity level," said veteran coach Matt LeBlanc. "The team is hoping to develop their younger players, getting them experience, while remaining competitive and having the chance to be in every game."

Players back on the diamond for LeBlanc include seniors Jonny Phillips, Jason Roberts, Andrew Rowley and

Miles Miller, juniors Liam Waldron and Matt Krasnecki and sophomore Hutch Haskins.

Phillips will be looking at time in center, at first and at shortstop, Waldron will likely anchor the team's pitching staff and will also play shortstop, Haskins will work behind the plate and in the infield, Roberts will see time in the outfield and as designated hitter, Rowley will see time at second and in the outfield, Krasnecki will be on the mound and in the outfield and Miller will see time on the hill.

New to the team are senior Tim Houser, junior Isaiah Lambert and

freshmen Owen Waldron, Anakin Underhill and Jaxson Embree.

Waldron returns as a Second Team All-State selection from a year ago and will lead the pitching staff.

"He will be followed by Anakin Underhill, Isaiah Lambert, Matt Krasnecki, Miles Miller and Jaxson Embree, who combined, have pitched 16 varsity innings," LeBlanc stated.

After a regional schedule last year thanks to the COVID-19 pandemic, the Raiders are back to the normal Division III schedule this spring. Belmont will be

SEE BASEBALL PAGE A6

# LRSO looks at “Broadway – Then and Now” May 14 & 15



Ashley Meeken

MEREDITH — The Lakes Region Symphony Orchestra, under the direction of conductor and music director Benjamin Greene, invites you to the final concerts of our remarkable 2021-2022 season with two performances on Saturday May 14 at 7 p.m. at Inter-Lakes Auditorium

in Meredith, and Sunday, May 15 at 3 p.m. at the Colonial Theatre in Laconia.

These POPS concerts take a modern twist on the traditional Broadway theme. We are all familiar with classic hits from the likes of “Oklahoma” and “South Pacific,” but many of the

more modern classics get a bit less concert coverage. With the help of performance icon Ashley Meeken, LRSO will entertain you with a mélange of Broadway hits spanning the decades including memorable tunes from “Guys and Dolls” and “Kiss Me Kate,” to the modern era of “Wicked,” “The Greatest Showman,” and “Carole King The Musical.”

Meeken will showcase her vocal and performance versatility with selections including “Adelaide’s Lament” from “Guys and Dolls,” “If My Friends Could See Me Now” from “Sweet Charity,” “I Don’t Know How to Love Him” from “Jesus Christ Superstar,” “She Used to Be Mine” from “Waitress,” “Defying Gravity” from “Wicked,” and many, many more. Visit [www.LRSO.org](http://www.LRSO.org) for a more complete lineup.

Meeken is well known in the Lakes Region as multi-talented singer, actress, dancer, and choreographer. She was voted best actress in a professional production for her role as Velma in the Winnepesaukee Playhouse’s production of “Chicago.” She has starred in several Inter-Lakes Summer Theatre musicals including “Les Misérables,” “A Chorus Line,” and “Evita.” She trained at the Walnut Hill School for the Arts and at the University of Cincinnati’s College-Conservatory of Music where she earned a BFA in Musical Theatre. Her training has created opportunities for her to perform, teach and choreograph worldwide - at the Edinburgh Fringe Festival in Scotland, on PBS with the Cincinnati Pops Orchestra, at the Lincoln Center in New York City, and throughout North-

ern Europe, the Mediterranean, Canada and the Caribbean.

Meeken has been a principal singer and company manager for Jean Ann Ryan Productions. Returning to New Hampshire in 2012, she led the theater program at Tilton School, directing three main-stage productions and teaching acting, voice, and dance to high school students. She is the owner of The Studio at Meredith Bay, a dance studio enriching the lives of local area dance students young and old.

These May 14 and 15 concerts are the capstones of the LRSO’s brilliant 2021-2022 season and sell quickly. Tickets are \$20-\$30 for adults and \$10-\$15 for students college-age and under. Tickets are available online at [www.LRSO.org](http://www.LRSO.org).

If you’ve never experienced a live orchestra performance, we invite you to explore this wonderful concert adventure. If you’re a long-time patron of the LRSO and the performing arts, we look forward to seeing you again!

The LRSO thanks our concert sponsor Bank of New Hampshire, and all our patrons and sponsors, for supporting us this year - keeping orchestral music live and well here in the beautiful Lakes Region of New Hampshire. Join our mailing list at [www.LRSO.org](http://www.LRSO.org) or follow us on Facebook at LRSO1 to receive notice of all our performances next season. Please be sure to tell a friend!

The Lakes Region Symphony Orchestra is a Meredith-based, non-profit orchestra that performs throughout the fall, winter, and spring months.

## Comfort Keepers

### Range of motion – Exercise

BY MARTHA SWATS

Owner/Administrator  
Comfort Keepers

Occupational therapy

Occupational therapy

Occupational therapy is designed to help people regain and build skills that are important for functioning on their own. The occupational therapist will help the person evaluate levels of

function.

An occupational therapist—

- Tests a person’s strength, range of motion, endurance (the ability to continue an activity or effort), and dexterity (skill in using hands) to do everyday tasks that were done easily before an illness or injury happened.

- Designs a program of activities and solutions that ensure the greatest possible independence.

- Provides training to relearn everyday activities of daily living like eating, grooming, dressing, toileting, bathing, and leisure activities such as gardening.

- Decides whether special equipment is needed, such as wheelchairs, feeding devices, transfer equipment, hand and skin devices.

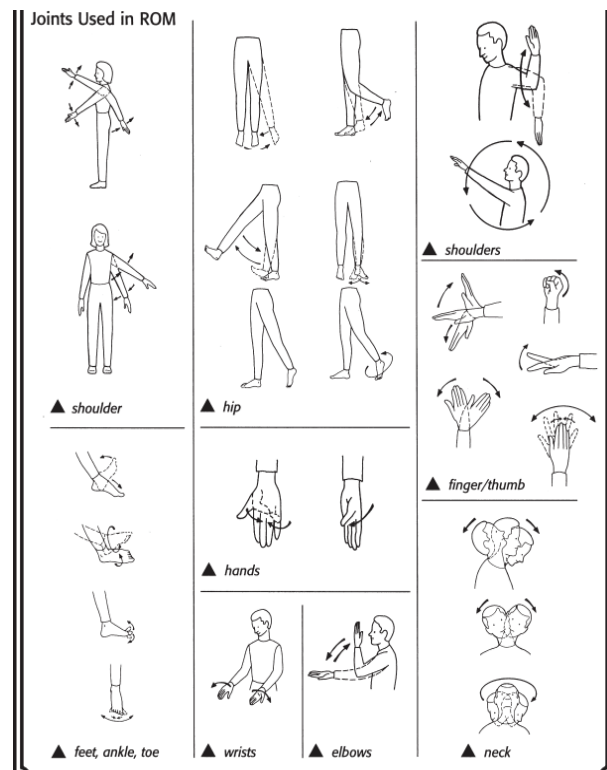
Physical and occupational therapies are part of the process of re-learning how to function after an injury, illness, or period of inactivity.

If muscles are not used, they shorten and tighten, making joint motion painful. For the person in your care, these therapies are key to achieving as much functional independence as possible. Although you may not be asked to assist with these exercises, it is useful for you to know how they help.

The Physical Therapist

A physical therapist treats a person to relieve pain, build up and restore muscle function, and maintain the best possible performance. The therapist does this by using active and passive exercises, massage, heat, water, and electricity. Broadly speaking, a physical therapist:

- Sets the goals of treatment with patient and family
- Shows how to use special equipment
- Instructs in routine daily functions
- Teaches safe ways to



move

- Sets up and teaches an exercise program

Range-of-Motion (ROM) Exercises

The following information is provided for your general knowledge. It IS NOT a substitute for training with professional therapists. Use range-of-motion exercises to relieve pain, maintain normal body alignment, help prevent skin swelling and breakdown, and promote bone formation. A ROM exercise program is ideally started before deformities develop.

Comfort Keepers® can help At Comfort Keepers®,

our professional care team is trained to identify changes in client behavior and report them to the family. For those suffering from Alzheimer’s or dementia, our caregivers can help them remain safe and comfortable at home, while providing everything from laundry and housekeeping to meal preparation and transportation. Learn more about how we can help seniors and other adult clients by contacting your local Comfort Keepers location today.

About Comfort Keepers Comfort Keepers is a leader in providing in-home care consisting of such services as companionship,

transportation, housekeeping, meal preparation, bathing, mobility assistance, nursing services, and a host

of additional items all meant to keep seniors living independently worry free in the comfort of their homes.

Comfort Keepers have been serving New Hampshire residents since 2005. Let us help you stay independent.

Please call 603-536-6060 or visit our Web site at [nhcomfortkeepers.com](http://nhcomfortkeepers.com) for more information.



**WHEELHOUSE KITCHENS**

»»»» Free Design Consultations ««««

Showroom Located inside The FloorWorks

2190 Main St. Bethlehem, NH 03574 • Phone 603-869-5880  
Hours: Mon-Fri: 9-4; Sat: 9-1 • [www.thefloorworks.com](http://www.thefloorworks.com)

Cabinets • Countertops • Kitchen & Bath Design

Email: [info@wheelhousekitchens.com](mailto:info@wheelhousekitchens.com)

**Forest Pump & Filter Co.**

Serving The Greater Lakes Region Area for Over 50 Years

**WE DO IT ALL**

WELL DRILLING PUMP SYSTEMS  
FILTERS

Family Owned Business for 40 Years

CALL FOR SERVICE  
FOREST PUMP & FILTER CO., INC.  
603-332-9037

**Winnisquam Echo**

TO PLACE AN AD:  
ADVERTISING EXECUTIVE  
Tracy Lewis  
(603) 575-9127  
[tracy@salmonpress.news](mailto:tracy@salmonpress.news)

SUBSCRIPTION SERVICES:  
KERRI PETERSON  
(603) 677-9085  
[kerris@salmonpress.news](mailto:kerris@salmonpress.news)

TO PRINT AN OBITUARY:  
E-MAIL: [obituar ies@salmonpress.news](mailto:obituar ies@salmonpress.news)  
CALL: 603-677-9084

TO SUBMIT A LETTER  
TO THE EDITOR:  
E-MAIL: [br endan@salmonpress.news](mailto:br endan@salmonpress.news)

USPS 024-975  
The Winnisquam Echo is published weekly by Salmon Press, P.O. Box 729, 5 Water St., Meredith, NH 03253. Periodicals postage paid at Meredith, NH 03253.  
POSTMASTER:  
Send address changes to the Winnisquam Echo, P.O. Box 729, Meredith, NH 03253.

THE WINNISQUAM ECHO  
PUBLISHED BY  
SALMON PRESS

PRESIDENT & PUBLISHER  
FRANK G. CHILINSKI  
(603) 677-9083  
[frank@salmonpress.news](mailto:frank@salmonpress.news)

BUSINESS MANAGER  
RYAN CORNEAU  
(603) 677-9082  
[ryan@salmonpress.news](mailto:ryan@salmonpress.news)

OPERATIONS DIRECTOR  
JIM DINICOLA  
(508) 764-4325

DISTRIBUTION MANAGER  
JIM HINCKLEY  
(603) 279-4516

MANAGING EDITOR  
BRENDAN BERUBE  
(603) 677-9081  
[br endan@salmonpress.news](mailto:br endan@salmonpress.news)

POSTMASTER:  
Send address changes to the Winnisquam Echo, P.O. Box 729, Meredith, NH 03253.

Carpet • Rugs • Wood • Tile & Stone • Vinyl • Design & Installation • Commercial & Residential

**BAKER VALLEY FLOORS**

34 Route 25, Plymouth, NH 03264 • Phone 603-536-4003  
Hours: Mon-Fri: 8-5; Sat: 9-1 • [www.bakervalleyfloors.com](http://www.bakervalleyfloors.com)

»»»» Now Offering ««««

Cabinets • Countertops • Kitchen & Bath Design

Email: [bvf@bakervalleyfloors.com](mailto:bvf@bakervalleyfloors.com)

**AMBROSE BROS., INC.**  
MEREDITH, N.H.

- Residential Site Work
- Commercial Site Work
- Septic Systems Installed
- Driveway & Road Construction
- Sand - Gravel - Loam

Route 3 • Meredith, NH • 03253  
**279-4444**

# Ice-Out declared on Lake Winnepesaukee

LACONIA — Ice-Out on Lake Winnepesaukee was declared at 5:20 p.m. Friday, April 8. Official Ice-Out on New Hampshire's largest lake is determined from air by Emerson Aviation, and indicates when the M/S Mount Washington can leave her winter dock in Meredith and motor to all four ports on her normal route, in Center Harbor, Alton Bay, Wolfeboro, and Weirs Beach.

a rite of spring in New Hampshire, a sign that the waters are nearly ready for warm weather activities. It also is a sign the M/S Mount Washington will soon begin her season, which runs from May to October.

This year is especially significant, as Ice Out also marks the beginning of the M/S Mount Washington's 150th Anniversary Season. To commemorate the historic ship and this

milestone, Rhythm Craft Cider is launching a new cider that is made using frozen apples, appropriately called Ice Out. Making cider with frozen apples gives the cider a unique flavor profile and is an innovative new addition to Rhythm Craft Cider's selection of hard ciders.

"Our experience with Rhythm Craft Cider is one of a number of collaborations we're working on to bring

New Hampshire-made products to our passengers," said Jared Marao, Mount Washington Cruises Director of Sales and Marketing. "It really exemplifies the potential that businesses have to create new products and tell unique stories when we work together."

For the launch, Rhythm Craft Cider partnered with New England-based artist Kat Maus, owner of Kat Maus Haus Illustration

and Design, to create the label featuring an original image of the M/S Mount Washington. Maus specializes in vintage-style travel posters, and her illustration of the Mount has been commissioned by Mount Washington Cruises to create 150 hand-numbered posters in celebration of the 150th anniversary.

Rhythm Craft Cider's Ice Out cider will be available to passengers

on the M/S Mount Washington this spring.

Visitors to the Lakes Region can experience Lake Winnepesaukee from the water on one of Mount Washington Cruises daily narrated scenic cruises, special dinner cruises, Sunday brunch cruises and special events. For tickets and information, go to [cruisenh.com](http://cruisenh.com) or call Mount Washington Cruises at (888) 843-6686.

Ice Out has become

## Plenty of competition for playing time with softball Raiders

BY JOSHUA SPAULDING  
Sports Editor

BELMONT — With only four returning starters, the Belmont softball team has plenty of competition for playing time in the new season.

"Goals and expectations are to stay healthy and improve every game," said veteran coach Bill Clary, who returns for his 12th season at the helm of the Raiders. "With young players and a short preseason, it

makes game-type decisions difficult to duplicate in a gym.

"We have had limited practice time outside, which does not help in the development of the younger players," Clary continued. "But the girls seem eager to get going with the season."

Returning to the fold for the Raiders are Savannah Perkins, Courtney Burke, Carly Drouin, Abbie Paquette, Lena Rodrigues, Darci Stone, Avery VonKadich and

Rolynn Wilson.

Perkins will be switching to shortstop and will likely also see time in the pitching circle. Burke will move from the outfield to second base, leaving a large hole in the outfield that needs to be filled. Rodrigues will be seeing time at shortstop and behind the plate while Stone will be the team's lone returning player in the outfield this spring.

Clary expects that Drouin, Paquette and

Wilson to compete for time in the outfield while Von Kadich is expected to see time in the outfield and at first base.

New to the team this year are Kate Walker, Madi Paquette, Kenadee Cowger, Riley Cotnoir and Madi Smith.

"We will need some of them to step up early, as we have several holes to fill," Clary stated.

Walker will likely move around the infield, depending on who is pitching and catching.

Cotnoir will likely see time behind the plate, Smith will pitch in with some pitching and work at third base while Cowger and Madi Paquette will be in the outfield.

The Raiders will be returning to a Division III schedule after last year's COVID-related regional schedule and will see two games each with Laconia, Conant and Somersworth and single games against Bishop Brady, Campbell, Newfound, Lebanon, White

Mountains, Raymond, Mascoma, St. Thomas, Winnisquam and Gilford.

The season kicked off after deadline on Tuesday and Wednesday and continues on Monday, April 18, at 4 p.m. at Campbell.

Sports Editor Joshua Spaulding can be reached at 279-4516, ext. 155 or [josh@salmonpress.news](mailto:josh@salmonpress.news).

## Sanbornton resident inducted into Honor Society at Dean College

FRANKLIN, Mass. — Dean College is pleased to announce that Madison Gilbert of Sanbornton has been inducted into the following honor societies for their academic achievements: Phi Eta Sigma.

Founded in 1865, Dean College is a private, residential college located in Franklin Massachusetts, 45 minutes from Boston, Massachusetts, and Providence, Rhode Island. Dean College offers baccalaureate degrees, associate degree programs, as well as a robust schedule of part-time continuing and professional education credit and certificate programs throughout the calendar year.

### BELMONT POLICE LOG

BELMONT — The Belmont Police Department reported the following arrests during the week of March 28 to April 4.

Marcy L. Wells, age 52, of Goffstown was arrested on March 30 for Conduct After an Accident.

Velvet Elaine Weeks, age 51, of Plymouth was arrested on March 30 for Criminal Trespassing and Carrying or Selling Weapons.

Michael J. Carter, age 34, of Gilford was arrested on March 30 for Criminal Trespassing and in connection with multiple bench warrants.

Brandy S. Tuttle, age 33, of Belmont was arrested on March 31 in connection with multiple bench warrants.

Joshua A. Rheume, age 33, of Belmont was arrested on March 31 for DUI-Impairment.

Richard Thomas Lennon, age 22, of Belmont was arrested on April 1 for Suspension of Vehicle Registration and Driving After Revocation or Suspension.

Jesse James Tarr, age 29, of Laconia was arrested on April 1 in connection with a warrant.

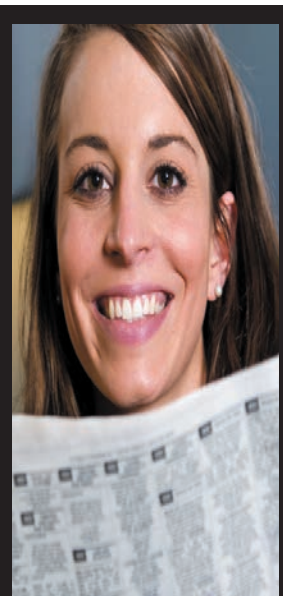
R'Jaye M. Ladd, age 21, of Belmont was arrested on April 1 in connection with multiple bench warrants.

Matthew R. Greenwood, age 38, of Belmont was arrested on April 1 in connection with multiple bench warrants.

Ashley Huckins, age 34, of Belmont was arrested on April 2 for Theft By Unauthorized Taking of an amount greater than \$1,500.

Otto B. Keller, age 38, of Moultonborough was arrested on April 2 for Possession of a Controlled Drug.

Adam J. Cordano, age 39, of Tilton was arrested on April 3 in connection with multiple warrants.




**ADVERTISING WORKS.**

Call  
**1-877-766-6891**

[salmonpress.com](http://salmonpress.com)

Wonderful Things Come In Small Packages...



Old Man Pendant from \$35

especially if they're from  
**Alan F. Soule Jewelers**  
286-8649  
422 W. Main St. Tilton, NH  
(across from Winnisquam HS)

Gold • Sterling • Diamonds  
Colored Stones • Repairs  
Custom & Handcrafted Items  
Wedding & Family Jewelry



**Comfort Keepers**  
Elevating the Human Spirit

**A daily dose of joy**  
Uplifting in-home senior care

- Personal care
- Companionship and housekeeping
- Dementia and Alzheimer's care
- Respite care
- Private duty nursing
- SafetyChoice®

**(603) 536-6060**  
[NHComfortKeepers.com](http://NHComfortKeepers.com)

© 2022 CK Franchising, Inc. An international network, where most offices are independently owned and operated. 0222

[salmonpress.com](http://salmonpress.com)

**Staying Strong Together!**

Pemi River Fuels continues to be on the road supporting Our customers and community in this time of uncertainty.



**\*Oil\*Propane\*Kero\*Off Road\***  
Home Delivery

**\*Gas\*Diesel\*Off Road\*Kero\***  
At Our Pumps

24/7 Service • Competitive & Lock-in Price Programs  
No Hidden Fees • New Customer Specials

**Local & Reliable**  
the fuels you need by the people you know

612 Tenney Mountain Highway Plymouth, NH  
(603) 536-2738  
[www.pemiriverfuels.com](http://www.pemiriverfuels.com)



**SCHWARTZBERG LAW**  
EXPERIENCE THAT MATTERS

Advising clients about  
**Wills and Trusts since 1985.**



Ora Schwartzberg, Esq.

572 Tenney Mountain Hwy, Plymouth, NH 03264  
**603-536-2700 | [WWW.NHLAWYER.NET](http://WWW.NHLAWYER.NET)**

## Legends of spring

The first day of spring just passed us by on March 20. Now that we are over the hump and into the rainy/muddy season, we thought we would share some fun myths surrounding this blooming time of year.

The first story begins with Persephone and Demeter. Persephone was the goddess of spring and holds the most well known story of the season to date. Persephone is the daughter of Demeter, the goddess of agriculture and Zeus, the king of the gods. Persephone married Hades who kept her hidden against her will. Demeter set off to find her daughter and for every minute she was lost, not a crop would grow. Zeus then ordered his daughter to remain in the underworld for half of the year because she ate all of the fruit (pomegranate seeds), the other half of the year she spent with her mother. The idea is that every time Persephone goes into the underworld, winter arrives and the crops die, when she is with her mother, crops bloom.

According to Cherokee legend, the reason trees lose their leaves in the fall is because of the communication between animals and humans. Apparently, animals were able to communicate with humans and the world was utopian. Every year the birds would fly south for the winter. During one particular year, a Sparrow who was injured was not able to fly south, he sent his flock ahead without him so the would not freeze, meanwhile he sought shelter. The bird flew to an old Oak tree and was told that he could not seek shelter in its branches, the same thing happened with every tree the bird visited until he was finally granted permission to stay in a pine tree. The pine tree, not popular with the others because of its hard, sharp leaves welcomed the little bird. The Sparrow was forever grateful.

The Sparrow survived the winter and welcomed his family home during the warmer months. Because the other trees, turned on the Sparrow during a most vulnerable time, the creator cursed their leaves to die during the winter except for the pine tree.

The Shinto Sun Goddess and Bringer of Light, Amaterasu, according to legend, is in control of the sun's movement to insure rice and other crops will grow. This goddess is well known for her ability to spin satin. Her fame caused her brother Susanoo, the god of storms, to become extremely jealous. The angry deity destroyed his sister's weaving loom and wrecked her rice fields. The rampage caused one of Amaterasu's closest friends to parish, as a result she locked herself inside a mountain resulting in the disappearance of light. Because of this, crops would not grow. Uzme, the goddess of laughter traveled to the mountain where Amaterasu was hiding. She placed a shiny necklace on a tree, then began to dance causing the other gods to laugh. When Amaterasu heard the laughter she peeked out of her cave and slowly began to walk towards the necklace. At this, Uzme had the cave blocked and light was restored to the world.

Some actual facts concerning the spring season are as follows; in 1582, if Pope Gregory XIII would not have established the Gregorian calendar, then every 128 years the vernal equinox would have come a full calendar day earlier, which would put Easter in the middle of winter.

The famous myth about being able to balance an egg on its end on the spring equinox is not true. Attempting to balance an egg on its end is no easier on the spring equinox than on any other day.

During the springtime, birds are louder as they sing to attract mates and to warn enemies to steer clear.

The term "spring fever" refers to the psychological and physiological symptoms that go along with the arrival of spring, which include, daydreaming and restlessness. Over the years, scientists surmise the cause in the hormone shift could be due to the increase in sunlight and increased physical activity.

## Send your letters!

Winnisquam Echo  
P.O. Box 729  
Meredith, NH, 03253

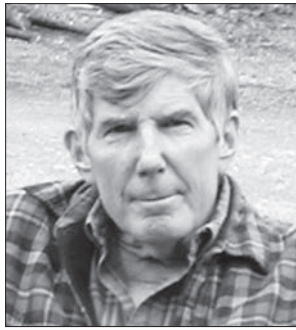
Our fax number is 279-3331.

Or, you can e-mail us at [echo@salmonpress.news](mailto:echo@salmonpress.news)

Please include your name, address and phone number.

North Country Notebook

## Foxes, coyotes, weasels, wolves: In my mind, they all run together



By JOHN HARRIGAN  
COLUMNIST

"But in cutthroat Washington fashion, he saw weakness and took advantage. Now he rests and plays uninhibited at the seat of power." --Carol E. Lee, in the April 17, 2014 Wall Street Journal.

This is the beginning of a story on a red fox that showed up on the White House grounds in the spring of 2014--and stayed. Barak Obama, among others, saw it cavorting around. A rare photograph showed the fox trotting along, fountains in the background.

But last week's story, in the New York Times and other papers, was different. It was, after all, eight years later. The story now was that the resident fox had been acting strangely,



Weasels Killing Chickens is Common, but Preventable

This is the advisory that a Midwest journal ran with a story on why weasels succumb to what keepers of chickens call blood-lust killing. (Courtesy Countryside & Small Stock Journal)



COURTESY

To paraphrase a movie quote, build a habitat and a fox will come. The White House grounds, with an abundance of food (squirrels, etc.) and an absence of competing predators, proved ideal for a red fox. (Courtesy Getty Images, the Wall Street Journal)

and had nipped at several people and bitten at least nine. It was suspected of being rabid.

It was captured after a good deal of trouble, and animal control officers euthanized it. So too were its pups from its den. Brain tissue affords the only reliable test for rabies.

Questions remain. Was it the same fox? Foxes can live three or four years in the wild. This one was seen by President Obama and lived through the Trump administration to Joe Biden's first term.

And how did the current resident fox get rabies? Well, all manner of wild and domestic animals can carry rabies. It's a long list, from skunks to raccoons.

Staffers cornered the fox in a bunch of



A ca. 1800s illustration of the extinct Japanese wolf, thought to be the most likely link to today's family dog. (Carl Hubert de Villeneuve, courtesy Wikimedia Commons)

shrubbery around some big rocks and used a long-handled net to capture it. It was in the wrong place, at the wrong time, and had to go.

+++++

There is no shortage of red foxes, nationally or in New Hampshire. How we treat them, however, is dreadful, and a shameless stain on what passes for society. And yes, I've lost chickens to foxes--"my bad," as the kids say, because I failed

to provide an effective coop.

If there is a convenient time for a red fox to be put down, early springtime is it, especially a lactating mother with kits. There are enough connecting green spaces--cemeteries, parks, golf courses, conservation areas, and such--to provide a path to the White House, and it was only a matter of time until a fox showed

SEE NOTEBOOK, PAGE A6

## LETTERS TO THE EDITOR

### Legislative update

To the Editor:

It was a pretty slow week. We met for a full session to take action on bills that had gone to second committees or were slow coming out of a committee. Several were of some consequence and importance and others were relatively mundane. There were a couple of House Resolutions, HR15 and 17 that while interesting have no real purpose other than expressing what the house believes. Resolutions have no effect of law. HR 15 was condemning The Communist part of China. Great thought but I would think this is obvious. Another, HR 17, said we oppose all efforts by the state or federal government to impose a carbon tax on fuels or electricity or transportation. I oppose any kind of carbon tax.

A very partisan pair of bills, HR 1093 & HR 1666, wanted to issue driver's licenses to illegal aliens. Now, what could go wrong there? Would this mean more Democratic voters? Asking the State DMV to look the other way when somebody says "I'm here illegally" but you can't report me to the immigration folks. These both failed.

One that I supported but did fail was electing the Attorney General by the Legislature like we do the Secretary of State. It was CACR 24, a Constitutional Amendment Concurrent Resolution. Currently the decision is made by four people, the governor and three of the five Executive Councilors. Recently one AG became a Supreme Court Chief Justice with no trial experience. His claim to fame... he was a friend of the Governor. CACR 27 would allow you to decide by petition and a vote by registered voters to recall or remove any State court judge. It failed. Specifically

in Family Court we hear stories about questionable judicial conduct. Today, except for two cases on impeachment, we've never removed a judge. We must have an awesome bunch of judges!

We did vote to pass HB 1471, which will reimburse 7.5 percent of the local employee's pension contribution. The State used to pay 35 percent, but found that there was no way to control how many employees municipalities hire and the resulting expense to the state was unpredictable. As a private employee, I did not have a sugar daddy for my pension and that pension disappeared and I was left with an enhanced 401K in which I could choose to invest or not. The State offers defined benefit plans (where you get a certain amount based on your years service), mine was a defined investment and served me well. I fear we will regret this vote as it will add more to the budget.

The marijuana bill HB 1598 returned from the Finance as Ought to Pass and will now go to the Senate where they have terminated similar bills in the past. This bill establishes government sales in the Liquor Stores and a bank to process the illegal earnings. A large bureaucracy is created, in many cases, for the same people who despise large government. They must be smoking too much weed.

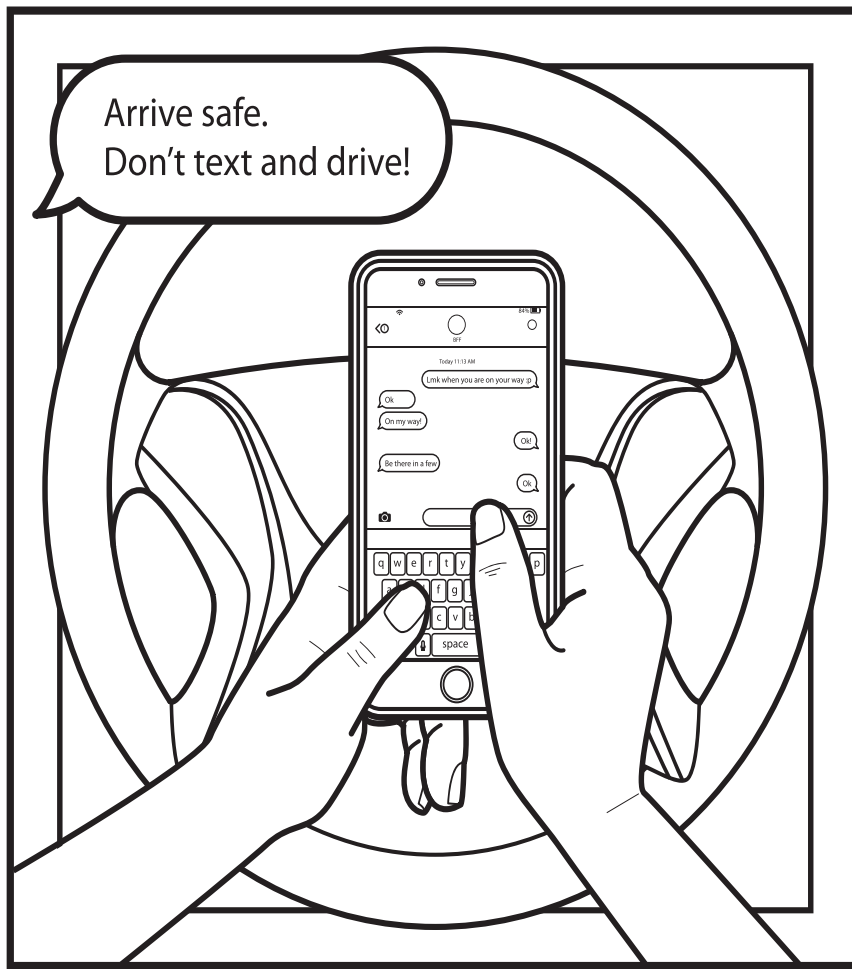
That's my report. Two committee meetings next week to start hearing on Senate referred bills. Give me a call at (603) 320-9524 or email at [dave@sanborn-hall.net](mailto:dave@sanborn-hall.net) if you want to talk or have a cup of coffee.

Cheers!

Rep. Dave Testerman  
Franklin

## Creative Coloring

Celebrate Distracted Driving Awareness Month. Color in this picture to create your own masterpiece.



### THIS DAY IN...



## HISTORY

- **1111:** HENRY V OF GERMANY IS CROWNED HOLY ROMAN EMPEROR.
- **1870:** THE METROPOLITAN MUSEUM OF ART IN NEW YORK CITY IS FOUNDED.
- **1997:** TIGER WOODS BECOMES THE YOUNGEST GOLFER TO WIN THE MASTERS.

## New Word

**CAUTION**  
care taken to avoid danger or mistakes



### HEALTH FACT!

IN 1958, THIS THREE-POINT DEVICE WAS INVENTED BY NILS BOHLIN. IT HELPED TO MAKE DRIVING EVEN SAFER FROM EARLIER VERSIONS.

ANSWER: SEAT BELT

### How they SAY that in...

**ENGLISH:** Road  
**SPANISH:** Carretera  
**ITALIAN:** Strada  
**FRENCH:** Route  
**GERMAN:** Straße

### Did you KNOW?

DRIVERS SHOULD BE MINDFUL OF ALL RULES OF THE ROAD AND OBEY TRAFFIC SAFETY OFFICERS.

### GET THE PICTURE?

Can you guess what the bigger picture is?

ANSWER: STEERING WHEEL

### CRYPTO FUN

Determine the code to reveal the answer!

Solve the code to discover words related to lawn care. Each number corresponds to a letter. (Hint: 1 = E)

**A. 20 6 18 1 16**  
Clue: Cuts grass

**B. 18 1 1 23 15**  
Clue: Unwanted plants

**C. 21 1 16 10 26 11 26 7 1**  
Clue: Feed greenery

**D. 11 3 4 23 15 12 3 24 1**  
Clue: Visual features of a yard

Answers: A. mower B. weeds C. fertilize D. landscape

### SUDOKU

	9	5						
1			9					6
	8						3	
	6	4						2
8			2	8		5		
			6	7		3		5
	1						2	
		6	5	2				1

Level: Intermediate

**Fun By The Numbers**

Like puzzles? Then you'll love sudoku. This mind-bending puzzle will have you hooked from the moment you square off, so sharpen your pencil and put your sudoku savvy to the test!

**Here's How It Works:** Sudoku puzzles are formatted as a 9x9 grid, broken down into nine 3x3 boxes. To solve a sudoku, the numbers 1 through 9 must fill each row, column and box. Each number can appear only once in each row, column and box. You can figure out the order in which the numbers will appear by using the numeric clues already provided in the boxes. The more numbers you name, the easier it gets to solve the puzzle!

3	7	6	5	2	9	4	8	1
5	1	9	8	6	3	4	2	7
4	2	8	7	1	3	9	5	6
8	5	2	1	4	7	9	6	3
9	3	1	2	6	8	7	5	4
7	6	4	3	9	5	8	1	2
2	8	7	4	5	6	1	3	9
1	4	3	9	8	2	5	7	6
6	9	7	1	3	2	4	8	

ANSWER:

### Stone Wall Repair

Fieldstone/Granite  
35 years experience

**Tony Luongo**  
707-2727

Serving all of New Hampshire for 50 years.

## PORTER

ASPHALT PAVING, INC.

286-8182  
www.porterpaving.com

Paving & Resurfacing • Driveways & Parking Lots • Line Striping  
Specializing in Residential and Commercial Paving  
Owner Installs Every Job

### Edward Jones: Financial Focus

Will your money last as long as you do?

We all hope for long, healthy lives. But there's a serious "side effect" of longevity – the possibility of outliving our money. How can you help prevent this? It's useful to know the seriousness of the threat. Consider this: About 41% of all U.S. homes in which the head of the household is between 35 and 64 are projected to run short of money in retirement, according to the Employee Benefit Research Institute.

While this statistic indicates a cause for concern, it certainly doesn't mean that you are necessarily headed for trouble – because there's a lot you can do to help build and manage enough resources to last a lifetime. Here are a few suggestions:

- **Consider your estimated longevity.** On average, a 65-year-old man can expect to live another 17 years, while a 65-year-old woman can anticipate about 20 years, according to the Centers for Disease Control. Of course, you'll want to take into account your health and family history of longevity to arrive at a reasonable estimate. You can then use this figure to help determine how much money you'll eventually need. To play it safe, you might even want to try to build an income stream that can last beyond your estimated lifespan, possibly up to age 90.
- **Don't overlook health care costs.** When budgeting for retirement, allow enough for your health care expenses, which can be considerable. Even with Medicare, you can expect to spend anywhere from \$4,500 to \$6,500 per year, per person, for traditional medical costs. Also, you may want to prepare for two to three years of long-term care expenses, which currently range from about \$50,000 per year for home health care to over \$100,000 per year for a private room in a nursing home.
- **Keep building assets for retirement.** While you're working, consistently try to put away as much money as possible for your retirement years. Each year your salary goes up, increase your contributions to your 401(k) or similar employer-sponsored retirement plan. You may also want to contribute to an IRA, depending on your goals. And within your retirement savings, make sure you devote a reasonable percentage of your investment dollars to growth-oriented vehicles that align with your goals and risk tolerance.
- **Seek out sources of guaranteed income.** As a retiree, you will receive Social Security benefits – and the longer you wait before claiming them, the bigger your monthly checks will be. But you might also consider investments that can provide a source of income you can't outlive, such as annuities.
- **Revisit your strategy before you retire.** As you near retirement, you may want to review your investment strategy, possibly adjusting your risk level so that your portfolio would be somewhat less susceptible to market volatility. This is also a good time to review your spending needs in retirement.
- **Maintain a reasonable withdrawal rate.** Once you are retired, you'll likely need to start withdrawing from your 401(k), IRA and other investment accounts. To avoid taking out too much money too early in your retirement, you'll need to set a reasonable, sustainable withdrawal rate based on your assets, age and retirement lifestyle. A financial advisor can help you determine an appropriate rate.

It will take dedication and determination to help ensure your money doesn't run out during your lifetime. But you'd probably agree that it's well worth the effort.

**Jacqueline Taylor**  
Financial Advisor  
3 Mill Street  
PO Box 176  
Meriden NH 03253  
603-279-3161  
Fax 866-532-8685  
jacqueline.taylor@edwardjones.com

## PEABODY

CONTINUED FROM PAGE A1  
room and easy access to downtown Franklin.

"This home may be new but it's a continuation of the work of many generations," said Chris Seufert, who chairs the Peabody Place Board of Directors. "We would not be here today without the great work of our contractors, engineers and architects or without the many city officials and others who had a vision. It does take a village and a village can make a dream become a reality. You all dreamed big, and it is exciting to welcome residents into the new living space."

Over 50 special guests attended the ribbon cut-

ting ceremony on the afternoon of March 31 and enjoyed the remarks, a champagne toast, first-finished tours of the finished space and a sampling of the high-quality cuisine that is available to Peabody Place members. The following Saturday, dozens of volunteers helped move the current members living in the old building a few hundred yards into their new homes.

Franklin Mayor Jo Brown recalled old memories of playing the grand piano with her grandmother in the old building and on how the new Peabody Place embraces a forward of senior care.

"I want to thank Ex-

ecutive Director Howie Chandler for moving the focus away from a nursing-focused medical facility and towards a whole person inclusive community of people that are coming in. The Peabody team is at the forefront on this," she said.

The first phase of the project is now completed and is dedicated to individuals interested in an assisted living environment. Upon completion of phase two, the 63,632 square foot Peabody Place will more than double its original capacity and will include 45 assisted living apartments, 13 memory care apartments and 16 independent living apartments.

## VILLAGE

CONTINUED FROM PAGE A1  
County History Museum in Canton, Ga.

The Abbey Museum, a Smithsonian affiliate in Bar Harbor Maine, held one of the first Contemporary Native American Artist Exhibitions called "Twisted Path (Walking in Two

Funding totaling \$26 million was approved through the United States Department of Agriculture's (USDA) Rural Development's Community Facilities Direct Loan & Grant Program in November 2020.

"New Hampshire and Vermont have two of the highest median ages," said Eric Law, rural development community program director for the New Hampshire/Vermont region of the USDA. "Our communities need quality, affordable elderly care and Peabody Place is a prime example of that. On behalf of USDA Secretary Vilsack, I want to congratulate you all. From

your USDA, a sincere congratulations."

The building was designed and built by EGA P.C. Engelberth Construction and the engineering work is being conducted by Nobis Engineering, both of Concord. Advisory work is being provided by New Hampshire-based RS Consulting and North Country and the Northern Community Investment Corporation, in St. Johnsbury, Vt.

Engelberth CEO Pierre Leblanc was also on hand for the ribbon cutting. "We built this new building through the pandemic and I'm so proud of everyone here. Our team and the many subcontractors that

worked with us faced challenges, labor shortages and more to get to this point. It was pretty incredible to see everyone persevere. Now we're going to go to locker room and regroup and kick the next phase into gear," he said.

The original building will be torn down in mid-April to make room for phase two. This will include constructing a new independent living facility on that location. Both phases are being integrated into a single three-story building that features a granite and brick façade and large manor windows. Phase two is expected to be completed in late 2022.

## SOFTBALL

CONTINUED FROM PAGE A1

"We will be looking for this group to have a big impact this year," Dawalga said. "We know it will take time, but watching them in practice, they work hard every day and want to learn as fast as they can, which is a big key for them and our team going forward."

"Staying patient while they gain varsity experience is a key for me," he added.

The Bears will be returning to a traditional Division III schedule after last year's COVID-altered regional schedule. They will play two games each with Newfound and St. Thomas and single

games against Lebanon, Franklin, Berlin, Bishop Brady, Prospect Mountain, Gilford, Inter-Lakes, White Mountains, Belmont, Monadnock and Kearsarge.

The season kicked off after deadline with games against Lebanon and Franklin and continues on Saturday, April 16, at Odell Park in Franklin against Newfound at 6 p.m. They will be at Berlin on Monday, April 18, at 4 p.m. and will be at Bishop Brady on Wednesday, April 20, at 4 p.m.

Sports Editor Joshua Spaulding can be reached at 279-4516, ext. 155 or josh@salmonpress.news.

## BASEBALL

CONTINUED FROM PAGE A1

playing a pair of games each with Laconia and Somersworth and single games with Bishop Brady, Kearsarge, Campbell, Inter-Lakes, Newfound, Prospect Mountain, White Mountains, Conant, Raymond, Mascoma, Winnisquam and Gilford.

The season officially got under way after

deadline Monday and Wednesday and continues on Friday, April 15, at home against Kearsarge at 4 p.m., will be at Campbell on Monday, April 18, at 4 p.m., at Inter-Lakes on Wednesday, April 20, at 4:30 p.m.

Sports Editor Joshua Spaulding can be reached at 279-4516, ext. 155 or josh@salmonpress.news.

## NOTEBOOK

CONTINUED FROM PAGE A4

up.

And wouldn't that have been something, cute fox kits cavorting around on the White House lawn? It would have been a media sensation.

And we can't have that kind of thing with an opportunistic predator, can we?

+++++

In Japan, one of four extinct species of wolves has been making news because it may, in its obscurity, offer the most direct evidence of the evolution of the dog.

They are all dogs, after all--domestic dogs and dogs of the wild, including jackals and today's persecuted coyotes, as well as that photogenic family of foxes in that side-hill just down the road. We just call them by different names.

The Japan wolf-dog story drew people steeped in wolf history, wolves lost in the mists of time. The fate of two Siberian wolf populations (unto Tibet and China, et al) is unknown.

"Wolves are the key to understanding dogs," commented Laurent Frantz, evolutionary geneticist at the Ludwig Maximilian University of Munich.

Worlds)" and have one of the largest and most intricate of Novak's sculptural webs in their permanent collection.

Cost for this "Dreamcatcher" workshop is \$40, \$25 for Village members. All materials are provided and all proceeds will benefit Can-

terbury Shaker Village. Register at www.shakers.org.

The Village is a member of the NH Heritage Museum Trail, which connects the public with culturally rich heritage institutions in New Hampshire. For more in-

formation, visit nhmuseumtrail.org.

Canterbury Shaker is located at 288 Shaker Rd. in Canterbury, just south of Laconia and north of Concord. For more information, visit www.shakers.org.

One of my conclusions from all this is that minks have way better press agents than weasels. Weasels are far more infamous than famous, mostly for sucking eggs dry or sucking the blood out of chickens (they don't have the jaw muscles for either, although they can lap at blood). Minks seem known mostly for cleaning out fish hatcheries (otters equally so) and becoming coats and stoles.

Weasels have their defenders, including some lawyers, who themselves are among the several species often accused of using weasel-words, with apologies to the weasels. Others include lawmakers, some fishermen (I once accused Congressman Louis Wyman of this, after his alleged trip to Perry Ponds), some judges, some government bureaucrats, and members of the Fish and Game Commission (not to be confused with the actual Department).

In defense of weasels succumbing to bloodlust killing, a.k.a. frenzy, and killing every chicken in sight, which they do with two quick bites to the neck, and then dragging the dead birds to corners of the coop, the experts tend to quote Ma Barker, mother of the infamous Barker Gang of the 1930s: "Lies, lies, they's all tellin' lies about my boys." c

The experts say the weasels do it because they think they're going to come back to eat their fill (and more), and because all that flapping and squawking makes them go berserk (who can blame the chickens?); and because they

are hot-wired to kill whatever whenever they can.

Post-chickens, I've had the welcome mat out for weasels. When I had my last cat, a skilled killer of rodents and all manner of moles and voles and other creatures, some quite large, I never noticed a weasel because there weren't any, out of fear of the cat.

Post-cat, I've somehow known when weasels were around. I can sense them through the absence of mice, and other things I notice because I'm always looking at the ground, and always have. Tiny tracks in sand or loose dirt or snow, for instance. I can somehow feel a weasel out there, somewhere. "Hmm," I'll say, peering down. "What made those tiny little tracks?" (answer: a weasel).

Currently, I'd guess that I have a weasel, or it has me. My trap-line, set up in an endless procession of barns and sheds and the shop and working steadily toward the warmth and comfort of the house, hasn't been necessary at all. And once in a while, I've seen a weasel pop its head up in a woodpile.

Cute as the dickens, I think, as long as I'm not keeping chickens.

(This column is syndicated in newspapers from Concord to Canada. Please address mail, including phone numbers for questions, to campguyhooligan@gmail.com or 386 South Hill Rd., Colebrook, NH 03576.)

Lakes Region Chimney Pro

Sweeps • Stonework  
Brick Repairs • Liners  
Caps • Installations  
Fire Place Makeovers

CERTIFIED CHIMNEY SWEEP

Video Chimney Inspections

603-520-7217

Fully Insured

## PETS OF THE WEEK

## Coco

Looking for a fun, outgoing pup to keep you on your toes? Coco is your girl! This silly, active girl is the life of the party you never knew you needed. She's social and spunky, with the energy and smarts to back it up! Due to a few insecurities, Coco is in our behavior program. Check out what she's working on below!

Coco's strengths: smart, social, and motivated by food and toys, this little pup has a lot going for her!

What needs some improvement: Coco can be nervous about her resources being taken from her such as food and toys. We have been working to teach her that people approaching her food bowl and other high value items means that good things happen and we aren't there to take her stuff away. So far, she is making great progress!

What Coco is working on: Coco is learning that she does not have to fear her resources being taken from her. She can also get a little uncomfortable with restraint, so she is working on building positive associations with handling.

What Coco needs in an adopter: Coco is looking for someone who is patient and has lots of love to give! She's a really sweet girl that needs to be shown that her fears in life aren't so scary after all. Through an adopter willing to continue down the path of positive experiences and training, Coco will grow up to be a lovely dog!

Adoption information-

Kids: no kiddos

Cats: no feline friends

Dogs: Coco may do well on some supervised doggie playdates, but is not ready to go home with another dog due to her insecurity around food and toys.



Lina

Miss Lina. She is an adorable little cat looking for a quiet home where she can learn to trust and accept attention from her human friends. She might benefit from having another cat to help her warm up, but with the right patient human she should flourish.

NH Humane Society  
Over a century of love for those without a voice.

1305 Meredith Center Rd Laconia, NH 03246 • (603) 524-9539

NORTH COUNTRY COINS, LLC  
BUYING • SELLING • APPRAISALS  
Est. 1989  
WWW.NCCNH.COM  
TUES - FRI 10-5 • SAT 10-3

HIGHEST PRICES PAID  
All US and foreign silver and gold coins, estate jewelry, scrap gold, diamonds. Free oral appraisals.  
NORTH COUNTRY COINS.  
Main St., Plymouth, NH 536-2625.

# HIGH SCHOOL SLATE

**Thursday, April 14**  
**GILFORD**  
 Boys' Lacrosse at Kearsarge; 4  
 Girls' Tennis vs. Prospect Mountain; 4  
**Friday, April 15**  
**BELMONT**  
 Baseball vs. Kearsarge; 4  
 Girls' Lacrosse at Bow; 4  
**GILFORD**  
 Baseball at White Mountains; 4  
 Boys' Tennis vs. Littleton; 4  
 Girls' Lacrosse vs. Campbell; 4  
 Softball at White Mountains; 4  
**Saturday, April 16**  
**WINNISQUAM**  
 Baseball vs. Newfound (Robbie Mills); 4

Softball vs. Newfound (Odell Park); 6  
 Track at Newfound; 10  
**Monday, April 18**  
**BELMONT**  
 Baseball at Campbell; 4  
 Girls' Lacrosse vs. Campbell; 4  
 Softball at Campbell; 4  
**GILFORD**  
 Boys' Lacrosse at Hillsboro-Deering; 4  
 Girls' Lacrosse at Trinity; 4  
 Girls' Tennis at Profile; 4  
 Softball vs. Laconia; 4  
**WINNISQUAM**  
 Baseball at Berlin; 4  
 Softball at Berlin; 4

**Tuesday, April 19**  
**BELMONT**  
 Track at Winnisquam; 4  
**GILFORD**  
 Boys' Tennis vs. Bishop Brady; 4  
 Girls' Lacrosse at Plymouth; 4  
 Track Home Meet; 4  
**WINNISQUAM**  
 Track Home Meet; 4  
**Wednesday, April 20**  
**BELMONT**  
 Baseball at Inter-Lakes; 4:30  
**GILFORD**  
 Baseball vs. Mascoma; 4  
 Boys' Lacrosse at Campbell; 4

Boys' Tennis at Prospect Mountain; 4  
 Girls' Lacrosse vs. Hopkinton; 4  
 Girls' Tennis at Kearsarge; 4  
 Softball vs. Mascoma; 4  
**WINNISQUAM**  
 Baseball at Bishop Brady; 4  
 Softball at Bishop Brady; 4  
**Thursday, April 21**  
**BELMONT**  
 Girls' Lacrosse vs. Laconia; 4  
**GILFORD**  
 Girls' Lacrosse vs. Bishop Brady; 4

*All schedules are subject to change.*



# REAL ESTATE

**MEREDITH OFFICE**  
 97 Daniel Webster Hwy  
 (603) 279-7046

**LACONIA OFFICE**  
 1921 Parade Road  
 (603) 528-0088

**SEARCH NH REAL ESTATE: WWW.ROCHEREALTY.COM**

\$242,000  
 MLS# 4903529

\$225,000  
 MLS# 4903320

\$299,900  
 MLS# 4903962

\$385,900  
 MLS# 4904039

Just listed in Westgate Village! A 1,102 sf Waterfront fun at Misty Harbor! This condo garden style condo featuring 2-beds, 2 is not currently in the rental pool and is full baths, & a private covered porch for ready for you to start making memories. New to the market, find this private wooded setting high on a knoll in New Hampton right off Rt 104. Easy access to I-93 for commuters, skiers, hikers, & multiple lakes nearby, including beach rights of its own within walking distance. Gunstock Acres shared private beach rights on Lake Winnepesaukee comes with this very well-kept 3 bed, 2 full bath Chalet sitting on .64 of an acre. The main level has a cathedral wood ceiling, laminate floors, and 2 sliders.

*Voted #1 Real Estate Company in NH's Lakes Region, 2019, 2020 & 2021 & Best Commercial Real Estate Company 2020 & 2021! Since 1997 Roche Realty Group has sold more than \$2.63 billion of New Hampshire's properties involving 8,634 transaction sides and has ranked in the top 10 real estate firms in New Hampshire out of 2,400 firms statewide.* \* Statistics obtained from NEREN for the past 24 years since 1997 for all real estate firms reporting sales in the entire state of NH during that time.



**Equal Housing Opportunity**

*All real estate advertising in this newspaper is subject to The Federal Fair Housing Law which makes it illegal to make, print, or published any notice, statement, or advertisement, with respect to the sale, or rental of a dwelling that indicates any preference, limitation, or discrimination based on race, color, religion, sex, handicap, familial status or national origin, or an intention to make any such preference, limitation or discrimination.*  
 (The Fair Housing Act of 1968 at 42 U.S.C. 3604(c))  
 This paper will not knowingly accept any advertising which is in violation of the law. Our readers are hereby informed, that all dwellings advertised in this newspaper are available on an equal opportunity basis.  
 To complain of discrimination call HUD toll free at 1-800-669-9777  
 For The Washington DC area, please call HUD at 275-9200. The toll free telephone number for the hearing impaired is 1-800-927-9275.  
 You may also call The New Hampshire Commission for Human Rights at 603-271-2767 or write The Commission at 163 Loudon Road, Concord, NH 03301  
 Neither the Publisher nor the advertiser will be liable for misinformation, typographical errors, etc. herein contained. The Publisher reserves the right to refuse any advertising.

EQUAL HOUSING OPPORTUNITY

**55 Plus MODEL HOME OPEN SUNDAY 12 to 2**

**\$169,995 Come and take a look!**  
 Garage, Porch, Appliances  
 \*10% down - 25 years at 6%  
**Call Kevin - 603-387-7463**  
 Mansfield Woods, 88 North, Rt. 132, New Hampton, NH  
 Directions: Rt. 93, exit #23. Right for 1/2 miles, left at post office for 800'

**Camelot HomeCenter**  
 ALWAYS OPEN DAILY • 10 TO 6 SATURDAYS & 10 TO 5 SUNDAYS

**Save \$10,000 On Select Lot Models**

<b>NEW 14 WIDES</b> \$63,995 56' 2 Bed	<b>Homes From COLONY, NEW ERA, &amp; TITAN</b> \$71,995 66' 2 Bed, 2 Bath
<b>DBL WIDES</b> \$89,995 64' 2 Bed, 2 Bath	<b>DBL WIDES</b> \$109,995 40' 3 Bed, 2 Bath
<b>DBL WIDES</b> \$124,995 48' 3 Bed, 2 Bath	<b>DBL WIDES</b> \$118,995 48' 3 Bed, 2 Bath
<b>MODULARS</b> \$134,995 3 Bedroom (Base Price)	<b>MODULARS</b> \$141,995 2 Bedroom
<b>MODULARS</b> \$191,995 1,900 sq. ft. 2 Story 1st Floor Master Bedroom	

**BUY NOW WHILE PRICES ARE LOW!**  
 WE HAVE DELIVERED OVER 10,000 HOMES TO SATISFIED CUSTOMERS. CAN WE DELIVER ONE TO YOU?  
 Rt. 3, Tilton NH, exit 20 on Rt. I-93 across from Lakes Region Factory Mall WWW.CM-H.COM

**TO VIEW THESE AND OTHER PROPERTIES, VISIT:**

- Alpine Lakes Real Estate: [www.alpinelakes.com](http://www.alpinelakes.com)
- Bean Group: [www.beangroup.com](http://www.beangroup.com)
- Century 21 Country Lakes Realty: [www.countrylakesrealty.com](http://www.countrylakesrealty.com)
- Century 21 Twin Rivers Realty: [www.nhreal21.com](http://www.nhreal21.com)
- Coldwell Banker: [www.cboldmill.com](http://www.cboldmill.com)
- Coldwell Banker Residential Brokerage: [www.newenglandmoves.com](http://www.newenglandmoves.com)
- ERA Masiello: [www.masiello.com](http://www.masiello.com)
- Exit Lakeside Realty Group: [www.exitlakeside.com](http://www.exitlakeside.com)
- Granite Group Realty Services: [www.granitegrouprealtyservices.com](http://www.granitegrouprealtyservices.com)
- Gowen Realty: [www.gowenrealty.com](http://www.gowenrealty.com)
- Kressy Real Estate: [www.kressy.com](http://www.kressy.com)
- Lakes Region Realty: [www.lakesregionrealestate.com](http://www.lakesregionrealestate.com)
- Lamprey & Lamprey Realtors: [www.lampreyandlamprey.com](http://www.lampreyandlamprey.com)
- Maxfield Real Estate: [www.maxfieldrealestate.com](http://www.maxfieldrealestate.com)
- McLane Realty: [www.mclanerealtyplymouth.com](http://www.mclanerealtyplymouth.com)
- Mountain Country Realty: [www.mountaincountryrealestate.com](http://www.mountaincountryrealestate.com)
- Nash Realty: [www.nashrealty.com](http://www.nashrealty.com)
- New Hampshire Colonials Real Estate: [www.squamlake.com](http://www.squamlake.com)
- Noseworthy Real Estate: [www.noseworthyrealestate.com](http://www.noseworthyrealestate.com)
- Old Mill Properties: [www.oldmillprops.com](http://www.oldmillprops.com)
- Peabody and Smith: [www.peabodysmith.com](http://www.peabodysmith.com)
- Pine Shores Real Estate: [www.pineshoresllc.com](http://www.pineshoresllc.com)
- Preferred Vacation Rentals: [www.preferredrentals.com](http://www.preferredrentals.com)
- Remax Bayside: [www.baysidenh.net](http://www.baysidenh.net)
- Roche Realty: [www.rocherealty.com](http://www.rocherealty.com)
- Strawberry Lane Real Estate: [www.strawberrylane.com](http://www.strawberrylane.com)
- Town & Forest Realty: [www.townandforest.com](http://www.townandforest.com)

**CLASSIFIED**  
 FOR ADVERTISING CALL (603) 444-3927

**ARBORVITAE PRIVACY HEDGE TREES**

8-foot dark American arborvitae (premium) now only \$195 each.

Free Delivery, FREE installation, *Selling fast!*

**518-536-1367**  
 Lowcostreefarm.com

**PLACE YOUR AD, Get Read, GET RESULTS!**

**ANTIQUE & VINTAGE SHOW**

**Saturday April 16**  
 9 am to 1 pm

Dover Elks Lodge- 282 Durham Rd. Dover, NH  
 Antiques Vintage, collectibles, jewelry, ephemera

9am to 10am \$6.  
 10am to 1pm FREE

**Mention this ad for \$1 off!**

Dealer Inquiries Welcome.

**HELP WANTED**

Mill Maintenance Mechanic opening. Individual will be responsible for repairs and routine tasks including preventative maintenance. Preferred candidate should have good understanding of mechanical, electrical, hydraulic, pneumatic systems, welding, and safety procedures. We offer competitive pay and benefits, employee discounts, and paid time off. Email resume to [office@ossipeemountainlandcompany.com](mailto:office@ossipeemountainlandcompany.com) or apply in person at 844 Whittier Rd, Tamworth, NH.

**LOVE WHERE YOU LIVE SHOP LOCAL LIVE WHERE YOU SHOP**

**LOW COST SPAY/NEUTER**

Rozzie May  
 Animal Alliance, cats and dogs.

Cat Cab service available.  
 Military discounts.

Sign up on line  
[www.rozziemay.org](http://www.rozziemay.org)  
 or call 603-447-1373

**To place your classified line ad, please call our TOLL FREE number: 1-877-766-6891**

# HELP WANTED



**Full-Time Installers Assistant**

Energysavers Inc, a 46 year old hearth & spa product retailer in the Lakes Region, is looking for a motivated individual that wants to learn the trade of installing hearth products. You must be comfortable working on roofs when necessary and able to work with an installer to move heavy items. Energysavers pays for all educational costs to get and maintain NFI wood, gas and pellet certifications as well as a NH gas fitters license for gas hearth installations and service. **LEARN WHILE YOU EARN!**

No prior experience required. Must have a valid driver's license and pass the pre-employment drug screening. Stop in to fill out an application:

**Energysavers Inc,  
163 Daniel Webster Hwy, Meredith NH**

**THE WOODS**  
Campton, NH  
**ACCEPTING APPLICATIONS NOW**  
For 62 years of age or older, Handicapped/disabled regardless of age.  
**LOW WAITLIST.....**  
Rents based on income!  
**Amenities Include:**  
Heat & Hot Water ~ On-site Laundry  
Community Room ~ Elevator  
24 Hour Maintenance ~ Secured Building  
**Garden Space Available For Residents**  
Income restrictions apply.  
For qualification and application information  
Call 1-800-338-8538  
TTY Accessible

Professionally managed by  
**Realty Resources Management**




*This institution is an equal opportunity provider and employer*



TEMPORARY AND PERMANENT PLACEMENT SPECIALISTS  
260 Main Street, Littleton, NH 03561  
**603-444-1261**  
**603-444-4895- Fax**  
**WWW.ALLSTAFFCORP.COM**

Kate Cassidy - Executive Director • Lindsey McGrath - Office Administrator  
Specializing in Engineering, Manufacturing, Administrative, Executive Management and Medical Placements

For online application:  
<https://allstaffcorp.com/forms-north-country/>

**Benefits**  
Full time or Part time positions Available  
Entry Level with on-the-job training

**UP TO \$2,000.00 SIGN ON BONUS ON SOME POSITIONS!!**

Medical Secretary – entry level will train  
Welders – 1st Shift Monday – Thursday  
Mail Processor  
Material Handler  
Assembler  
Machine Operator  
Metal Finishing Supervisor  
Facilities and Maintenance Manager  
Maintenance Supervisor –  
MFG Supervisor 2nd shift  
MFG Supervisor 3rd shift  
EHS Intern  
Engineering Intern  
Tool Room Machinist  
4th shift work 36 hours and get paid for 40 hours  
Planner I –  
Senior Associate Manufacturing Engineer  
Machine operator – 1st shift  
Factory Clerk – data entry  
Warehouse - starting rate \$18.00 per hour  
Accounting Associate  
Production Line – all shifts  
Picker/Shipper – 1st and 2nd shift  
Maintenance Mechanic – 1st shift Excellent Pay Rate  
Stitcher's 1st shift- 7AM – 3PM entry level will train  
Production Line – 3rd shift M –F 11PM – 7AM  
Pickers – M – F 7AM – 3:30PM  
Production Supervisor  
MFG Engineer  
Assemblers – 1st and 2nd shift positions  
Shipping & Receiving  
Machine Operator – 2nd & 3rd shifts  
Utility Operator – entry level 2nd & 3rd shift  
4th Shift work 36 hours and get paid for 40 hours  
(Sat, Sun & Mon)  
CNC Machine Operator  
Set up specialist  
Plating Tech – Excellent starting wage – 2nd & 3rd shift  
Specialized Machine Operator - 2nd & 3rd Shift or make your own shift



**Loon Mountain Resort**

Loon Mountain is hiring for a Full-Time, Year-Round **Human Resources Coordinator**

Responsible for a variety of administrative duties to assist with recruiting, employee housing, uniform ordering, safety programs, and team communications and events.

Proven administrative skill, computer experience, and guest service skills required.

Benefits Package includes:  
Medical, Dental and Vision, Paid Time Off, 401K Retirement Plan, and ski & ride privileges in an exciting resort environment.

For more information or to apply online please visit  
[www.loonmtn.com/jobs](http://www.loonmtn.com/jobs)  
Equal Opportunity Employer



**2022-2023 OPENINGS**  
**Inter-Lakes Elementary School**  
**Administrative Assistant**

**Inter-Lakes Middle/High School**  
**Special Education Teacher**  
**School Psychologist**  
**Physical Science Teacher**

**District Wide**  
**Dean of Learning**

For more information visit:  
<https://www.interlakes.org/administration/16>  
EOE



**Precision Lumber Inc.**

**IMMEDIATE OPENINGS**  
**SAWMILL AND PLANER MILL WORKERS**

**DAYTIME SHIFT**  
**BENEFITS INCLUDE**  
VACATION, SICK AND HOLIDAY PAY, INSURANCE, CREDIT UNION, 401(k) PLAN, ATTENDANCE BONUS

Apply in Person  
or email [precisionlumber@lumbemh.com](mailto:precisionlumber@lumbemh.com)  
to request us to email an application



**Precision Lumber Inc.**  
576 BUFFALO ROAD, WENTWORTH NH 03282  
[WWW.LUMBERNH.COM](http://WWW.LUMBERNH.COM)



## OUTSIDE THE BOX

Contact your Sales Representative to discuss advertising options  
Tracy Lewis  
603.616.7103  
[tracy@salmonpress.news](mailto:tracy@salmonpress.news)



**Precision Lumber Inc.**

**WATCHMEN WANTED**

**PART TIME WATCHMEN POSITIONS AVAILABLE**



**Precision Lumber Inc.**  
576 BUFFALO ROAD, WENTWORTH NH 03282  
[WWW.LUMBERNH.COM](http://WWW.LUMBERNH.COM)  
603-764-9450



**NOW HIRING**



**Full Time / Part Time Seasonal Positions Available April Through October.**

Owl's Nest Resort, currently the Northeast's largest resort expansion, is the ideal place to develop a successful career in Resort Hospitality. Conveniently located just off I-93 (Exit 28) Thornton/Campton. There is simply no better place to work in the White Mountain/Lakes Region.

We offer competitive pay in a fun work environment. Schedules are flexible & based on business need. Benefits include court and course privileges, discounted food & beverage, and more.

**To apply:** Visit our website [www.ownestresort.com/employment](http://www.ownestresort.com/employment) and complete the Employment Contact Form or email your cover letter and resume to [jobs@ownestresort.com](mailto:jobs@ownestresort.com). No phone calls, please.


**Multiple Seasonal Opportunities Available:**

- Starter/Ambassador
- Cart Barn Attendant
- Golf/Tennis Shop
- Equipment Operator
- Course Laborer
- Waitstaff (Dining Room and Patio)
- Beverage Cart Attendant
- Bartender
- Restaurant Shift Supervisor
- Guest Services Assistant
- Line Cook
- Dishwasher
- Prep Cook
- Guest Activities Assistant
- Banquet Server
- Restaurant Manager
- Banquet Captains

LCI Management DBA Owl's Nest Resort provides equal employment opportunities (EEO) to all employees and applicants for employment without regard to race, color, religion, sex, national origin, age, disability, or genetics.

In addition to federal law requirements, Owl's Nest Resort complies with applicable state and local laws governing nondiscrimination in employment in every location in which the company has facilities. This policy applies to all terms and conditions of employment, including recruiting, hiring, placement, promotion, termination, layoff, recall, transfer, leaves of absence, compensation, and training.

Owl's Nest Resort expressly prohibits any form of workplace harassment based on race, color, religion, gender, sexual orientation, gender identity or expression, national origin, age, genetic information, disability, or veteran status.



**Upper Connecticut Valley Hospital**

**JOB OPPORTUNITIES**

**Spotlight Positions:**

Phlebotomist	Paramedic
Registered Nurse	Certified Surgical Technician
RN – Charge Days	Multi-Modality Radiologic Tech
RN – Med/Surg-Charge Nights	Medical Assistant
RN – Med/Surg Nights	Medical Technologist - Lead
RN Nurse Educator	Occupational Therapist
RN Nurse Manager – ED/Med-Surg	Physical Therapist
Licensed Nursing Assistant	Cook
LNA/Health Unit Coordinator	Customer Service Representative

**APPLY ONLINE**  
[WWW.UCVH.ORG](http://WWW.UCVH.ORG)  
Upper Connecticut Valley Hospital  
181 Corliss Lane, Colebrook, NH 03576  
Phone: (603) 388-4236  
[Ucvh-hr@ucvh.org](mailto:Ucvh-hr@ucvh.org)  
EOE



**Love Your Community Shop Local**

**SalmonPress.com**



# HELP WANTED

## INNOVATIVE CONTRACTORS

52 Winter Street  
Ashland, NH 03217

We are currently seeking lawn and property care people (\$18 per hr), light carpentry/Handyman (based on experience).

Dock installation (\$23 per hr). Located on Squam Lake. Working as a team member is important!

### FULL AND PART TIME POSITIONS AVAILABLE

Will Train energetic people wanting to learn  
Must have a valid driver license  
Boat License a PLUS!

**Please contact Melanie @ 603-968-7518**

Monday – Friday: 9:00am – 3:00pm



White Mountains  
Community College

## ADJUNCT FACULTY POSITION AVAILABLE

LITTLETON, NH

White Mountains Community College is seeking a qualified individual to teach in our Commercial Driver Training Program in Littleton, NH.

To apply, please submit your application with cover letter, resume, and a copy of your transcript(s) at

<https://www.wmcc.edu/about/employment/>.

EEO



### Lumber & Building Materials Contractor Sales

Our Ashland location is searching for a member of our Lumber & Building Materials Contractor Sales Team. You will prepare quotes, orders, invoices, special orders and purchase orders. This position will also coordinate deliveries and returns as necessary. You will serve as a resource for the customer, helping them make selections and build their confidence using your product knowledge and excellent customer service. Weekend hours required on a rotating basis.

You may apply in person or download an application from our website. All applications should be submitted to:

Dan Uhlman, General Manager  
20 West Street, Ashland, NH 03217  
or you may email to [duhlman@belletetes.com](mailto:duhlman@belletetes.com).

E.O.E.

- ▶ Competitive Wages
- ▶ Paid Vacation
- ▶ Paid Holidays
- ▶ Paid Time Off
- ▶ Health Insurance
- ▶ Profit Sharing
- ▶ Store Discounts
- ▶ 401k



### Lumber & Building Materials Yard Associate

Our Ashland location is searching for a member of our Lumber & Building Materials Yard Team. The primary responsibility of a Lumberyard Associate is to maintain customer service per company standards, the accurate and efficient loading and unloading of all lumberyard related transactions. In addition, you will be responsible for maintaining the appearance of the yard and racks in an orderly and clean manner. Forklift experience and heavy lifting is required. Weekend hours required on a rotating basis.

You may apply in person or download an application from our website. All applications should be submitted to:

Dan Uhlman, General Manager  
20 West Street, Ashland, NH 03217  
or you may email to [duhlman@belletetes.com](mailto:duhlman@belletetes.com).

E.O.E.

- ▶ Competitive Wages
- ▶ Paid Vacation
- ▶ Paid Holidays
- ▶ Paid Time Off
- ▶ Health Insurance
- ▶ Profit Sharing
- ▶ Store Discounts
- ▶ 401k

## CENTER HARBOR PARKS & RECREATION LIFEGUARDS & WATER SAFETY INSTRUCTOR NOW HIRING FOR SUMMER SEASON

Center Harbor Parks and Recreation is now hiring for lifeguards at the small Town Beach on Lake Winnepesaukee

(\$14.00 / hour) and Water Safety Instructor (\$16.00/hour)  
Must be 16 years of age.

Must be American Red Cross and CPR certified!

Parks and Recreation will reimburse one-half cost of course.  
Email: [parksandrecreation@centerharbornh.org](mailto:parksandrecreation@centerharbornh.org)

## Tilton-Northfield Water District Water Operator

The Tilton-Northfield Water District is accepting applications for a full time permanent Water Operator position. The position will perform skilled and semi-skilled work involving the operations and maintenance of a water treatment and water distribution system.

Position requires a current New Hampshire driver's license, ability to lift 80 lbs., heavy equipment operating experience; being able to respond to emergencies, be on a rotating on-call schedule and live within 15 minutes of the District. Overtime is required.

Minimum qualifications include a high school diploma or GED; possession of a NHDES Grade 1 Water Treatment and Grade 1 Distribution License (or must be willing to obtain these licenses within the first year of employment).

The Tilton-Northfield Water District offers a competitive hourly rate and benefits package. Please send letter of introduction with resume and references to: Tilton & Northfield Aqueduct Co., Inc. 14 Academy Street Tilton, NH 03276. Applications are available at our website [t-nwaterdistrict.com](http://t-nwaterdistrict.com) or at the office.

The successful applicant will be required to pass a background check, a DMV check and a drug test. EOE/ADA/AA

## Moultonborough School District Fall and Winter Coaching Opportunities

The Moultonborough School District has the following coaching opportunities available for Fall and Winter 22-23:

- Varsity Girls Volleyball Coach**
- Assistant Girls Volleyball Coach**
- JV/Assistant Varsity Boys Soccer Coach**
- JV/Assistant Varsity Girls Soccer Coach**
- Varsity Boys Basketball Coach**
- Volunteer Coaches**

To apply, complete application found at: <http://www.sau45.org/district/employment> and submit along with a letter of interest to:

Chris Wood, Athletic Director  
Moultonborough School District  
PO Box 228  
Moultonborough, NH 03254  
or email all documents to: [cwood@sau45.org](mailto:cwood@sau45.org)

Equal Opportunity Employer

# HELP WANTED



## WE ARE HIRING!

PSI Molded Plastics is located in beautiful Wolfeboro, NH.

We offer competitive pay rates

Benefits include Health & Dental Insurance, Vision, Short Term Disability, Long Term Disability, Life Insurance, 401k, 10 paid holidays, paid vacation time, paid sick time, and many other incentives!

**Assemblers – 2<sup>nd</sup> & 3<sup>rd</sup> Shift - Starting Pay \$14.50**

**Machine Operators – 2<sup>nd</sup> and 3<sup>rd</sup> Shift - Starting Pay \$14.50**

**Process Technician – 2<sup>nd</sup> Shift - Starting Pay \$19.00**

**Spray Painters – 2<sup>nd</sup> and 3<sup>rd</sup> Shift - Starting Pay \$16.00**

**Sanders 1<sup>st</sup> Shift - Starting Pay \$14.50**

**\$.75 per hour shift differential on 2<sup>nd</sup> shift.**

**\$1.50 per hour shift differential on 3<sup>rd</sup> shift.**

**\*\*\$1,000 SIGN ON BONUS FOR FULL TIME EMPLOYEES**

**\*\*\$500 SIGN ON BONUS FOR PART-TIME EMPLOYEES**

**\*\*SUBJECT TO TERMS AND CONDITIONS\*\***

For immediate consideration, please come to Five Wickers Drive Wolfeboro, NH to complete an application or visit our website for more information at [www.psimp.com](http://www.psimp.com).

You can also email your resume directly to [donna.doyle@psimp.com](mailto:donna.doyle@psimp.com), please be specific as to what shift and position.

**PSIMP an Equal Opportunity Employer.**

**ISO 9001:2015 Registered.**

## THE MOUNTAIN CLUB ON LOON

90 Loon Mountain Road  
Lincoln New Hampshire 03251  
603-745-2244 ext. 5361



We are currently seeking motivated individuals to join our Housekeeping Department. Immediate openings for the following positions:

### Room Attendant - Public Area Attendant - Laundry Attendant-Runner

- A very competitive wage of \$16.50 per hour-may vary with experience.
- Daily incentive bonus
- Longevity bonus
- Full-time year-round with benefits.
- Work indoors-nice and cool in the summer, nice and warm in the winter
- Planned staff activities
- Discounts at our Black Diamond Pub
- Discounts at the Viaggio Spa for spa services
- Use of our wellness center
- Seasonal ski pass



**\$500.00 Sign on Bonus**

*Take a picture of me so you don't lose me.*



**BELKNAP**  
TREE & PLANT



**CARROLL COUNTY**  
LANDSCAPE

## NOW HIRING

Crew Leads & Crew Members

- Landscape Maintenance
- Landscape Construction
- Garden Services
- Tree Climbers & Ground Crew
- Mowing Department
- Plant and Tree Health

We offer Full and Part-Time work  
Seasonal or Year-Round positions  
Great Pay and Benefits

**\$1,000 Bonus**

*For select, experienced applicants*

apply today at  
**LAKESJOBS.COM**

## Town of Plymouth Highway Department

Seeking a qualified individual to perform all aspects of highway construction, maintenance and snow removal, will require you to work during adverse weather conditions such as high winds, hurricanes, and other weather events including snow and ice storms. The final candidate will have a minimum CDL-B with air brake endorsement (or the ability to attain one in a short period of time) and will be required to pass a physical, including a drug and alcohol screening, and will be subject to a criminal background check as well as a driving records check.

Applications are available on the Town of Plymouth's website, Mail application to Plymouth Highway Dept., 6 Post Office Square, Plymouth NH 03264, or upon request, 603-536-1623, at the Plymouth Highway Garage. Hours are from 6am-2:30pm. Please ask for Joe or Miah.

## Town of Plymouth Highway Department Highway Worker/Mechanic

The town of Plymouth, NH is offering a hiring bonus up to \$2000, and up to \$25 per hour, an attractive benefit package, for a qualified individual who has a knowledge of small engine repair, diesel engine repair, hydraulic systems operation and repair and general knowledge of light and heavy-duty trucks. Be part of winter operational services. CDL-B with air brake endorsement preferred. It is required to pass a physical, including a drug and alcohol screening, and will be subject to a criminal background check as well as a driving records check.

Applications are available on the Town of Plymouth's website, Mail application to Plymouth Highway Dept., 6 Post Office Square, Plymouth NH 03264, or upon request, 603-536-1623, at the Plymouth Highway Garage. Hours are from 6am-2:30pm.

## Come Join our Team WE ARE HIRING!

- **Steel Erectors**
- **Metal Roof & Siding Installers**
- **Foreman, Leadmen**
- **Laborers**

**Benefits:** Paid Vacations, 401K, Health and Dental Insurance



Application available at:



630 Daniel Webster Highway Plymouth, NH 03264  
(603) 536-3553

**Leading Pre Engineered Metal Building Co.**

**Call our toll-free number 1-877-766-6891 and have your help wanted ad in 11 papers next week!**

# HELP WANTED

**Laborer wanted**  
**\$25/hour to start**  
**Parker's Tree Service**  
**603-279-5455**

## VARNEY-SMITH Lumber Company, Inc.

### CDL TRUCK DRIVER/ YARD MAN

#### Duties to include:

- Local deliveries of lumber-building materials.
- Loading-off loading incoming and outgoing deliveries
- Must be conscientious, self-motivated, good with people, a team player
- Able to lift a variety of building materials
- Preferably long-term employee

#### Benefit to include:

- Competitive Wages
- Health Insurance
- Vacations
- Holidays
- Overtime pay

Please Apply in person at  
 2701 Route 302, Lisbon, NH 03585  
 No phone calls please.

## Help Wanted 2022 Summer Season

Holderness Harbor is currently seeking motivated individuals who enjoy working in a friendly yet fast paced marina environment. Must be at least 16. Boater's Safety license preferred but not required. Interested candidates are encouraged to contact us via email through our website holdernessharbor.com under contact us or call 968-9001 and leave a message.

Positions include Inside Customer Service/  
 Outside Dock and Boat support.

## Scott Burns' Landscaping, LLC

Well-established Lakes Region landscape company is hiring for the upcoming season. Positions available include gardeners as well as hardscape and softscape crew members.

If you are looking to change it up and love the outdoors with a M-F work schedule, give us a call. Valid driver's license required.

For more info, contact Scott at 279-8100 or email [scott@scottburnslandscaping.com](mailto:scott@scottburnslandscaping.com)

## Mountainside

### LANDSCAPE & EXCAVATION

Landscape & Excavation company  
 looking for full time employees.

We service the Tuftonboro,  
 Wolfeboro and Moultonboro areas  
 and the islands of Lake Winnepesaukee.

Please email  
[mtnsidelandscape@roadrunner.com](mailto:mtnsidelandscape@roadrunner.com),  
 or call 603-569-4545 for details.

[salmonpress.com](http://salmonpress.com)

## HELP US SAVE LIVES.

### NOW HIRING!

JOIN OUR TEAM TO MANUFACTURE  
 TURNOUT GEAR THAT PROTECTS  
 FIREFIGHTERS.

Our mission is to keep firefighters safe  
 by providing protective gear they can trust,  
 helping to ensure they can return safely  
 to their loved ones.

MSA Globe has handcrafted Turnout Gear  
 since 1887. Today, we continue to lead the market  
 in serving firefighters by providing innovative  
 head-to-toe solutions that offer advanced  
 performance and safety.



#### Earn up to \$25/hr

Rate dependent upon experience and ability  
 to demonstrate skills and proficiency over time.



#### Earn up to \$2,000 Sign-On and Stay Bonus



#### Growth Opportunities

Pathways are set up for associates to learn  
 and grow within the company.



#### Full-Time Associate Benefits

- Medical insurance
- Dental insurance
- 401k w/ company match
- Productivity and attendance bonuses
- Tuition reimbursement of up to 90% after one year
- And more...



#### Hours

- 6:00 am - 3:30 pm (Offering flexible hours)  
 Monday-Friday
- OT available

To view all career opportunities at MSA Globe go to  
[msasafety.com/careers](https://msasafety.com/careers)

\*Terms and conditions apply. HOURLY ASSOCIATES HIRED FROM JUNE 1, 2021, THROUGH DECEMBER 31, 2021



16-6495-MCP / 11.2021

## WHITE MOUNTAINS REGIONAL SCHOOL DISTRICT

2021-2022 School Year

Professional & Support Staff

### WHITE MOUNTAINS REGIONAL SCHOOL DISTRICT

Substitute Teachers  
 Paraprofessionals  
 Long-Term High School Computer Science Teacher  
*(5/6/2022-6/22/2022)*  
 Long-Term Middle School Science Teacher  
*(May to June 2022)*  
 Long-Term Grade 5/6 Teacher  
*(May to June 2022)*  
 Custodian Leader *(beginning 7/1/2022)*  
 Middle School Math Teacher *(2022-23 school year)*  
 Certified Speech Assistant *(2022-23 school year)*  
 Specialized Paraprofessional/LNA  
*(part-time; 2022-23 school year)*  
 Teacher Leader/Instructional Coach  
*(2022-23 school year)*  
 High School Humanities Teacher  
*(2022-23 school year)*

High School Special Education Teacher  
*(2022-23 school year)*  
 Occupational Therapist *(2022-23 school year)*  
 Middle School Social Studies Teacher  
*(2022-23 school year)*  
 School Counselor - Middle School  
*(2022-23 school year)*  
 Temporary Scanner  
*(please send resumes to [codyarsenault@sau36.org](mailto:codyarsenault@sau36.org))*

Applicants must hold the appropriate NH credential  
 for most positions or a Statement of Eligibility (SOE)  
 issued by the NH Department of Education.

\*\*\*Substitute teacher rate of pay is \$100 per day  
 SAU 36 will pay for the required  
 Criminal Background Check\*\*\*

#### For further information, contact:

Cody Arsenault, HR/Payroll Manager  
 White Mountains Regional School District, SAU #36  
 14 King Square  
 Whitefield, New Hampshire 03598  
 TEL.: 603-837-9363/FAX: 603-837-2326  
 Email: [codyarsenault@sau36.org](mailto:codyarsenault@sau36.org)

## Wood Wall Panel & Truss Assembler

Wallace Building Products is a growing 100% Employee-Owned company and we are one of the largest manufacturers of wood framing components in New England. You will work in an indoor shop in Danbury or Pembroke as part of a team that builds quality wood wall panels and floor trusses for the construction industry.

Experience or will train. Good starting pay and raises based on skills learned and productivity. Benefits include health, dental, vision, short-term disability, long-term disability and life insurances, paid vacation time, monthly bonuses, and a generous retirement plan.

Apply in person at 1525 US Route 4 (40 Wallace Lane) in Danbury, NH or call 768-5900.

Wallace

**Call our toll-free number 1-877-766-6891  
 and have your help wanted ad in 11 papers next week!**

# Submit your photos to MVSB's Annual Community Photo Contest

MEREDITH — MVSB (Meredith Village Savings Bank) is pleased to launch their annual community photo contest. Winning full color photographs will be featured in the Bank's complimentary 2023 community calendar, on their Web site, on note cards and/or on the Bank's holiday cards. Entries can be submitted electronically at [mvsb.com/photo-contest](http://mvsb.com/photo-contest) through Tuesday, May 31.

"We are looking for images that convey all aspects of life and beauty in New Hampshire - from daily life and scenery to local events and celebrations," said Cindy Hemeon-Plessner, Senior Vice President and Chief Marketing & Experience Officer at

MVSB. "The contest is one of our favorite traditions as the Bank and we can't wait to see all of this year's submissions."

Because of differences in photo specifications, there are two categories participants can enter - one for Web site/social media photographs and one for images to feature in the Bank's annual community calendar. A maximum of five (5) photos per photographer can be submitted for each category and photographers will be awarded \$100 for every winning photo selected.

The 2023 complimentary community calendar will be available in wall and desk format at all MVSB locations in

late fall. Visit [mvsb.com/photo-contest](http://mvsb.com/photo-contest) to learn more or to submit your photos!

Unlike a stock bank, MVSB is a mutual savings bank that operates for the benefit of its depositors, borrowers and surrounding communities. As a result, MVSB has remained steadfast in fostering the economic health and well-being of the community since it was founded in 1869. For over 150 years, Meredith Village Savings Bank (MVSB), has been serving the people, businesses, nonprofits and municipalities of New Hampshire. MVSB and its employees are guided by the values of accountability, mutuality, excellence, respect, integrity, teamwork and stewardship. To learn more, visit



"Lupine Field" by Holly Heath - June 2022 Photo Calendar Feature Contest Winner.

COURTESY

any of the local branch offices located in Alton, Ashland, Center Harbor, Gilford, Laconia, Melvin Village, Meredith, Moultonborough, Plymouth, Portsmouth or Wolfeboro, call 800-922-6872 or visit [mvsb.com](http://mvsb.com).

## LRAA Gallery hosting presentation on oil painting

TILTON — The public is invited to attend a presentation by Dee Lessard on Oil Painting April 18 at 6:30 p.m. at the Lakes Region Art Association Gallery.

Art and creativity have always been at the core of anything Lessard has put her hand to doing! Oil painting

has become a time to escape to the place where time stands still. Loving all the challenges that comes with it, she continues to paint while being involved in local and national art groups.

Lessard resides in Manchester with her husband Guy and their miniature schnauzer, Rosie. She runs and operates a small hair salon there too.

Up until recently,

she served (for several years) on the Board of the local art group, MAA (Manchester Artists Association) and was also the Gallery Director at East Colony Fine Art in Manchester.

Her work can be seen at several local and national online galleries and art shows.

Membership opportunities are open to all with multiple membership levels:

Supporter: \$35/year Participating Member: \$50/year Patron: \$100/year

Visit our Web site for more information: [www.LRAANH.org](http://www.LRAANH.org)

Lakes Region Artist Association, 120 Laconia Rd, Tanger Outlets Suite 300, Tilton, NH Open 10 a.m. - 6 p.m., Thursday through Sunday 603-998-0029.

## Anestis earns Scholar All-American honors

PLYMOUTH — Freshman Chase Anestis (Belmont) was one of 451 student-athletes to earn 2021-22 Scholar All-America honors as announced by the National Wrestling Coaches Association (NWCA) Friday afternoon.

"On behalf of the NWCA Board of Directors, it is my honor to recognize these exceptional athletes and teams," said NWCA Executive Director Mike Moyer. "Wrestling takes much focus and sacrifice and we are proud to honor these wrestlers for their obvious commitment to their academic pursuits."

Anestis led the Panthers with a 12-6 record, including a 7-2 mark when wrestling at 184 pounds. He finished the year with three pins, while his winning percentage (.667) was also tops on the team.

Plymouth State finished the year with a 1-6 mark and placed 18th at the NCAA Division III Northeast Regional Championships.

The full NWCA release and a list of all Scholar All-America teams and individuals is available at [www.nwcaonline.com](http://www.nwcaonline.com).