

Winter storm leaves thousands in the dark

REGION – A powerful winter storm overspread the region last weekend, causing several accidents and widespread power outages.

At the height of the Dec. 5 storm, nearly 50,000 customers statewide were without power, with multiple communities picking up over a foot of snow. The speed limit was reduced on the Mass. Pike, which saw several accidents.

Surface streets were equally treacherous, with accidents reported in Charlton, Leicester, and Spencer. Police in those communities also received multiple reports of downed power lines.

In Sturbridge, Route 148 was closed in the area of Warren Road due to fallen trees and power lines. Meanwhile, the Warren Fire Department helped provide assistance during multiple accident responses on the Mass Pike.

The storm also caused several local events to be postponed. The fifth annual Stuff the Bus campaign, which had been slated for Dec. 5 in three towns, had to be postponed to Saturday, Dec. 12.

Run each year by AA Transportation, the Stuff the Bus program enables the community to donate toys for local youngsters. On Dec. 12, AA Transportation will bring buses to Spencer, North Brookfield, and Leicester. From 10 a.m. to 2 p.m., AA employees at each site will collect new, unwrapped toys.

AA Transportation officials thank all donors for their continued support and patience through the postponement.



Photo Courtesy

Accidents were reported throughout the area during last weekend's snowstorm, including this wreck in Charlton.

Charlton police continue annual Toy Drive



Photo Jason Bleau

Donations filled a cruiser on Dec. 6 during day two of the final weekend of the 2020 Charlton Police Toys for Tots Toy Drive.

BY JASON BLEAU
VILLAGER CORRESPONDENT

CHARLTON – Ringing in the 2020 holiday season, the Charlton Police Department continued its annual tradition collecting toys to benefit Toys for Tots.

On Saturday and Sunday, Dec. 5 and 6, the Charlton Police Department welcomed donation to help families in need provide a fun Christmas for their children in a year that has been particularly challenging. Each

year the Charlton Police team with the Worcester County Toys for Tots effort to collect toys throughout November culminating in a two-day final collection. According to Officer Derek Gaylord, who manned the drive on Dec. 6, this was a particularly successful year even in spite of the economic hardships being faced by many in the middle class.

“We’ve all been very impressed with the number of toys and the quality of the donations. We didn’t expect that this year, but it’s a good sign and something we’re very happy to see,” Gaylord said. “This shows us that the community really does care. There are a lot of people hurting and I think people are stepping up and doing the right thing. It’s much appreciated.”

The toy collection is always a great undertaking for the department and with 2020 having increased limitations due to the COVID-19 pandemic as well as a heightened need for the holidays the department and Toys for Tots had to evolve with the times. However, both parties remained committed to providing an opportunity for families to ensure their kids had a Christmas to remember.

“We do this every year and it’s ongoing for about six weeks

Turn To **TOY DRIVE** page **A8**



Photo Jason Bleau

Charlton's Town Hall is moving to appointment only visitation in the wake of a second wave of the COVID-19 outbreak.

Town Hall limiting traffic to appointment only

BY JASON BLEAU
VILLAGER CORRESPONDENT

CHARLTON – The Charlton Town Hall has been added to the growing list of municipal buildings in Southern Worcester County shifting to an appointment-only format of meeting with members of the local community. The shift is in response to the growing number of COVID-19 cases in the region which also led to a similar shift in nearby Dudley.

Town Administrator Andrew Golas said the decision to close the town hall

to the public and make all visits by appointment only is an attempt to help offset any risk of exposure for town employees. The move will also allow the town hall to maintain a controlled response to any COVID-19 situation without having to close down completely and disrupt services to the community.

“We did receive word that the town is being designated as a red community, so we’ve had that high-risk designation. As we’re seeing the increases in cases it will help ensure that we have continuity of government moving forward if there is an issue that involves us having to quarantine staff it limits our exposure to the public, but also allows for us to work remotely in a better fashion,” Golas said.

For the foreseeable future the town hall is asking that citizens call ahead to make an appointment with their specific department before visiting the building or handle their business over the phone if possible.

Turn To **TOWN HALL** page **A14**

Bay Path UNICEF Club holds fundraiser for children's nutrition



Photo Courtesy

This holiday season, the Bay Path Practical Nursing Academy UNICEF Club pounced on the opportunity to help support UNICEF USA to raise awareness and funds to children's nutrition worldwide by holding a bake sale.

CHARLTON — This holiday season, the Bay Path Practical Nursing Academy UNICEF Club pounced on the opportunity to help support UNICEF USA to raise awareness and funds to children's nutrition worldwide by holding a bake sale.

The UNICEF club raised and donated \$113.23.

UNICEF Club PR Officer, Isabella Boateng of Manchester, Conn. stated, “Malnutrition has resulted in almost 50 percent of all childhood deaths. UNICEF keeps increasing its efforts to reach the most remote villages and communities all over the world, to ensure that all children have the adequate nutrition

Turn To **UNICEF** page **A13**

With the right financial advisor, life can be brilliant.

What matters most to you in life? It's a big question. But it's just one of many questions I'll ask to better understand you, your goals and your dreams. All to help you live confidently – today and in the future.

Patrick O'Brien, CRPC®
Financial Advisor

The O'Brien Group
A financial advisory practice of Ameriprise Financial Services, Inc.

860.208.9913

66 Main St.
Putnam, CT 06260
patrick.obrien@ampf.com
ameripriseadvisors.com/patrick.obrien/

Ameriprise Financial

Be Brilliant.

Ameriprise Financial Services, Inc. Member FINRA and SIPC.
© 2019 Ameriprise Financial, Inc. All rights reserved. (11/19)

TIS THE SEASON TO SHOP LOCAL

Gifts, Gift Cards & Gift Certificate Ideas from these local businesses.

SHOP LOCAL THIS HOLIDAY SEASON! RUNNING THRU DEC. 18

Call June at 508-909-4062 or email jsima@stonebridgepress.news to advertise on this page

Now more than ever, it's important to Shop Local!

Must-haves to achieve a holiday wonderland

The end of the year marks a period of heightened festivity. Come the holiday season, homes and businesses are decorated and everyone seems to have an extra spring in their step.

The sight of snowflakes, candy canes, evergreen

wreaths, and Christmas trees can elicit nostalgia for happy holidays of the past, as well as excitement for what is yet to come. When it comes to decorating for the holidays, there are certain items that set the scene.

- Christmas trees: Germany is credited with starting the modern Christmas tree tradi-

tion. It dates back to the 16th century when devout Christians brought trees into their homes and decorated them. German settlers brought Christmas tree traditions to America upon their arrival in Pennsylvania in the 19th century.

- Mistletoe: Mistletoe is known as the "kissing plant" and it is customary for couples to kiss while standing beneath the plant, typically hung in doorways and arches.

Mistletoe was once hung to drive off evil spirits and ensure fertility. Kissing under the mistletoe was first found associated with the Greek festival of Saturnalia and later with primitive marriage rites.

- Lights: Lights are commonly seen during the holiday season. The custom of having holiday lights dates back to when Christmas trees were decorated with candles, which symbolized Christ being the light of the world. These traditions evolved from pagan rituals

that would celebrate the return of light of the sun as the days grow longer after the winter solstice.

- Yule log: Many families burn a yule log in the fireplace and watch it burn while listening to Christmas carols. The familiar custom of burning the log dates back to solstice celebrations and the tradition of bonfires. The Christmas tradition called for burning a portion of the log each evening until Twelfth Night, also known as the Epiphany, which takes place on January 6.

- Poinsettias: Poinsettias are a tropical plant that

originated in Mexico. Joel Roberts Poinsett was the first Ambassador from the United States to Mexico. He became enamored with the plants, and brought them back to his native South Carolina. An old Mexican legend suggests a poor girl had nothing to offer baby Jesus at Christmas Eve services, so she picked a handful of weeds and put them at the bottom of the nativity scene. These weeds burst into bright red flowers and became known as "Flores de Noche Buena," or "Flowers of the Holy Night."

Holiday decorations borrow traditions from all over the world to help establish a festive wonderland.

Pakachoag
Music School of
Greater Worcester

GIVE THE GIFT OF MUSIC!

4 WEEK LESSON SPECIAL: \$160

A Savings of \$40. In-person and remote options available, as circumstances permit.

Ages 6 and Up



www.PakMusic.org
info@pakmusic.org 508-791-8159

TALK OF THE TOWN
85 Main Street Ware Ma. 413-858-5172

A Unique Destination Experience

Health Food & Products

Crystals & Gemstones, Gifts, Books, Cards, Jewelry, Essential Oils, Soap & So Much More!

For our Current Hours and Events
Facebook.com/TalkoftheTownWareMA/

Dankee Diner
16 Worcester Rd., Charlton, MA 01507
Breakfast • Lunch • Dinner

PRIME RIB DINE-IN or TAKE-OUT
All day Thursday only starting at noon while it lasts till 8:00pm

Petite Cut 10 oz. \$19.95
Large Cut 14 oz. \$24.95
w/ baked potato & garlic green beans

~ GIFT CERTIFICATES ~

Call ahead for take-out 508-434-0358
Breakfast served all day • Cash only • ATM inside
Mon - Sat 7am-2 pm; Thurs & Fri till 8pm; Sun 7am-1pm
(Face mask required to enter)

Shop Local this Holiday Season!
Not sure what to buy?
A gift card makes a great gift!

Free gift wrapping, and select items discounted 25-50%!

Cormier Jewelers & ART GALLERY
A Family Business Since 1949
136 Main Street • Spencer • 508-885-3385
cormierspencer.com

Extended Holiday Hours:
Dec. 8-11 10-6; Dec 12 10-4
Dec. 15 & 16 10-6; Dec. 17 & 18 10-7;
Dec. 19 & 20 10-4

Higgins Powersports
We've got toys to please kids of all ages: electric bikes, electric skateboards, and more to check off your list! Plus, check our Facebook for our "Deals Of The Week" through Christmas!

OneWheel® Skateboards As low as \$50/month
Giant® E-Bikes on clearance!
Stacy® Mini E-Bikes As low as \$50/month

978-355-6343 • Rt. 122, Barre MA • www.higginspowersports.com

ANNIE'S THRIFT & VINTAGE

221 EAST MAIN ST (Rt 9)
EAST BROOKFIELD, MA
(in the former carpet store)

All you hope to find in a Thrift Shop ...and more!

Lovely old things, original photography & many creative & unique items
Good for the budget, and the planet too! Some of the best gifts to pass on are the second time around.

• Currently CASH ONLY •
OPEN Wed. & Thurs. 10 - 5 • Fri. & Sat. 9 - 4



GIFT CARDS
Great Gifts & Stocking Stuffers!

DQ Grill & Chill

\$3.00 OFF ICE CREAM CAKE
Any 8" or Larger

Limit One coupon per customer
Not valid with any other offer. Exp. 12/31/20

Route 9, Spencer
508-885-2748

Accepting Debit & Credit Cards

five leaves bakery & cafe

Gift Certificates

Let Us Host Your Holiday Party!
Assorted pies, cheesecakes, breads, pastries, cookies & bars for the Holidays
Sandwich Party Platters • Pastry Platters
Christmas Party Office Luncheons & Hostess Platters

BYOB 13 Mechanic St., Spencer, MA 01562
508-885-3760 • fiveleavesbakery.com

WE MAKE OUR OWN BREAD!
Tues 10-3 | Wed & Thurs 10-7 | Sat 10-8:30 | Dinner: Fri & Sat Reservations Only

Thibault's Country Store
Shop Unique & Local for the Holidays
Come experience a REAL Country Store!

Local Maple Syrup • Jams and Honeys
Ornaments • Greeting Cards
Fresh Ground Coffee Beans
Farm Fresh Eggs • Penny Candy
Cookies, Fudge, Cupcakes
Local Grass Fed Beef & Pork from Crooked Creek Farm • Unique Gifts • Handmade Canvas & Leather Bags
Pottery • Toys • Handmade Jewelry

Pick up your large animal, pet feed, bird seed and supplies, shavings, hay and pellet bedding next door at Thibault's Poultry, Inc.

92 North Spencer Road, Spencer • 774.535.1147
Hours: Thurs - Sat 10-6 • Sun 10-5
thibaultscountrystore.com

Daughter FOR Hire
It's almost the "Most Wonderful Time of the Year" and the busiest!
Cards, Decorating, Wrapping, Shopping...
in person, pick up, and online I will do!
Don't get overwhelmed! I am here for YOU!

Do you or someone you know need the assistance of a caring person? I love helping people and will be very reasonable. Call me, Melanie Silva at 774-200-6840.

ZUMBA FITNESS
Do It 4 U Studio

DO IT 4 U Studio
Spend an hour on you! With me...I dare you!
We are collecting for the Spencer Food Pantry & Toys For Kids!
Our class schedule is be M/Tu/Th 6pm • Fri 3pm and Sat 9am
Please follow us on Facebook for updates! DO IT 4 U! Here 4 U! To help you live your BEST LIFE NOW!
369 Main Street, Ste 5
Spencer, MA 01562 (508) 864-9224

FINE CRAFTSMANSHIP • EXPERIENCED DESIGNERS • CUSTOM FRAMING
OUTSTANDING PRINT SELECTION • PHOTO RESTORATION

Handmade gifts from local artisans

We have a variety of ready-made frames, prints, pottery, wooden bowls & wood carvings from local artists.

THE FRAMER'S GALLERY
Heritage Mall • 567 Southbridge Street, Auburn, MA 508-832-6111
FRAMERSGALLERYMA.COM
Walk-ins Welcome or by Appointment

Let us take the stress out of moving during the holiday season!

FRESH START THE MOVING CREW

CALL US TODAY
508-868-4291

www.FreshStartMovingCrew.com

MDPU# 31690 | USDOT# 2407387 | MC# 828326

OPEN 24/7
Great Gift for the Holidays

Pepin's Auto Wash
Totally Automated Car Wash

Purchase Gift Cards Online
VIP Fleet Cards

Route 9 • 1500 Main St., Leicester, MA 508-769-6604
Leo Pepin Jr. • Chantelle Pepin
pepinsautowash.com
pepinsautowash1@verizon.net



DECK THE WALLS with a FREE Benjamin Moore® Pint Sample!
BRING IN THIS COUPON

NAL'S PAINT CENTER
Auburn
Worcester - Leominster
Shrewsbury - Westborough

Name: _____
Email Address: _____
One coupon per person. Cannot be duplicated or reproduced. Exp. 1/31/21
SKU: 523906009096

Give The Gift Of Delicious Food & Drink
GIFT CERTIFICATE

308 LAKESIDE
CASUAL WATERFRONT DINING ON LAKE LASHAWAY

WEEKLY SPECIALS
\$6.99 East Brookfield Burgers
Monday thru Thursday during Lunch hours. (11 to 4)
\$10.99 Meals (Entree and Salad)
Monday and Tuesday Dinner (4 to Close)
Italian Night \$10.99 Italian Specials with Salad
Wednesday Dinner (4 to Close)

Open 7 days a week Sun - Thurs 11-8 • Fri & Sat 11-9
Please visit our website or Facebook page for our full menu.
308 MAIN STREET, EAST BROOKFIELD
774-449-8333 308 LAKESIDE.COM

Please call 774-449-8333 for reservations, take-out or reserve online 308lakeside.com

Family Owned Since 1962

Guzik Motor Sales Inc.
"Car buying the way it should be!"

Deck Your Driveway with a New Vehicle!

Jeep RAM DODGE

2019 Mazda MX-5 Miata RF
Grand Touring Coupe, I-4 cyl, 6 spd auto, 7,586 miles
Stk 3658um **\$27,995**

No misleading ads - No Gimmicks
The Lowest Interest Rates - Free Loaner Cars

WE KEEP IT SIMPLE, STRESS-FREE, CONVENIENT, AND ENJOYABLE! LET US SHOW YOU HOW EASY CAR BUYING CAN BE!

We're with you every step of the way! Before the sale, During the sale, and After the sale!

95 E. Main St., Rtes. 9 & 32, Ware
Just Over The West Brookfield Line 413-967-4210 or 800-793-2078
Come in and visit or browse our lineup at: www.guzikmotors.com

Joel H. Prouty Masonic Lodge continues long tradition of supporting Auburn youth



Photo Courtesy

AUBURN — Over the last 25 years, there has been a partnership that has evolved between the Auburn Youth & Family Services and the local fraternal lodge of masons, known as Joel H. Prouty Lodge situated at 780 Southbridge Street, Auburn for annual food drives held on Saturdays, Nov. 12, 19, and 26.

Normally, twice a year, the brothers at the lodge gather up their banner, tables, cold weather gear, and a crew to man their collection station outside of the Park’n Shop grocery store at 711 Southbridge Street, Auburn. But this year of COVID-19, has demonstrated that more people are in need of the services of Auburn Youth & Family Services than normal. So, the idea was brought up by Mark Maass, a Past Master of the lodge, to see if we could run more Saturdays between Thanksgiving and Christmas to continue the food drive collections. The members signed up immediately for 4 hour shifts for

mornings and afternoons for the next four weeks to man the collection table. For the last three weekends, Nov. 12, 19, & 26 the members of Joel H. Prouty Lodge have collected over \$3,000.00 in contributions that allowed them to shop in Park ‘n Shop to fill more than 100 boxes of canned goods, non-perishables, and even a few turkeys, which have been delivered to AY& FS each Monday following the drives. They will continue to collect food for the next three Saturdays, December 5, 12, & 19 so help them out and stop by with any donation you can.

Park ‘n Shop has a new owner, Kevin Meehan, and is fully supportive in out taking up the mantle of having a Food Drive for members of our community. Kevin O'Donnell, the current Master of the lodge, Dan Barston & Mark Maass are co-chairing the Food Drive efforts, and putting a plan in place to continue this effort the first Saturday of each month in the future. The target is to be

Joel H. Prouty Lodge members braving the cold while filling the baskets, and delivering the donations to the Auburn Youth and Family Services Center.

operational by March 2021, but could be sooner.

The masons are putting into action their values of brotherly love, relief, and truth to help, aid, and assist those that are less fortunate and in need of their assistance. They spend two consecutive weekends before Thanksgiving and before the Easter seasons to encourage their fellow man in assisting them in filling the pantries of the Auburn Youth & Family Services shelves so they may assist local families.

There has been a bond molded between the Auburn Youth & Family Services Executive Director, Sally D'arcangelo, the store manager Ed Paquette and Jim Alicea, Asst. Store Mgr. along with the Charity and Relief Committee of the masonic lodge, chaired by R.W. Daniel Barston.

You can learn more about the Auburn Youth & Family Services, Inc. mission to support families through Empowerment and Community Collaboration on the Web at: www.ayfs.org.

You can also learn more about the world's oldest & largest international fraternity through the Grand Lodge of Masons of Massachusetts on the Web at: www.massfreemasonry.org.

You can learn about the local lodge by emailing to joelhproutylodge@gmail.com.

Or drop by and visit any Tuesday evening after 7:00 p.m. to meet the members, and join in the conversation, have some refreshments, and learn some of the history of the fraternity both in Auburn and it's rich history in Massachusetts since 1733.

Festival of Crafts perseveres in 2020

BY JASON BLEAU
VILLAGER CORRESPONDENT

DUDLEY - The Shepherd Hill Music Parents Association didn't let the COVID-19 pandemic stop them from continuing their annual fundraiser the Festival of Crafts in 2020, shifting the event to an online experience.

The annual showcase of crafters has been a longstanding tradition at Shepherd Hill Regional High School as a staple of the holiday season drawing hundreds to purchase hand made holiday gifts with the proceeds to the entry fees helping support band, chorus and show choir programs at Shepherd Hill. In order to continue their largest fundraiser Shepherd Hill Music Parents Association took advice from one of the high school's teachers Kristin Griffiths to move to event to a digital setting through Dec. 11 to allow consumers to connect with sellers online.

Jeff Cloutier, President of the SHMPA,

said the process was smooth in working with crafters to embrace a format that is much different from past years. They also leaned heavily on webmaster Scott Szretter to help set up the online marketplace where participants could shop. The shift to virtual also required a more openminded approach to who could participate as a seller.

"In a normal year, we evaluate the crafters to make sure everything is hand made. We do not allow vendors, but for the virtual fair, we allowed anyone. It's been a tough year for everyone and most of our crafters are from New England, so we wanted to give everyone an opportunity. It is restricted to crafters who have some form of online presence, unfortunately we were not able to serve everyone this year," Cloutier said.

Unfortunately, the fundraiser efforts of the SHMPA have taken quite a hit in 2020 due to the COVID-19 pandemic. The association's second largest fund-

raising effort involved working volunteer programs at Gillette Stadium which has been unable to host fans or groups since April due to the outbreak. Cloutier acknowledged that the virtual fair has not produced the same income as the live event but at least it brought something to help the association continue to support the high school's music programs.

"The virtual fair only generated about 3 percent of what we make from the in-person fair. In a normal year, we make money on the crafter registration, customer admission and food sales. This year, we only have a small registration fee. We wanted to keep the fee low because this was more about doing something for both our crafters and our community. We also didn't know what to expect in terms of traffic," said Cloutier. "We want to thank all of our crafters and customers both past and present. Our fair works so well because we have loyal following with both our crafters and our

customer. I also want to thank our volunteers who got the fair up and running. Our organization is 100 percent made up of volunteers who selflessly dedicate their time."



ACCURACY WATCH

The Charlton Villager is committed to accuracy in all its news reports. Although numerous safeguards are in place to ensure accurate reporting, mistakes can occur.

Confirmed fact errors will be corrected at the top right hand corner of page 3 in a timely manner.

If you find a mistake, email news@stonebridgepress.news or call (508) 909-4106 during normal business hours. During non-business hours, leave a message in the editor's voice mailbox. The editor will return your phone call.

Charlton to maintain single tax rate

BY JASON BLEAU
VILLAGER CORRESPONDENT

CHARLTON – The Charlton Board of Selectmen voted unanimously to remain with a single tax rate, maintaining one unified rate that applies to business and residential properties. This approach will continue the town's tradition or spreading the tax burden evenly among residents and businesses.

Selectmen held their annual tax classification hearing in late November where they received a

brief presentation about the tax rate and what their votes would mean for the community. In the end Charlton's top board agreed to stay with the status quo and avoid putting added pressure on businesses to manage the tax burden. Selectman Bill Borowski helped lead the charge to support the single tax rate and clarified the vote of selectmen after the unanimous decision.

"What these motions were in a nutshell says that both residential and businesses are going to be taxed the same. The rationale behind that is you want to

encourage business to come to town and towns that have a split tax rate generally don't have quite a favorability," Borowski said. "In fact, you'll see many larger municipalities that even have a split tax rate have been trying, sometimes with great difficulty, to move that burden away from businesses."

Selectmen also argued that staying with a single tax rate with encourage businesses to move into town with the understanding that the tax burden will be distributed fairly.

Drive-Through Nativity

**SATURDAY
& SUNDAY
DECEMBER
12th & 13th
6pm - 8pm**



Live carolers & drive through scenes
Make this a part of your Christmas tradition!
Free and Open to the Public.
For more info,
visit www.charltonbaptist.org drive-through-nativity

Charlton Baptist Church
50 Hammond Hill Road, Charlton, MA 01507

Notice of Vacancy Sturbridge Board of Assessors

The Town of Sturbridge is seeking to fill a vacancy on the Board of Assessors. This is an elected, unpaid position. The person appointed must be a register voter of the Town of Sturbridge. A special election for the seat on the Board will be held in April of 2021.

The Board of Assessors is responsible for determining the fair and equitable valuation of all real and personal property in the Town, in accordance with Mass General Laws. The Board of Assessors duties include acting upon abatement requests for real estate, personal property, motor vehicle excise and boat excise taxes. The Board is also responsible for acting upon personal exemption requests for real estate (Elderly, Veterans, Blind Persons, Surviving Spouses, etc.) as well as acting upon applications for classification of real estate as agricultural/horticultural, forestry or recreational land. The Board meets once a month.

If you are interested a position on the Board, please send a letter of interest to Jeff Bridges, Town Administrator at JBridges@Sturbridge.Gov.

The position remains open until filled.
The Town of Sturbridge is an EOE.



of Worcester, Inc.

FAMILY HEALTH CENTER OF WORCESTER, INC.

Quality primary care, dental care, and health
benefits assistance for the entire family.

Hablamos Español.

Free Health Insurance Assistance

Open Enrollment
ends
January 23rd!

Are you uninsured?
Do you have questions about health insurance?
We can help.
Talk with one of our
Health Benefits Navigators today.

32 Orchard Street, Southbridge, MA 01550
(508) 860-7935
Open weekdays 8:30 a.m. - 5 p.m.
www.FHCW.org/Southbridge

26 Queen Street, Worcester, MA 01610
(508) 860-7700
Open weekdays 8 a.m. - 6 p.m.
Open Saturdays 8 a.m. - 3 p.m.
www.FHCW.org

“The Kimono in Print: 300 Years of Japanese Design” opens at Worcester Art Museum in February

WORCESTER—This winter, the Worcester Art Museum will present “The Kimono in Print: 300 Years of Japanese Design,” the first show devoted to examining

the kimono as a major source of inspiration and experimentation in Japanese print culture, from the Edo period (1603–1868) to the Meiji period (1868–1912). Drawing primarily

on the Museum’s extensive collection of Japanese prints, the exhibition explores the complementary influence of design ideas between kimono and print artists—and the consumers interested in both kimonos and prints. The exhibition will be accompanied by the presentation of a one-of-a-kind, contemporary wedding kimono specially commissioned by WAM from Chiso, the prestigious 465-year-old Kyoto-based garment maker known for their remarkable couture designs, which exemplify their centuries-long commitment to innovation, beauty, and versatility. The Kimono in Print: 300 Years of Japanese Design opens at WAM on Feb. 6, 2021 and runs through May 2, 2021. The Kimono in Print will be accompanied by a virtual exhibition on the Museum’s website, Kimono Couture: The Beauty of Chiso, exploring the hidden world of traditional kimono design and artistry still practiced by Chiso.

“At a time when segments of the fashion world are very focused on being ‘fast,’ it is gratifying to see an exhibition that tracks the slow but steady evolution of kimono design,” said Matthias Waschek, the Jean and Myles McDonough Director of the Worcester Art Museum. “Prints have been an essential Japanese art form since the 17th century, valued by audiences at many different levels of wealth and education. Our exhibition will help audiences understand more of the rich material and design culture of Japan, through a special look at the kimono, a distinctive form of Japanese clothing and an emblem of artistry and design in its own right. We are especially grateful to Chiso for the opportunity to commission a unique wedding kimono for our collection, an enduring work of art.”

Over the course of 300 years, Japanese print artists documented ever-evolving trends in fashion, popularized certain styles of dress, and even designed kimonos. The Kimono in Print presents the dialogue between print and kimono design through approximately 70 Japanese prints, as well as a selection of illustrated woodblock printed books and paintings. The exhibition begins with early prints from the late 17th century, when a more complex and sophisticated attitude towards clothing first appeared, as seen in the elaborate kimono worn by celebrity kabuki actors

and courtesans of the Edo (present-day Tokyo) pleasure quarters. Modern design books and prints from the early 20th century, inspired by or made for kimonos, will demonstrate how the boundaries between print and textile fashion and design became more fluid.

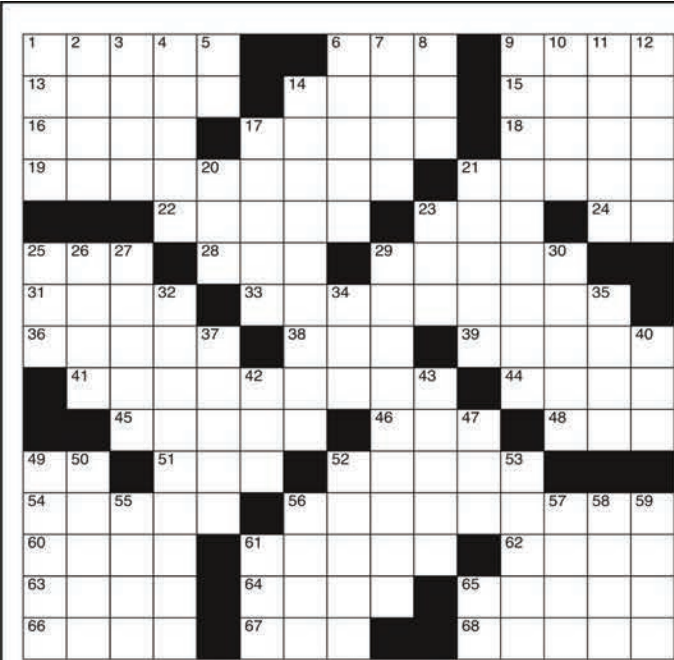
As an article of clothing, the overall shape and form of the kimono has changed little since the 14th century. While European and American clothing styles have transformed dramatically over the centuries in form, color, and style, the evolution of the kimono has been driven instead by the dynamic and innovative expression of surface design and technique. For example, kimono pattern books dating to the 17th century show how consistent the kimono form has been through to the present moment—while also revealing the evolving history of how each garment was decorated through often dramatic compositions, whether painted, dyed, or embroidered. These bold designs, along with fashionable wearers’ skillful layering of contrasting patterns and colors, appealed to print designers. Large areas of an image in illustrated books and prints were often given over to the print artist’s opulent designs of the kimono’s intricate patterns. As full-color prints were popularized, the artistry expanded, with the works being called nishiki-e, or “brocade pictures,” after the celebrated brocade fabrics of Kyoto.

Among the earliest works in the exhibition are a number of different textile pattern books by or attributed to Hishikawa Moronobu (1618–94), dating to the 1680s. These woodblock-printed books, such as Kimono in a Looking Glass (Kosode no sugatami) from 1682, were popular for their imaginative depictions of people and designs, but also served as the illustrated cat-

alogs for potential buyers to select fabrics, patterns, and adornments in vogue for their own kimonos. The sumptuous kimono designs that appear on the left-hand pages of Kimono in a Looking Glass follow the diagonal sweeping Kanbun style popular at the time the book was published, while figures of women and young men on the right-side pages serve as models to help the reader visualize themselves in the latest fashions. Similarly, Moronobu’s Mirror of Patterns of the Four Seasons for Various Activities (Shiki moyō shorei e-kagami), from the early 1680s, shows kimonos appropriate for each season. In one page spread, two kimono designs on facing pages represent winter and spring—in the kimono on the right-hand a sinuous arare (“hail”) character along the hem of the kimono contrasts with the two large snowflakes on the shoulder. In the kimono on the left-hand wisteria appears behind the Noda character referring to Noda in Osaka, which is famous for viewing wisteria in the late spring.

Two centuries later, these motifs began to be part of Japan’s modernization. The Collection of Weaving Designs (Shokumon ruisan) (1892–93) by an unknown artist includes more than one thousand woven textile patterns grouped according to subject type, such as celestial, animal, floral, and plant. Assembled by the Imperial Museum in Tokyo (today the Tokyo National Museum), the often brightly colored prints reflect related interests in this period both to codify a national visual identity and to create an archive to inspire modern art and design. Similarly, Tsuda Seifū’s (1880–1978) Spirals (Kamonfu) (1900), was the debut work of the then-twenty-year old artist. It reflects the enormously inven-

Turn To **KIMONO** page **A10**



CLUES ACROSS

1. Skateboarders love them
6. Popular sports podcast (abbr.)
9. Former Ohio State great Michael
13. Not dirty
14. Earth goddess (Greek myth.)
15. A Spanish river
16. Pig meat (French)
17. Famed astronomer
18. Floating ice
19. Broadcast
21. Aquatic mammals
22. Some are bath
23. Hip hop trio
24. NY Giants’ #56
25. Small European viper
28. Neither
29. Multiple Tony-winner Rivera
31. Loud noise
33. Second year high schooler
36. “__ in comparison”
38. Golf score
39. Raise
41. Pastas
44. Easily manageable
45. Fathered
46. Pouch
48. Institute legal proceedings against
49. News organization
51. Unruly group of people
52. Fasten or secure
54. Sheets of glass
56. Doubled
60. Foolish person
61. Rooney and Kate are two
62. Small, rich sponge cake
63. Advice or counsel
64. Large wading bird
65. Famed British physicist
66. Narrow ridges (Swedish)
67. Field force unit
68. Lying face downward

CLUES DOWN

1. Proof of purchase (abbr.)
2. Soap ingredient
3. Blackbird
4. Single steps
5. Tin
6. Books have lots of them
7. Made of fermented honey and water
8. You can get it in a bed
9. Room for communal meals
10. Early Syrian kingdom
11. Provokes dry amusement
12. Use with “thou”
14. Mollusk
17. Grain storage units
20. Not a car, not a truck
21. Ooze
23. N. Vietnamese ethnic group
25. Tennis pros group
26. Something that’s not what it’s purported to be
27. E. Indian trees
29. Beloved December holiday
30. Regions
32. Metric unit of length
34. Peter’s last name
35. Beige
37. 18-year period in astronomy
40. Where golfers begin
42. Basketball stat (abbr.)
43. Frocks
47. Soda comes in it
49. On approval
50. Trims by cutting
52. Small finch
53. Language Bura__
55. Nothing
56. Imbecile (British)
57. Tropical Asian plant
58. Abba __, Israeli politician
59. Small freshwater fish
61. Indicates position
65. Data processing



REAL ESTATE TRANSACTIONS

- CHARLTON**
\$449,900, 52 Gillespie Rd, Foskett, Jason, and Foskett, Kelsey, to Tellier, Donald G, and Chenevert, Tara M.
\$390,000, 81 Haggerty Rd, Ninos, Sam S, and Ninos, Aristia V, to Rossi, Michael, and Rossi, Stephanie.
\$380,000, 377 Worcester Rd, RP 3 Management LLC, to Metro Homes RE LLC.
\$352,000, 15 Jennings Dr, Devries, Justina R, and Devries, Kenneth, to Pascarelli, Jon C, and Kimball, Rebecca L.
\$225,000, Boucher Dr #4R, Gunter LLC, to Muniz-Dorosario, Eneias.
\$225,000, Homestead Ave #5R, Gunter LLC, to Muniz-Dorosario, Eneias.
\$220,000, 18 Highfield Rd #B, Leonard, Peter J, to Senseman, Christopher J, and Wzorek, Christine.
\$130,000, T Hall Rd, Burlingame, Nelson B, to Burlingame, Stewart J, and Burlingame, Alana R.

CHARLTON ALMANAC

OPEN TO CLOSE

TOWN HALL (508) 248-2200

Office Hours:
Mondays, Wednesdays, Thursdays
..... 7:30 a.m. to 5:00 p.m.
Tuesdays..... 7:30 a.m. to 7 p.m.
Friday..... Closed

visit www.townofcharlton.net or more information.

Individual offices may vary
PUBLIC LIBRARY (248-0452)
For library hours please check www.charltonlibrary.org

POLICE DEPARTMENT (248-2250)
Monday to Friday..... 8 a.m. to 4 p.m.
For emergencies, dial 911

FIRE DEPARTMENT (248-2299)
Monday to Friday..... 8 a.m. to 4 p.m.

POST OFFICES
Charlton Center Post Office... (800) 275-8777
Charlton City (01508) (800) 275-8777

SCHOOLS
Dudley-Charlton Regional School District
..... (508) 943-6888
Charlton Elementary School
..... (508) 248-7774 or (508) 248-7435
Heritage School (508) 248-4884
Charlton Middle School..... (508) 248-1423
Shepherd Hill Regional High School
..... (508) 943-6700
Bay Path Regional Vocational Technical High School (508) 248-5971 or (508) 987-0326

CHURCH LISTINGS

- **Charlton Federated Church**, 64 Main St., 248-5550, Sunday worship 10:30 a.m. www.fedchurchcharlton.org
- **Charlton Baptist Church**, 50 Hammond Hill Road, 248-4488, www.charltonbaptist.org, Sunday worship 10 a.m.
- **Charlton City United Methodist**, 74 Stafford St. 248-7379, web site: CharltonCityUMC.org Sunday worship and Children’s church 10am
- **St. Joseph’s Church**, 10 H. Putnam Ext, 248-7862, www.stjosephscharlton.com, Saturday Vigil Mass 4:30 p.m., Sunday Mass 8 a.m., Sunday Family Mass 10 a.m., Sunday LifeTEEN Mass 5 p.m., Weekday Mass Monday, Tuesday, Thursday, Friday 8:30 a.m.
- **Hope Christian Fellowship**, 6 Haggerty Road, 248-5144
- **Assemblies of God Southern New England District Headquarters**, Route 20, 248-3771, snedag.org, Office hours Monday-Friday 8:30 a.m. to 4:30 p.m.
- **Lamblight Christian Church**, 37 Main Street - Grange building 1st Floor, Charlton, MA 01507, Rev. Stephen Wade, (774) 452-2393 - Pastor’s Cell, Sunday Service 10:00am. www.visitlamblight.com
- **New Life Fellowship A/G, SNED Chapel**, 307 Sturbridge Road, Rt. 20, Charlton, MA, Sunday Worship 10:00 a.m.

TO PLACE A RETAIL AD:
ADVERTISING REPRESENTATIVE
JUNE SIMAKAUSKAS
(508) 909-4062
jsima@stonebridgepress.news

TO FAX THE CHARLTON VILLAGER:
(508) 764-8015

TO PRINT AN OBITUARY:
E-MAIL:
obits@stonebridgepress.news
CALL: 508-909-4149

SUBSCRIPTION SERVICES:
KERRI PETERSON
(508) 909-4103

TO PLACE A CLASSIFIED AD:
(800) 536-5836
Classifieds@stonebridgepress.news

TO SUBMIT A LETTER TO THE EDITOR:
E-MAIL:
news@stonebridgepress.news

TO SUBMIT CALENDAR OR AROUND OUR TOWNS ITEMS:
E-MAIL:
news@stonebridgepress.news

OFFICE HOURS:
MONDAY THROUGH FRIDAY
8:30AM-4:30PM

VILLAGER STAFF DIRECTORY

EDITOR
BRENDAN BERUBE
(508) 909-4106
news@stonebridgepress.news

SPORTS EDITOR
NICK ETHIER
(508) 909-4133
nick@stonebridgepress.news

STONEBRIDGE PRESS PHOTO POLICY
As a community oriented family of newspapers, Stonebridge Press welcomes photos from readers, business owners, and other outside sources for publication in any of its titles. Any photos submitted for publication become the property of Stonebridge Press, and may be displayed in our newspapers, as well as on our Web site. They may also be made available for resale, with any proceeds going to Stonebridge Press and/or the photo re-print vendor.



Fall Home & Auto

*This section reaches 47,000 households
in 7 Massachusetts newspapers.*

*Call 508-764-4325
or email ads@stonebridgepress.news
for more information*

AUTO BODY / REPAIRS

KEARNS
COLLISION REPAIR

Since 1969
Always Going The Extra Mile For Our Customers

Free Written Estimates • Damage Appraisal
Color Matching Specialists • Rental Car Services
Warranted Work & Repairs
Diagnostics • A/C Repair
Tune Ups & Engine Repair
Brakes • Alternators • Starters • ABS
Alignments • Tires...and more

Major Insurance Referral Shop
Honoring All Insurance Estimates

1734 Providence Road (Rt 122)
Northbridge, MA 01534
Ph: 508-234-5211 • Fax: 508-234-2231
www.kearnscollision.com
Fully Certified • RS# 2678



BEST WINDOW COMPANY

KUBALA
HOME IMPROVEMENT
The Door and Window Experts

MACSL100114 | MAHic150118 | CTHic0619712

Award Winning
High Performance
Windows & Doors

100% FINANCING
AVAILABLE | Lifetime
Warranty

508-784-1550

ACCREDITED
BUSINESS A+ f

BUILDER

Todd A. Ethier
TAE
B·U·I·L·D·E·R
INCORPORATED

Remodeling Expert

- ◆ FINISHED BASEMENTS
- ◆ ADDITIONS ◆ GARAGES
- ◆ SIDING ◆ ROOFING ◆ DECKS
- ◆ WINDOWS ◆ DOORS
- ◆ KITCHEN ◆ BATHS

Quality Building Since 1985
Licensed & Insured
508-764-2293 ◆ 774-230-3967

*Advertise on this page
for one low price!
Get 7 papers.
Call 508-764-4325*

- Spencer New Leader
- Webster Times
- Sturbridge Villager
- Auburn News
- Charlton Villager
- Blackstone Valley Tribune
- Southbridge News

Granite & Marble

SHREWSBURY
MARBLE & GRANITE, INC.

Buy Factory Direct & Save HOLIDAY SALE

50 COLORS • \$39 per sq. ft. Installed
(40 sq. ft. or more) Cannot be combined with other offers.

Biggest Selection of Marble,
Granite & Quartz of ANY Fabrication Shop
300 Colors To Choose From
Please call for appointment 508-523-3769

508-842-9800 • shrewsburymarbleandgranite.com
620 Boston Turnpike (Rte 9 E), Shrewsbury, MA
(1/4 mi. east of Home Depot - Big Blue Bldg)
Mon-Thurs 8-5, Fri & Sat & 9-4

Oil & Propane

AMERICAN DISCOUNT OIL & PROPANE

Need propane or oil right away?
Call American today!

OIL 10¢ Off **PROPANE 20¢ Off**
PER GALLON (125 GAL MIN) PER GALLON ON YOUR NEXT FILL UP (MIN 75 GAL)

With coupon. One coupon per customer. Exp. 12/31/20. Cannot be combined with any other offer or on previous purchases or fuel assistance program.

Order online
Americandiscountoil.com
413-289-9428
1182 Park St., Palmer, MA 01069

Snow & Ice Control

BRIAN'S TRUCK EQUIPMENT INC.

FISHER **THE PLOWMAN**

FISHER SNOW & ICE CONTROL
Authorized Distributor

508-867-6500
46 Quaboag St., Brookfield, MA



WASTE REMOVAL

TOM BERKOWITZ
~Est. 1980~

TRUCKING INC.

- Residential • Commercial
- Hauling • Recycling
- Demolition • Transfer Station

Northbridge, MA
508-234-2920
tomberkowitztruckinginc.com

CHIMNEYS

CHIMNEY CLEANINGS ONLY \$99

ALL KINDS OF
MASONRY &
CONCRETE WORK

New & Repairs, Repointing,
Rebuilding, Re-lining,
Waterproofing, Foundation
& Chimney Repair, New
& Stair Repair, Concrete
Walkways, Stonewalls,
New Roofs, Construction
& Carpentry.

Need to get it done?
Call me!

-FREE Estimates-
Quality Chimney
(508)752-1003

ELECTRICIAN

ALDEN
Electrical Contractors, Inc.
LICENSED ELECTRICIAN

New Construction
Remodelling
Kitchen & Bath
Service Updates

W. Brookfield, MA
1.774.230.9606
Talden1987@gmail.com

Fully Insured
Accepts credit card
payments & free online
bank transfers
Licenses:
MA-13705-21777A,
NH-13932M, RI-B013781

Electrician

BRIAN WOOD

Master Electrician
Residential • Commercial
o: 508.764.3925
c: 508-505-0111
35 Years of Experience
Lic#15885A | 29931E
Fully insured
I specialize in:
New Construction
Renovations
Pools and Hot tubs
Lighting (int. & ext.)
Repairs and Maintenance
Electrical Panel upgrades
Bpwelec@gmail.com
Facebook:
Brian Wood Electrician

ELECTRICIAN

TNT ELECTRICAL SERVICES

Timothy N Tripp
Licensed
Electrician

67 Hillcrest Drive
Southbridge, MA
01550
508.909.5114
774.601.3107
Tntelectricalserviceinc@gmail.com
MA#100257JR
NH#17425J

Handyman

No Job Too Small
Home Improvement

-Insured-
MA Reg #174661

- General Carpentry
- Laminated Floors
- Remodeling
- Kitchen, Bath & Cellar
- Painting
- Handyman Services
- Floor Leveling
- Power Washing and MORE!

See Our Work Online
nojobtoosmallhomeimprovement.com
Tel. 508.414.7792
Sturbridge, MA

HANDYMAN

MAIN STREET SERVICES

Handyman
Drain Clearing • Plumbing
Carpentry
Pressure Washing
Small Jobs to Total
Renovations

*If we don't do it,
you don't need it done.*

Tradesman for over 40 yrs.

Senior Citizen (65+)
DISCOUNT

Call Rich for your
next project
508.963.1191

HEATING

PELLET STOVE

REPAIR
INSTALL

VENTING IS
ESSENTIAL

CHIMNEY & FIREPLACE

MA CLS #094542
MA HIC #144152
508-248-3733
TOM CIRAS

PAINTING

Scott Bernard's PRECISION PAINTERS

*Finest
Craftsmanship
Since 1979*

Interior-Exterior
Paints, Stains,
Wallpaper and
Fine Faux Finishes

*Satisfaction
Guaranteed*

Free Estimates
774.452.0321



Pest Control

ACCURATE PEST CONTROL

Full Pest Control
Services

Over 28 yrs.
experience

Reasonable Rates
Owner Operated

508-757-8078
Ask for
David or Jason
Hight
Auburn MA

Plastering

Glenn LeBlanc Plastering

Specializing in
small
plastering jobs;
ceilings,
additions,
patchwork and
board hanging

Over 30 Years
Experience.
3rd generation.
CALL
508-612-9573

PLUMBING

JOHN DALY Plumbing

Water heaters, Faucets,
Toilets, New pex water piping,
Outside hose connections
replaced or added,
Dishwashers, Garbage
disposals, Water filters,
Tub & shower valves,
Any repair or
replacement needed.

Buy your own fixtures &
faucets, or I will supply.
Serving all of
Worcester County
Lic.#MPL-21763
Since 1988
Call John 508.304.7816

We are home owners'
plumbers!
jdralnman714@aol.com

Roofing

SAUNDERS & SONS ROOFING

When you need a roof,
hire a roofing company,
that's what we do!

Call Bill Toll-Free
1-866-961-Roof
508-765-0100

Lifetime material warranty
& 25 yr. labor warranty
available

MA Reg #153955
CSL #095459
CT-HIC #0638641
Fully Insured,
Free Estimates

Family Owned and Operated
Now Accepting All
Major Credit Cards

ACCREDITED
BUSINESS A+ f

ROOFING

David Barbale ROOFING

Roofing/Gutters
Repair Work

Fully Licensed
and Insured

MA LIC #CS069127
MA HIC LIC #1079721
INS. #CAC032585

C: 508-397-6709
O: 508-248-6709
davidbarbale.com

ROOFING

GUARANTEED Roofing & Building Maintenance LLC

Roofing, Siding,
Gutter and
Gutter Cleaning

Contact:
Daniel Truax
508-450-7472
gbmaintco.com

Senior Citizen Discount
Credit Cards Accepted
Over 30 years of satisfied
customers
Fully Insured - Free Estimates

A+ Rating BBB
MA HIC Lic #146620
MA CSL #099487

This section reaches 47,000 households in 7 Massachusetts newspapers.

Legislators offer help in securing unemployment benefits

BY KEVIN FLANDERS
STAFF WRITER

REGION – As residents continue to grapple with an overwhelmed unemployment assistance system, local legislators are working hard to help with navigation.

Area state representatives and senators have seen a recent increase in calls and emails from residents who haven't received an unemployment check in months. Others have gotten notices from the Mass. Department of Unemployment Assistance (DUA) demanding repayment of monies previously approved during the pandemic.

Even in normal times, local officials receive a steady flow of calls related to unemployment issues. But since September, an influx of desperate residents have called with complaints that their benefits were either suspended or retracted as part of a DUA crackdown on fraudulent claims.

"They have had a big issue with fraud," said State Rep. Peter Durant, of Spencer. "Several people have had their identities stolen, and the DUA had to take precautions to investigate.

Of course, that hurts a lot of the people with legitimate claims."

Comprehensive DUA investigations of fraud have led to a significant backlog of unemployment claims that need to be processed. Additionally, many residents' claims have had missing information or errors, which caused DUA adjudicators to flag them as potentially fraudulent. These residents will need to resubmit their claims with the proper documentation in order to receive benefits.

Moreover, confusion has surrounded the difference between "pandemic unemployment assistance" and general unemployment benefits. Thousands of residents have erroneously filed under the wrong category, officials said. To be eligible for pandemic unemployment assistance, residents must demonstrate that they lost their jobs as a direct result of the COVID-19 crisis.

Meanwhile, scammers continue to flood the system in search of ways to take advantage of the confusion.

"There have been a considerable number of fraudulent applications to unemployment, which has resulted in a delay due to increased scrutiny of

all applicants," said Sen. Anne Gobi, of Spencer. "I receive a number of requests daily from people who are having trouble opening a claim or getting their funds from an already open and approved case."

Many of the fraudulent claims are the result of autonomous software programs. During the weekend of Nov. 14-15, approximately 31,000 unemployment claims were filed statewide, officials said. DUA staffers will need to pore over every claim to ensure its legitimacy, as well as the thousands of claims that were submitted in the ensuing weeks.

Over the last several months, local officials have helped serve as intermediaries between desperate residents and overwhelmed DUA officials. With Christmas and the winter season fast approaching, many residents can't wait much longer for their claims to be processed. Some families are already struggling to figure out how they'll provide food and heat their homes this winter.

Area leaders continue to work long hours to help secure relief as quickly as possible.

"We have some good contacts at the

DUA, and we have helped advocate and get things moved along for people," Durant said. "The entire process can be very confusing for people. It's especially difficult when a person's business closed and there is no one to verify that an employee worked there."

Officials and residents alike are eager for the distribution of vaccines over the next several months. This will allow residents to feel safe about restarting their businesses, interviewing for new jobs, or moving on to the next chapters in their careers.

"Once these vaccines get rolled out, we will start getting more people back to work," Durant said.

For now, residents are urged to have all of their documents organized when filing claims or appealing DUA repayment orders. It is important to save all communications from employers related to COVID-19 layoffs or closures.

Local legislators are also assisting residents who have been scammed or had their identities stolen.

"Anyone who is the victim of a fraudulent claim – please let me know so we can notify unemployment," Gobi said.

DA's office assists in combating opioid crisis

BY KEVIN FLANDERS
STAFF WRITER

REGION – The Worcester County District Attorney's Office will use federal grant funding to assist police departments in combating the opioid crisis.

The federal Department of Justice recently awarded the Worcester County District Attorney's Office a \$1.2 million grant to help facilitate outreach and recovery efforts. District Attorney Joseph Early, Jr., will team up with local police departments to support several grant-funded programs.

Among other projects, the federal grant monies will fund recovery coaches who will respond with police personnel and offer services after an overdose. These critical measures can help start victims down the path to treatment and recovery, police said, rather than allow them to be cycled back through the same destructive process.

Police in all 60 of Worcester County's cities and towns began using the Critical Incident Management System (CIMS) earlier this year to track overdose incidents. The

goal of the system isn't to track data for the purpose of arresting people, but rather to maximize assistance opportunities, police said.

Law enforcement officials discovered at the start of the opioid crisis that it is impossible to solve the problem simply through the criminal justice system. A broader support system of counselors, clinicians, recovery groups, and family advocates is necessary, officials said.

Federal and state grant funding will continue to pave the way to recovery for many des-

perate residents and families.

"We're glad to have been awarded this grant so we can help support our police partners in their response to the opioid epidemic," District Attorney Early said. "When we implemented CIMS, our goal was to respond to every overdose incident and help people get access to services. This grant will ensure that overdose victims in every community receive help getting into treatment and on the path to recovery."

While many area police departments already have

Turn To OPIOID page A10



FAMILY DINING & GIFT GUIDE

Visit these fine local establishments for great gifts, food, beverages & take-out too!





To advertise on this page, contact June at jsima@stonebridgepress.news or 508-909-4062

We are using our Five Dining Rooms to keep our guests safe and socially distant.

Spencer Country Inn



Buy Entree Get 1 1/2 price
(dine-in only) Cannot be used on holidays or private parties
With this ad. Exp 1/31/21

Reservations accepted. Nightly dinner specials.

SUNDAY BRUNCH 10am-1pm
All You Can Eat \$15.95 (plus tax & gratuity)

Fish N' Chips To-Go ~ Fridays Only \$11.95

500 Main St., Spencer, MA
508-885-9036
www.spencercountryinn.com

HOURS
Lunch: Thur, Fri, Sat 11:30-2:00
Dinner: Thur, Fri, Sat 5:00-Close
Sun. Brunch: 10am-1pm

GIFT CERTIFICATES

~ Function Rooms 10-250 Guests ~

To advertise on this page call us today at 508-909-4126



CHARLIE'S

Diner • Bar • Grill • Functions

WE ARE RE-OPENED FOR INDOOR DINING!

BREAKFAST • LUNCH • DINNER

Friday & Saturday Night After 5:00

Lobster Ravioli Alfredo

Prime Rib

Full Menu - Take out still available

5 Meadow Rd., Spencer, MA 01562

Gift Cards 508-885-4033

www.charliesdiner.com

Hours: Sun, Mon & Wed 8-8 • Thurs, Fri, Sat 8-9

Merry Christmas

Order your Christmas Dinner

Instructions available for heating! • We will be closed Christmas Day

Double Smoked Ham: Jeremy's own blend of spices smoked onto a delicious baked ham. Served with his cheesy potatoes and green bean casserole. **\$25/pp**

Oven Roasted Turkey: Served with house made stuffing, mashed potatoes, gravy and green bean casserole. **\$25/pp**

Prime Rib: Cooked to rare so you can finish it to your liking. Served with Jeremy's cheesy potatoes and green bean casserole. **\$30/pp**

All come with rolls, butter and dessert

Please order before 2 PM Monday December 21, 2020 in order for us to have them ready for you to pick up no later than 2 PM Wednesday Night

E.B. Flatts

Rte 9 E. Brookfield • 508-867-6643

Breakfast & Lunch Daily • Dinners - Thurs, Fri, Sat

Shop Local this Holiday Season!

Free gift wrapping, and select items discounted 25-50%!

Let Cormiers be your personal shoppers.

Stop in or text us at 508-885-3385 soon for the best selection!





Cormier Jewelers & ART GALLERY

A Family Business Since 1949

136 Main Street Spencer

508-885-3385

cormierspencer.com



DECEMBER 2020						
1	2	3	4	5	6	7
CLOSED	CLOSED	OPEN 10-5	OPEN 10-5	OPEN 10-5	OPEN 10-5	OPEN 10-4
CLOSED	CLOSED	OPEN 10-5	OPEN 10-5	OPEN 10-5	OPEN 10-5	OPEN 10-5
OPEN 10-4	OPEN 10-7	OPEN 10-7	OPEN 10-7	OPEN 10-3	CLOSED	TBD
CLOSED	CLOSED					



Salem Cross INN

RESTAURANT & TAVERN

260 West Main Street, West Brookfield, MA 01585

Experience Salem Cross Inn...

history, charm, elegance, and culinary delights

Dine with us or Take Out. Reservations required if dining in

Give the Gift of history, charm, elegance and culinary delights with a Gift Certificate to Salem Cross Inn!

Purchase in person or online

For more info visit www.salemcrossinn.com (508)867-2345

Hours: Thursday, Friday & Saturday from 4:00-8:00; Sunday noon-6:00 pm

Charlton resident receives dual Master’s degree from Grand Canyon University

CHARLTON — Sarah Grant of Charlton, adjunct faculty at Bay Path Practical Nursing Academy, recently received dual degrees: Master of Business Administration and Master of Science in Nursing: Nursing Leadership in Healthcare Setting recently from the Grand Canyon University.

Grant is a recent addition to the Bay Path Practical Nursing Academy Clinical Faculty.

“My nursing academic journey began with a Practical Nursing Certificate

in 2007 from Massachusetts Bay Community College,” said Grant.

Becoming an LPN expanded her world view and provided her not only with the knowledge, inspiration, and discipline to seek academic progression but also to have a challenging and meaningful professional life. She looks back at her academic progression with gratitude. She completed her Associate degree in nursing at Quinsigamond Community College in 2015 and obtained her license as a Registered

Nurse. She then completed her Bachelor of Science in Nursing at Grand Canyon University in 2017. As an undergraduate, her clinical affiliations included Saint Vincent Hospital in Worcester, Milford Hospital in Milford, Harrington Hospital in Southbridge, and in the Worcester Public School System. Her previous employment includes Hospice of Western & Central Massachusetts as an RN Case Manager, Wingate at Worcester as Nurse Supervisor, and Parson Hills Nursing as Staff Nurse.

Grant is serving her first term as a Clinical Facilitator at Bay Path Practical Nursing. Already, practical nursing students are glowing with comments such as “Professor Grant is an excellent instructor. She makes sure you understand very well. I remember everything she taught us.” And “My clinical facilitator, Professor Grant, is such an amazing instructor. Am so thankful to have her.”



Community Connection



Talbat Embroidery Shop
Custom Embroidery & Heat Transfer

We are here for you!

NEW LOCATION:
1009 Lebanon Hill Rd., Southbridge 508-764-0555

SHOP LOCAL

COMMUNITY SPECIAL
This size ad for only \$35/wk for 14 weeks
Receive A Free 1/2 Page Ad

CALL JUNE AT 508-909-4062
FOR MORE INFORMATION

Charlton Oil Company Propane
508-248-9797

Don't Pay Too Much for Propane

PROPANE	PRICE PER GAL.	Tanks Filled to 80%
75-150	\$2.20	
150-300	\$1.85	
300-500	\$1.65	Driver Discretion
500 PLUS... CALL OFFICE		

DON'T PAY TOO MUCH FOR OIL!

- Monday price 12/7/20 was **\$1.83** per gallon*
100 gallon minimum
- Call for the most up to date daily price or visit us at www.charltonoil.com

"Call Us First!"
*prices subject to change



Morin JEWELERS
Fine Jewelry & Gifts
The Jewelry store where you buy with confidence

WE BUY GOLD

Specializing in Custom Designs
All types of Jewelry Repairs

MASTER JEWELERS™
BRILLIANCE YOU DESERVE®

409 Main St. Southbridge, MA
morinjewelers.com • 508-764-7250
Located at CVS Plaza

MICKNUCK'S FRESH MARKET PLACE

570 MAIN STREET • RT. 20 • FISKDALE, MA
TEL: 508-347-0116 • FAX: 508-347-6985

SPECIALS GOOD 12/14- 12/20

3LB BAG CLEMENTINES \$3.99 ea.	BOAR'S HEAD BEECHWOOD HAM \$7.99 lb.	IMPORTED GREEN ASPARAGUS \$2.99 lb.
5LB BAG RED POTATOES \$2.49 ea.	CERTIFIED ANGUS SIRLOIN STEAKS \$5.99 lb.	GOLDEN RIPE PINEAPPLES \$1.99 ea.

Mon. - Fri. 8:30 - 7:00 • Sat. & Sun. 8:30 - 6:00
We reserve the right to limit quantities

Hearthstone Market & Catering
A Division of Annie's Country Kitchen

Grab 'N' Go Home-style Lunch, Dinner, and Tasty Treats
Catering Available!

Rt. 20, 630 Main Street, Sturbridge, MA 01566
508-347-7077
Open 7 Days a Week • 11am-7pm
hearthstonemarket1@gmail.com
hearthstonemarketandcatering.com

Merry Christmas from our family to yours.





Morin
Fine Jewelry & Gifts


MASTER JEWELERS™
BRILLIANCE YOU DESERVE®

409 Main St. Southbridge, MA Located in CVS Plaza
morinjewelers.com • 508-764-7250

*The Brilliance, Sparkle and Colors of the Holidays...
Waiting for you.*

ONLINE SHOPPING NOW AVAILABLE!





25 Elm St., Southbridge, MA 01550
Telephone (800) 367-9898
Fax (508) 764-8015
www.StonebridgePress.com

FRANK G. CHILINSKI
PRESIDENT/PUBLISHER

BRENDAN BERUBE
EDITOR

The struggle against Old Man Winter

The first big nor’easter of the season has come and gone, leaving us with anywhere from three to nine inches of snow (or more in some cases), depending on where you live. As with most things, we like to think about how our ancestors handled certain situations. It was during a snowy drive last winter that we became more grateful for studded snow tires and heat, after thinking about how those before us dealt with travel during snowstorms.

During the winter of 1717, a storm dumped four feet of snow, creating snowdrifts of up to 25 feet. Passing through the snow covered roads was too much for a postman who traded his horse for a pair of snowshoes. Objects similar to skis were attached to carriages as a means of winter transportation.

Streets had to be passable for wood and food deliveries. When the roads were not passable townspeople would gather together in large groups and dig out a path. The snow was placed into the back of a horse-drawn cart by gangs of men and driven to the closest river to be dumped. Salt was also used on streets, but many people complained because it ruined their shoes and clothes.

Fast forward to 1840, when the first snow plow patent came to be. It wasn’t until 1862 that the first snowplow was put into use. The plow was attached to a cart and pulled by a team of horses. Soon after, many cities began to use the horse-drawn snowplow.

Typically the use of the horse-drawn plow was only used to clear main streets, leaving side streets and sidewalks snowed in by large piles often blocking entrances to businesses. Many business owners actually brought lawsuits against the plowing companies as a result because their customers could not gain access to the storefronts.

The solution to that conundrum, was the hiring of snow shovelers to accompany the plow. The blizzard of 1888, however, was too much for the “modernized” plow, leaving many people trapped inside their homes. This emergency was the catalyst cities needed to begin coming up with a better plan for snow removal. One idea was to stay on top of the storm as it started, instead of waiting for it to end. Different men driving the plows were assigned to certain neighborhoods as well.

The invention of the automobile brought with it a crutch and a new possibility as far as snow removal went. The crutch being that an entirely new method needed to be engineered and put into use. In New York in 1913, a dump truck could be seen on city streets. Seven years later the first snow loader, came on to the scene. It had a big scoop with a conveyor belt. The snow would go into the scoop via the belt, then dumped into the back of the truck. From there, off to the river it went.

It wasn’t until 1959 when the weather was able to be predicted more accurately, allowing towns and cities to better prepare for any incoming storms.

Reading old diaries of our New England ancestors gives the perfect window as to what it was like to experience a bitter cold winter, prior to modern practices.

As literary critic Van Wyck Brooks wrote in “The Flowering of New England, 1815-1865,” “All praise to winter, then, was Henry’s feeling. Let others have their sultry luxuries. How full of creative genius was the air in which these snow-crystals were generated. He could hardly have marveled more if real stars had fallen and lodged on his coat. What a world to live in, where myriads of these little discs, so beautiful to the most prying eye, were whirled down on every traveler’s coat, on the restless squirrel’s fur and on the far-stretching fields and forests, the wooded dells and mountain-tops,—these glorious spangles, the sweepings of heaven’s floor.”



GOOD NEWS

OPINION

VIEWS AND COMMENTARY FROM CHARLTON, CHARLTON CITY, CHARLTON DEPOT AND BEYOND

Readers Share Timely Tips!

As we countdown to the festive holidays, readers took time from the hustle and bustle of the season to share their favorite tips and tricks. From creative COVID related strategies to sparking sentimental memories, the following hints from area readers are sure to please!

Bringing extended family to the holiday table without literally having them at the table this year can be a reality, thanks to this reader’s present project:

It looks like the Covid virus is going to be here for the holidays. Many families will have to skip the traditional get together where everyone looks forward to homemade food. I am trying something different this year. Because we won’t be able to share a favorite recipe at the table, I am creating a family cook book. I have emailed family and extended family members requesting that they send me one or more of their favorite recipes. I will then put together a family favorite cook book. They will then receive a copy at Christmas. Stay safe, and Happy Holidays. Chris Griffin
Whitinsville, MA

Feeding baby his first finger foods can be a challenge – here’s an easy way to up the odds your little one can easily “pick up” the healthy foods:

My 10 month old grandson is loving finger foods, and banana is a favorite. Picking up chunks of banana can be slippery business, though. My daughter found that sprinkling the banana pieces with powdered peanut butter makes the task simple, and my grandson LOVES the combination!!! Also gets more protein into the little guy at the same time. Janine Cortesa
Uxbridge MA

This clever reader discovered a way to stretch the budget by increasing the lifespan of disposable face masks:

Disposable facial masks are expensive. Cloth are great but here are some tips for safely extending the life of the disposable types. I experimented, and mine did hold up to at least one wash in the washer and being dried in the dryer. I figured it was worth a try, and the worst thing would be that there would be lint all over that load of clothes and I would need to re-do the laundry. However, mostly I soak both the disposables and cloth masks in a stainless steel bowl with boiling or very hot water to which some drops of essential oils such as tea tree or lavender as well as a capful of rubbing alcohol has been added. Those particular oils hold some anti-bacterial properties. After an hours soak thoroughly rinse, wring out and hang indoors or outside preferably in a sunny spot to air dry. Hope this helps stretch the budget! Annie Wuelfing
East Brookfield MA

This reader has long promoted the virtues of gifting nostalgic presents!

Life in balance

I’m not a very athletic guy. I’ve mentioned this before, but we used to be a skiing family. We’d head north to the slopes several times a year and occasionally out west to the Rockies. I never really enjoyed skiing, but Arlene and the kids did, so off we’d go.

I think much about life can be learned staring down a hill from eight-thousand feet while standing on two skis. The first thing that comes to mind is that it was unnatural. I don’t think we were meant to slide down a hill with two planks strapped to our feet.

The next and most prominent thought was that it was dangerous. On Vail Mountain one afternoon, I counted eleven skiers being towed down on sleds by the ski patrol. Later in the same day, I watched a teenager fall off a ski lift.

Why would I submit my family to such risk? I guess the answer is that they loved it ... and you can’t live life in a protective bubble. Other than damage to my self-esteem and confidence, we never suffered a major ski injury.

I did learn a valuable life lesson while on skis. As I said, I never felt comfortable. I could be skiing perfectly down the slopes, then get a sudden sense of fear, believing I was going to fall and inflict serious injury. When that happened, and it always did, I’d purposely fall. I realized I was doing it. My oldest son asked, why are you falling so much?



TAKE THE HINT
KAREN TRAINOR

Here are two ideas she shares:

I started coin collections for my niece and nephew, which I continue to add to at holiday time. I began by giving them Lincoln Pennies at age 1 with books, and each year at Christmas I give them another few coins of years of birthdates of both sets of grandparents, aunts, uncles and more as keepsakes. Hopeful they will collect coins like their grandpa or at least they have a second book with the genealogy recorded and real coins from their biological grandfather, aunt and uncle.

I am trying to get cousins together again after Covid, and last year I paid to get old 8mm family movies on disc and had four reunions across the U.S. with cousins, copies for all.

My point is, to share stories now, take phone photos of old 35mm, 110, 126 and historic photos and share with family on Facebook etc. so they can keep them for their genealogy folders and suggest to them to do so. “Seize the moment,” in the words of Robin Williams!

Who knew? This reader’s slow cooker method eliminates the hassle of peeling and cutting hard-as-a-rock butternut squash!

Here is my tip. Put the whole butternut squash right in the crockpot, add just a little water and cook it until soft. It comes out so good, I can even eat the skin. I wish my father knew this on all those holidays! Just scoop out the seeds in the middle, no peeling needed. Cathy Patchen
North Brookfield, MA

Prize Winner
Congratulations to Chris Griffin of Whitinsville, MA, whose name was drawn for Dinner for Two at the Publick House in Sturbridge.

Chris submitted the family recipe book idea above.

Win Dinner for Two at the Publick House

Your tips can win you a great dinner for two at the historic Publick House Historic Inn in Sturbridge! Simply send in a hint to be entered into a random drawing. One winner per month will win a fabulous three course dinner for two at the renowned restaurant, located on Route 131 across the town common in historic Sturbridge. Because I’m in the business of dispensing tips, not inventing them (although I can take credit for some), I’m counting on you readers out there to share your best helpful hints!

Do you have a helpful hint or handy tip that has worked for you? Do you have a question regarding household or garden matters? If so, why not share them with readers of Stonebridge Press newspapers? Send questions and/or hints to: Take the Hint!, C/o the Southbridge Evening News, PO Box 90; Southbridge, MA 01550. Or email KDRR@aol.com. Hints are entered into a drawing for dinner for two at the historic Publick House Inn.

I shrugged it off, but his question stuck in my head and I pondered it the rest of the day. Then in the dark of night, I realized what I was doing.

As I said, I could be coming perfectly down the hill, get a sudden stroke of fear and purposely fall. I believe my lack of comfortability and confidence told me I was going to fall and harm myself, so instead, I decided to plan my fall because it was something I could control. I was sabotaging my own success on skis. Rather than planning to succeed, I did the opposite.

I’m preparing to speak to my local chamber of commerce this month. In my thoughts about why businesses and individuals succeed and fail, I think about my purposeful failure on the slopes. I didn’t envision making it to the bottom of the hill without falling. Unconsciously, I planned, executed, and succeeded at my own failure.

I wonder how many people, organizations and businesses do the same thing. How many marriages begin and end the same way? Or how many students flunk out of college because they can’t picture themselves graduating? I think the true numbers would shock us all. I believe most failure is subconsciously planned and executed.

The question then is, why don’t we picture ourselves making it to the bot-

Turn To **MOORE** page **A11**

Consider these year-end financial moves



FINANCIAL FOCUS
JEFF BURDICK

We’re nearing the end of 2020 – and for many of us, it will be a relief to turn the calendar page on this challenging year. However, we’ve still got a few weeks left, which means you have time to make some year-end financial moves that may work in your favor.

Here are a few suggestions:

Add to your IRA. For the 2020 tax year, you can put in up to \$6,000 to your traditional or Roth IRA, or \$7,000 if you’re 50 or older. If you haven’t reached this limit, consider adding some money. You actually have until April 15, 2021, to contribute to your IRA for 2020, but the sooner you put the money in, the quicker it can go to work for you. Plus, if you have to pay taxes in April, you’ll be less likely to contribute to your IRA then.

Make an extra 401(k) payment. If it’s allowed by your employer, put in a little extra to your 401(k) or similar retirement plan. And if your salary goes up next year, increase your regular contributions.

See your tax advisor. It’s possible that you could improve your tax situation by making some investment-related moves. For example, if you sold some investments whose value has increased, you could incur capital gains taxes. To offset these gains, you could sell other investments that have lost value, assuming these investments are no longer essential to your financial strategy. Your tax advisor can evaluate this type of move, along with others, to determine those that may be appropriate for your situation.

Review your investment mix. As you consider your portfolio, think about the events of these past 12 months and how you responded to them. When COVID-19 hit early in the year, and the financial markets plunged, did you find yourself worrying constantly about the losses you were taking, even though they were just on “paper” at that point? Did you even sell investments to “cut your losses” without waiting for a market recovery? If so, you might want to consult with a financial professional to determine if your investment mix is still appropriate for your goals and risk tolerance, or if you need to make some changes.

Evaluate your need for retirement plan withdrawals. If you are 72 or older, you must start taking withdrawals – technically called required minimum distributions, or RMDs – from your traditional IRA and your 401(k) or similar retirement plan. Typically, you must take these RMDs by December 31 every year. However, the Coronavirus Aid, Relief, and Economic Stimulus (CARES) Act suspended, or waived, all RMDs due in 2020. If you’re in this age group, but you don’t need the money, you can let your retirement accounts continue growing on a tax-deferred basis.

Think about the future. Are you saving enough for your children’s college education? Are you still on track toward the retirement lifestyle you’ve envisioned? Or have your retirement plans changed as a result of the pandemic? All of these issues can affect your investment strategies, so you’ll want to think carefully about what decisions you may need to make.

Looking back – and ahead – can help you make the moves to end 2020 on a positive note and start 2021 on the right foot.

This article was written by Edward Jones for use by your local Edward Jones Financial Advisor. Please contact Jeff Burdick, your local Edward Jones Advisor in Sturbridge at 508-347-1420 or jeff.burdick@edwardjones.com.

TOY DRIVE

continued from page **A1**

or so then we really try to do a big push for this final weekend. The Marines run the Toys for Tots in Worcester County. This year it’s a little different. We’re taking them to Worcester a few times and have already donated a carload. After today we’ll probably have at least one more. They’re the ones who distribute the toys through Worcester County,” Gaylord said.

In 2019 Toys for Tots of Worcester County donated nearly 42,300 toys to 14,385 children. To donate or apply for toys, visit www.toysfortots.org.

On the hunt



THE GREAT
OUTDOORS
.....
RALPH
TRUE

Deer hunting in Massachusetts has been great for some, and others not so good. It depends on who you ask. With all check stations closed and deer being registered online this year because of Covid, it will be a while before we can get some of the harvest figures. It seems the younger generation is doing extremely well harvesting some real impressive bucks locally.

A Milford group of hunters harvested a good number of big bucks last week, while others struggled to bring home a couple of small does. Some hunters were blaming the high harvest of deer to archers prior to the shotgun season. Archers did harvest the highest number of deer in the last few years, as stated in a previous column.

The shotgun deer season will end this Saturday, followed by Black powder season, which opens this coming Monday, Dec. 14 and runs through the end of the month. The ice crusted woods made it a bit noisy for hunters trying to sneak up on deer during the start of the second week of deer hunting, but warmer temperatures for the last three days should help shotgunners finish up their season on a high note. Hunters that worked the woods with a couple

of buddies, did the best, as deer were pushed to waiting gunners on well-traveled runs.

Primitive arms season is a favorite method to hunt deer for many hunters. The accuracy of the rifled barrels is amazing, and are capable of hitting their target at 100 yards or more in the right hands. Loading the gun is also extremely easy with the new Power Belt Bullets, and the 50 grain pellets, that are simply dropped down the barrel, prior to ram rodding the bullet down the barrel. Some hunters can reload as fast as 15 seconds.

A lot better than the old ball and patch, which for years allowed for a smooth bore gun only in Massachusetts! Changing hunting laws in Mass. is like pulling teeth with legislators! The Sunday hunting bill and the Crossbow bill needs to be passed. Now that elections are just about over, sportsmen will again try to convince Massachusetts Fish & Wildlife that these bills need to be addressed and passed this year.

Trout fishing anglers are still fishing numerous bodies of water from their boats, but they are hopeful that some cold weather is on the horizon. It has been a few years now that many lakes and ponds in the area, have provided very little ice fishing, because of unsafe ice. With the darn pandemic giving anglers a touch of cabin fever, a little bit of ice fishing could be just what the doctor ordered. Watching TV every day makes it hard to concentrate on everyday life that we are accustomed to. When the vaccine is available, I will be in line.

This coming spring may not see



Photo Courtesy

This week's picture shows this writer's two dogs, Molly & Twig.

sportsmen's shows open if we do not get the pandemic under control. That would be a shame! Thousands of sportsmen attend the shows annually, pumping thousands of dollars into the economy, not to mention seeing old friends and telling lies about their fishing and hunting experiences in 2020.

Shopping for Christmas gifts this year is being done mostly online, which is a good idea. Purchasing a hunting or

fishing license is now available online, and is one of the best things you can give any sportsmen. Gift certificates are also a great gift, when purchased at a sportsmen or sportswoman's favorite store.

Be sure to social distance and wear a mask.

Take A Kid Fishing & Keep Them Rods Bending!

Grow your own herbal centerpiece for the holidays



GARDEN
MOMENTS
.....
MELINDA
MYERS

Dress up the table and your holiday meals with a centerpiece of fresh herbs. You and your family will enjoy snipping a few fresh sprigs to season your meal to your own taste.

Purchase plants so they will be ready to harvest for the holidays. Many garden centers now carry herb plants year-round and some grocery stores sell herb plants in their produce department.

Include herbs your family likes and those that complement your menu. Grow plants in individual containers or plant several in one larger decorative pot. Select a container with drainage holes and one that complements your table setting.

Double pot plants when using a decorative contain-

er that lacks drainage holes. Plant herbs in a smaller pot with drainage holes. You can set several individual pots in a larger container. Place pebbles in the bottom of the decorative pot. These elevate the inner pots above any excess water that collects in the bottom of the decorative pot. Better for the plants and less work for you.

Use a quality, well-drained potting mix when moving herbs into another container. Be sure to place a saucer or tray under the pot to protect your furniture. Set on a decorative placemat for added protection and add a few seasonal items to complete your display.

Include some basil to dress up a pizza, salad, or soup with just a few leaves. Add some oregano for seasoning any tomato-based dishes such as pizza and pasta. Use fresh thyme to add flavor to cheeses, eggs, tomatoes, and lentil. Lemon thyme makes a nice tea.

Chives' mild onion flavor is great on potatoes, but consider adding it to soups, dips, seafood dishes, and omelets. Just snip a few leaves and cut them into

smaller pieces before adding them to your dish.

Parsley is high in vitamin C and often added to soups, pasta, salads, and dressings. Harvest a sprig at the end of the meal to freshen your breath.

Always water plants thoroughly when the top inch of soil is starting to dry. Basil likes slightly moist soil but not soggy wet. Pour off excess water that collects in the saucer or elevate the pot on pebbles above any water that lingers in the saucer or tray.

And don't forget the snips. Let everyone add their own favorite herbal seasonings to their meal. Encourage everyone to make the cut above a set of leaves. This keeps the plant looking good and the wound will close quickly. And don't be timid; regular harvesting encourages new growth for future harvests.

When the herbal centerpiece is not dressing up the table, move the plants to a sunny window or under artificial lights. Avoid drafts of hot and cold air. Continue watering it thoroughly as needed.

Everyone will appreciate the



Photo Courtesy — Gardener's Supply Company

An edible herbal centerpiece allows guests to snip herbs to season their meal.

fresh flavor and fun of flavoring their own meals right at the table during your holiday meal.

Melinda Myers is the author of more than 20 gardening books, including *Small Space Gardening*. She hosts *The Great Courses "How to Grow Anything"* DVD series and the nationally-syndicated *Melinda's Garden Moment* TV & radio program. Myers is a columnist and contributing editor for *Birds & Blooms* magazine and her Web site is www.MelindaMyers.com.

LOCAL SERVICE PROVIDERS



AUTO SERVICES



**Master Technicians
Over 28 Yrs.
Experience**

ASE
ALTERNATE
REPAIRER
CERTIFICATION

All Repairs Welcome

Desmarais Auto Repair

**Free Diagnostics
While-you-wait**

**All Repairs Guaranteed
24 mos. or 24,000 miles**

1067 Stafford St. • Rochdale, MA

(Across from Rochdale Park)

508.892.9800



APPLIANCES

**Family owned & operated.
Servicing household appliances since 1978.**

**Complete Line of
NEW APPLIANCES**



All Major Brands
6 & 12 Months
Financing Available

*Instant Credit • In -shop Repairs
Delivery, Installation & Removal*

Dave's Appliance Inc.

508-867-3122

Parts Hotline 888-229-1027

42 W. Main St., Brookfield, MA

Hours: Mon-Thurs 9-6 • Fri 9-5 • Sat 10-3



LANDSCAPING & TREE



**Local,
Licensed
and
Insured!**

Tree removal/Trimming
Wood chipper rental
Land clearing • Excavation • Lawn care

**Call 508-320-9080
for a free estimate!**

CATEGORY OF YOUR CHOICE



**Your Ad Here
Call Today!**

PLOWING/SANDING

**HARRISON
LANDSCAPING AND
JON'S LAWN
& PLOWING**



**Plowing &
Sanding**

Call Frank 508.248.5488

**Charlton/Sturbridge Area
Experience • Insured • Dependable**

www.harrisonlandscaping.com

**To advertise in The
Local Service Provider
Directory**

**Contact June
at 508-909-4062**

Jsim@stonebridgepress.news

ROLL OFF DUMPSTERS

PEPIN
WASTE SERVICE



Your Local Roll-Off Specialist

**Weekend
Special**

10 yd. Rental 1 Ton

\$275

3 sizes available. Call for pricing.



Roll Off Containers
Weekend Dumpsters
for the Homeowner
Houses • Attics • Cellars
Construction Sites

10-15-20 Yd.

508-892-4193 • 508-769-6603

Leicester, MA

Fully Insured



OBITUARIES

Kathleen Gibson, 77

FISKDALE- Kathleen” Kathy “ Gibson, 77 of Sturbridge MA, passed away on Saturday, Dec 5th, after a short illness



She is survived by her three children, Laurie Johnson and her husband Paul of Boylston MA, her daughter, best friend and devoted caregiver Susan McDowell of Woodstock, CT and her son Steven Gibson and his wife Kara of Nantucket Massachusetts. Kathy also leaves behind her grandchildren Erin McDowell, Brianna Krushefsky, Aidan McDowell and Tyler Gibson who she

loved dearly. She is survived by her sister Arlene Kingston Stanton of Charlton Massachusetts. She is pre-deceased by her parents Wilfred and Mary Casey, her sister Mary Mosher and niece Dawn Mosher. She is also survived by five nephews and nieces.

Kathy was blessed in her life with many friends who were more like family. Her children are thankful for each of them and the gift of their friendship that brought her great joy. Her children are especially grateful to Leslie Mallon and Ellen Rigatti for giving her the gift of true friendship for decades.

Kathy was born and raised in Charlton Massachusetts. A resident of Sturbridge Massachusetts for the past 50+ years where she raised her chil-

dren with her former husband William Gibson of Southbridge. She was a hair-dresser for several years in several salons, but her greatest joy was being a Mom.

Her children want to extend their appreciation to VNA care network and Tri-Valley Elder Services for their compassionate care and dedication to their Mom. Additionally, to the outstanding doctors nurses and PCA's at 6 ICU and the 7th floor of UMASS University for taking such wonderful care of her and her children in her final days.

If you would like to honor her memory, her children ask that you do a random act of kindness for someone in need this holiday season as Kathy would have loved that. Her children

learned the magic of giving through watching her kindness, generosity and caring acts for friends when they were ill or in need.

York Beach Maine was her favorite place and where some of her best family memories were made; her children will honor her with a memoriam at Nubble light house.

Funeral arrangements will be private in light of the COVID pandemic. A celebration of life with her large circle of friends and her family will be held at a future date.

The Daniel T. Morrill Funeral Home, 130 Hamilton St., Southbridge, is directing arrangements.
www.morrillfuneralhome.com

KIMONO

continued from page A4

tive milieu of Kyoto in the late nineteenth and early twentieth centuries, as traditional approaches to kimono-making confronted industrialization and modernization. Seifū's bold, saturated palette, as well as the striking use of repetition, organic and flowing lines, and rich patterning, references Art Nouveau, which influenced Japanese arts and crafts at this time.

Displayed at the center of the exhibition will be the wedding kimono created by Chiso, bringing into vivid reality the design sensibility so evident in the surrounding prints. For this commissioned work, Chiso's head senior designer Imai Atsuhiko drew upon the landscapes of both Japan and New England, specifically the "Seven Hills of Worcester"—which is reflected in the seven advanced textile techniques, as well as the seven gradations of color used in the kimono. Inspired by the lyrical fall Japanese and New England foliage that are both dominated by brilliant maple leaves, the design incorporates a maple leaf motif rendered as an octagon—a reference also to Chiso's octagonal company trademark—which creates a rich pattern that covers the entire kimono surface. Seven large concentric octagons also superimpose over the pattern, one of which is only apparent when the kimono is closed in the front. When the kimono is worn, the two halves of this concentric octagon come together in the front to form one complete octagon, visually and poetically uniting Chiso and Worcester in a marriage of friendship between the two institutions. The presentation of this commissioned work will be supplemented with videos and photography—in an accompanying virtual exhibition on the Museum's website—demonstrating the seven advanced textile techniques used in the kimono by

Chiso, both endangered techniques as well as those newly invented, including: paste-resist*yūzen* dyeing, colored flour paste-resist dyeing (*iro utsushi itchin yūzen*), gold leaf, embroidery, and wax-resist dyeing.

Curated by Vivian Li, "The Kimono in Print: 300 Years of Japanese Design" is generously supported by the E. Rhodes and Leona B. Carpenter Foundation. Early research for this project was made possible by the Japan Foundation and the Institute of Museum and Library Services. Media partner is WGBH.

About the virtual exhibition "Kimono Couture: The Beauty of Chiso" The Worcester Wedding Kimono was commissioned as part of the exhibition Kimono Couture: The Beauty of Chiso, co-curated by Vivian Li and Christine Starkman in partnership with Chiso, the revered 465-year-old kimono design and production house based in Kyoto, Japan. Due to travel restrictions caused by the COVID-19 pandemic, Kimono Couture will now be presented virtually atkimonocouture.worcesterart.org. The virtual exhibition will be launched on the Museum's website in ten weekly installments from November 28, 2020 through February 6, 2021 and then will run concurrently with The Kimono in Print. Research for this project was made possible by the Japan-United States Friendship Commission and the Northeast Asia Council of the Association for Asian Studies. The exhibition presentation and kimono commission are supported by the Fletcher Foundation and Michie Family Curatorial Fund. Additional support is provided by Sandy Hubbard and Thomas J. Logan and Emily and James Holdstein. Corporate sponsors are Cornerstone Bank and Imperial Distributors.

Related programming As part of its monthly Master Series Third Thursday program, the Museum will present a talk, "Kimono Fashion in Kyoto," by Monika Bincsik, the

Diane and Arthur Abbey Assistant Curator for Japanese Decorative Arts at the Metropolitan Museum of Art on Thursday, April 15, 2021 at 6:00 p.m. Registration information for the virtual event will be available on the Museum's website, worcesterart.org.

Master Series Third Thursday programs are hosted by the WAM Members' Council and sponsored by AbbVie. Additional support is provided by the Michie Family Curatorial Fund, the Amelia and Robert H. Haley Memorial Lecture Fund, the Bernard and Louise Palitz Fund, and the Spear Fund for Public Programs.

About the Worcester Art Museum The Worcester Art Museum creates transformative programs and exhibitions, drawing on its exceptional collection of art. Dating from 3,000 BCE to the present, these works provide the foundation for a focus on audience engagement, connecting visitors of all ages and abilities with inspiring art and demonstrating its enduring relevance to daily life. Creative initiatives—including pioneering collaborative programs with local schools, fresh approaches to exhibition design and in-gallery teaching, and a long history of studio class instruction—offer opportunities for diverse audiences to experience art and learn both from and with artists.

Since its founding in 1896, the

OPIOID

continued from page A6

to track overdose incidents. The final piece is the outreach, and thanks to this new grant the puzzle will be complete."

The three-year federal grant, which will begin administering funds in early 2021, was awarded through the Comprehensive Opioid, Stimulant, and Substance Abuse Site-Based Program (COSSAP). Local police officials are thrilled to have additional tools in their arsenal to help combat the opioid crisis.

Worcester Art Museum has assembled a collection of 38,000 objects: from the ancient Near East and Asia, to European and American paintings and sculptures, and continuing with works by contemporary artists from around the world. WAM has a history of making large scale acquisitions, such as its Medieval Chapter House, the Worcester Hunt Mosaic, its 15th-century Spanish ceiling, and the Flemish Last Judgment tapestry. In 2013, the Museum acquired the John Woodman Higgins Armory Collection, comprising two thousand arms and armor objects. It continues to commission and present new works, such as 2017's installation of the immersive Reusable Universes sculptural series and Organic Concept environment by Shih Chieh Huang.

The Worcester Art Museum, located at 55 Salisbury Street in Worcester, MA, is open Wednesday through Sunday from 10 a.m. to 4 p.m.; and the third Thursday of every month from 10 a.m. to 8 p.m. Admission is \$18 for adults, \$14 for seniors 65 and older and for college students with ID. Admission is free for Museum Members and children ages 17 and under. On the first Sunday of each month, admission is free for everyone. Museum parking is free. Admission is by timed ticket only, which must be purchased in advance atworcesterart.org.

"When the grant is in full swing, we will have access to recovery coaches who we can link up with individuals that need assistance," said Leicester Police Chief Ken Antanavica.

The LPD currently has a sergeant responsible for monitoring all overdose incidents and entering them into the CIMS database. The sergeant also monitors and orders Narcan as needed.

Chief Antanavica said his officers are looking forward to working with the recovery coaches as another layer of community assistance.



CHRISTMAS DINNERS TO GO FROM HEARTHSTONE MARKET

Enjoy Time With Your Family and Let Us Do The Cooking For You

COMPLETE DINNERS* \$109 .95 plus tax

Please call Hearthstone Market 508-347-7077

Feeds 8 to 10 people

ENTRÉE'S
(choice of one)

Thick Sliced Roast Turkey Breast with seasoned bread stuffing & gravy, cranberry sauce

Sliced Baked Ham with Pineapple sauce

Roast Stuffed Pork Loin with cranberry- apple stuffing and gravy

Baked Lobster Stuffed Haddock Casserole (add \$20.00)

~ AND ~

SIDES *(choice of one)*

Fresh Mashed Potatoes

Rice Pilaf

Oven Roasted Potatoes

~ AND ~

SIDES *(choice of one)*

Fresh Butternut Squash

Baked Broccoli & Cauliflower Au Gratin,

Roasted Candied Carrots,

Seasoned Green Beans

Buttered Corn

~ AND ~

DESERTS *(choice of one)*

Pumpkin Cream Pie

Mixed Fruit Pie

Chocolate Cream Pie

Pumpkin Pie

Pecan Pie

Apple Pie

*** All dinners include:**

12 Dinner Rolls & Butter and Pint of Gravy

EXTRAS

Sliced Roast Turkey Breast with stuffing and gravy 39.95 ~

Baked Ham with pineapple sauce 39.95 ~

Roast Stuffed Pork with gravy 39.95

Baked Lobster Stuffed Haddock Casserole 74.95

Mashed Potatoes-Oven

Roasted~Rice Pilaf 21.95 each

Green Bean~Butternut Squash~Candied Carrots ~ Buttered Corn 21.95 each

Baked Broccoli & Cauliflower Au Gratin 24.95 each

Pumpkin Cream~Pumpkin Mixed Fruit Pecan~Apple

Chocolate Cream 13.95

All Meals are put up cold ready for your oven

All Dinners can be picked up on Thursday, December 24 from 10:00 am. to 4:00 pm.

ALL ORDERS MUST BE PRE-PAID BEFORE PICK-UP

Please Place all orders no later than Monday. December 21, 12:00 noon

Thank You

We wish you a happy and safe holiday season!

Call or stop by for more details.

Rt. 20, 630 Main St. • Fiskdale, MA 01566 • 508-347-7077 • Open 7 Days a Week • 11am-7pm - **ENTRANCE IN BACK**

hearthstonemarket1@gmail.com • hearthstonemarketandcatering.com

REAL ESTATE



111 East Main Street, Webster, Massachusetts 508-943-9306 508-987-0767 1-800-552-7444
Licensed in MA & CT



Jules Lusignan



T.A. King



Maureen Cimoch



Ellen Therrien



John Kokocinski



Adrienne James

Each Office Independently
Owned and Operated



www.Century21LakeRealty.com • www.WebsterLake.net #1 on the Internet

Listings Always Needed – We're Always Busy Selling!



WEBSTER – 20 Kunkel Ave! SUNNY SHORES! First Time Offered! 8 Rooms, 4 Bedrooms, 2.5 Bath Colonial! Featuring an Appliance Eat-in Cabinet Packed Kitchen! Formal Dining Room! 1st Floor Family Room w/Hardwood Floor! 1st Floor Half Bath w/Laundry! Gleaming Hardwood Staircase to the 2nd Floor w/4 Bedrooms! Master w/ Master Bath & Walk-in Closet! Many Recent Updates including Roof, Central Air, Hot Water Heater, Dishwasher & Refrigerator! Back Deck Overlooks Large Fenced Yard! 7 Zone Irrigation System! Farmer's Porch! Shed! 2 Car Garage w/Openers! This Home has Everything You Need and Then Some! Expandable Basement! Desirable Neighborhood w/Webster Lake Beach & Boat Ramp Access Nearby! Convenient to Route 395! **\$369,900.00**

WEBSTER – 6 Nicholas Circle! 8+ Rm Center Hall Colonial! 1.22 Acres! Sought After Neighborhood! Great Commuter Location Accessible to Many Major Routes! Spacious Stainless Steel Appliance Cabinet Packed Eat-in Kitchen & Formal Dining Rm! 23 x 24 Plrce Family Rm w/Cathedral Ceiling & Slider to the Huge Deck! Front to Back Living Rm! 1/2 Bath w/Laundry Closet! The 2nd Floor You'll Find the Comfortable 12x17 Master w/Walk-in Closet & Full Bath w/Linen Closet! 2 Additional Bedrooms plus an Office/Nursery/Bedroom all w/ Ample Closets! 2nd Full Bath off the Hall w/Linen Closet! 2.5 Total Baths! Lower Level Ideal for Storage or Future Expansion! 2 Car Garage w/Electric Openers w/Double Door Entry to the Basement for Moving Larger Items aka Boys Toys! 2 Z Oil Heat, 2 AC, Separate Oil Water Heater! Irrigation! Don't Delay! **\$418,900.00**

DOUGLAS – 102 SE Main St! Start Packing! Spacious 9 Rm Colonial! 223 Acres! Center Island Granite Kit w/Soft Close Cabs, SS Appliances! Slider to 24' Deck! Open Floor Plan! Hickory Wood Floors throughout the Kit, Din & Liv Rms, all w/Recessed Lighting! 1st Flr Office or Possible 4th Bdrm w/Oak Hardw Flr! Full Bath in the Hall! 2nd Flr w/Full Dble Vanity Bthrm & 3 Comfortable Bdrms, all w/Beautiful Wood Laminate! First Master w/Cathedral Ceiling, Skylight, Ceiling Fan, Bay Window overlooking the Back Yard and a Master Bath! Lower Level w/2 Finished Rms, Utility Rm w/Laundry and Half Bath! 3.5 Baths Total! Recent Ch/Air, Heat & Roof! 24x26 2 Car Detached Garage! Huge Shed! Nearby Nature Trails & Wallum Lake Beach! **\$379,900.00**



WEBSTER LAKE – 112 Gore Rd! NORTH POND! Sucker Brook Cove! 8 Rm, 3 Bdrm, 1.5 Bath Ranch is Ready for You! Southwestern Exposure! Gorgeous Sunsets! Unique Waterfront! An Open Floor Plan! Lake Views from Nearly All Rooms! 2x6 Construction! Energy Efficient Blinds in Every Room! 4 Oil Tanks - Fill Up Once a Year! C/Air! Gas Fireplace! Whole House Fan! Meticulously Cared For! Large workshop! 3 Car Garage! Carport! 2 Sheds w/Electric! Back Yard is Perfect for Family Gatherings! Plenty of Off Street Parking! Summer is Here! **\$539,900.00**

WEBSTER – 55 Hillside Ave! 7 Rm, 4 Bedroom Cape! Great Highway Access! Walk to Memorial Beach! View July 4th Fireworks from Your Backyard! Liv Rm w/ Hrdwds, Ceiling Fan & Pellet Stove! Eat-in Kit! Fam Rm! Full Bath! 1st Flr Master w/Hrdwds & Ceiling Fan! Oil Heat! Vinyl Sided! Younger Roof! Replacement Windows! Town Services! Fenced Yard! 1 Car Garage! **\$239,900.00**

SHREWSBURY – Waterfront – Flint Pond w/Direct Boating Access to Lake Quinsigamond! The Quiet of Flint, All the Action of Quinsig! Privacy Galore on Sargents Island – 4.27 Acres – 2,000' Waterfront! Beautiful Sunrises & Sunsets! Looking for a Getaway, Principal Residence or Second Home, Winters in Florida, Summers on the Island! Tons of Potential, Do a Little or Do a Lot! 4+ Rm, 1 Bdrm, 1.5 Bath "A" Frame with the Ability to Finish the Walk-out Lower Level, add a Family Rm, Bdrm, Bathrm! Nature Abounds, Visited by Deer, Fox, Eagles & More! In Time for Summer! **\$579,900.00**

GRAFTON – 168 Brigham Hill Rd! 8 Rm Garrison Colonial set on 1.3 Acres! 4 Comfortable Bdrms & 2 Full Bthrms! Freshly Painted, Floors Recently Refinished! Spacious Kit w/Lunch Counter! SS Appliances w/Gas Cook-Top! Grand Dining Rm for Family Gatherings! 19x26 Living Rm w/Pellet Stove! Master Bdrm w/Dble Closets & Hot Tub! Bright & Airy Mudroom out to the 2 Car Garage! Furnace & Hot Water Tank 5 Years Young! Radon tested at 2.5! Newer Roof on Garage & Breezeway! New Well Water Tank Installed! Title V in-hand! Property Abuts Grafton Land Trust - Hiking Trails Right Out Your Back Door! Convenient to Routes 90, 9 & 20! Immediate Occupancy! **\$449,900.00**

Featured New Listings!

WEBSTER - 11 PERRYVILLE ROAD



Beautiful Split entry home, situated on 1 acre, nicely landscaped lot! Vaulted ceiling! 6 rooms, 3 bedrooms, 2 full baths, Fireplace! Central Air - 2 Zones! Covered deck. All town services! 2 car garage under. Shed! **\$289,900.**

DUDLEY - 22 ROBERTS ROAD



Lovely 3 bedroom Ranch! Single door 2 car garage with storage! Eat-in kitchen, Fieldstone Fireplaced Living Room! 3 bedrooms, hardwood floors, Remodeled bathroom! Lower Level fieldstone walls/fireplace! In-ground pool! - 3.58 ACRES includes extra lot. **\$312,000.**



hope2own.com
508.943.4333

Sharon Pelletier - Owner Broker
Licensed in MA, CT & RI

We Want
Your Listings!

43 East Main Street Webster, MA 01570
Fine Realtor Associates to Serve You!

June Cazeault * Laurie Sullivan * Matthew Ross * Lori Johnson-Chausse * William Gilmore II * Brian Bohenko

WOODSTOCK CT - 110 JOY RD



Quisential Woodstock Farmhouse w/Spectacular views of Pond. Detached Studio Building! 2.5 Acres. Prof. Landscaped. 5 Bedrooms. Fireplaced Dining, library/Music room. Master Bedroom, 2 Full Baths! Renovated Kitchen. Upstairs, 4 Bedrooms w/Full Bath. **New Price \$399,900.**

WEBSTER - 21 3RD STREET UNIT: B



Condominium - Living leisurely! 3 bedroom, 2.5 bath (including master suite) home. Freshly painted! Recessed lighting, gas fireplace, and sliding doors, to beautiful balcony. Walkout basement! built-in outdoor grilling spot. Easy access to 1395. **\$224,900**

N. ATTLEBORO - 523 KELLY BLVD.



Farmhouse style home! Sun-drenched interior! Spacious floor plan! living room, eat-in kitchen. 6 rooms total, 4 bedrooms, 2 baths! Heated by gas / hot water baseboard! Outdoor kitchen, pool! Jacuzzi tub/shower. Located just minutes from Rt 95 & 495! assisted sale **\$408,500.**

WEBSTER - 103 UPPER GORE RD



Estate Sale! LOCATION! Scenic Upper Gore Rd! Amazing View of Beautiful Webster Lake! Main level has 3 Bedrooms, Kitchen, Dining Rm, Common Bathroom, Master Bedroom & Master Bath - Fireplaced Living Room! Finished Lower Level, 1/2 Bath, Laundry, Large room w/Pellet Stove & Direct Garage Access! Tiered deck, w/Screened porch, leads directly to your "Salt water" Inground Pool! **\$319,900.**

LAND WEBSTER/OXFORD/DUDLEY/DOUGLAS

Oxford - 4 Leicester St - Approx. 8.47 ACRES! River Frontage Possible to be Subdivided! **\$89,900**
Webster - Upper Gore w/View of the Lake! 1+ Acre! Artesian Well, Septic Design & Conservation - DONE. **NEW PRICE \$115,000.**
Webster - Cooper Road 2 Buildable Lots! Water & Sewer Access. Zoned Lake Res! Each **\$24,500.**
Douglas-Mount Daniels 2.5 Acres abuts Douglas State Forest! **ON DEPOSIT! \$132,900**
Dudley - Marshall Terrace 12,000+/- Sq Ft Lot! Potential for a 2 Family! **SORRY SOLD! \$70,000.**
Dudley - Packard Dr. 2 Lots! Very Private! off Ridge Dr. Will not last! **SORRY SOLD! \$50,000**

OXFORD - 4 SPICEBUSH LANE



One level living with added 35 x 18 finished walk-out lower level. Cathedral ceilings, skylight dining, hard-wood flooring and central air. Stainless appliances! Large double oven. Over-sized 30 x 14 deck. quiet cul-de-sac! **New Price \$314,900.**

SOUTHBRIDGE - 14 SERVANT WAY



Young ranch with heated 2 car garage, 3 bedrooms, 2 bathrooms. Efficient Propane heat, central air! Open floor plan! gas fireplace! Master Suite w/bathroom, Master California Closet! assisted sale **\$279,900.**

OXFORD - 115 CHARLTON ROAD



Beautiful home set back off road providing privacy and oversized yard. Kitchen w/granite counters & abundance of cabinets. Cathedral ceilings kitchen, dining and living room. Open floor plan! large deck with large backyard through sliders in dining room. Hardwood floors! Tile baths. Master bedroom/master bath! Finished walkout lower level w/bat 2 car garage. Extras: above ground pool! **\$369,900.**

WEBSTER - 20 KINGSBURY



NEW TO THE MARKET! Custom Sprawling Split 2800+ SF! Central Air! Kitchen, Dining Room, Cathedral Ceiling Living Room, 3 Bedrooms! Granite Counters & New Flooring! New Boiler - Hot Water Tank - Oil Tank! FULL finished Lower Level w/ Full Bath & Laundry! THERE'S MORE! 2 Car Garage, renovated to include Hydro Heat, AC & 1/2 Bath! Great for Fitness Studio, Game Room or Home School! Over 1.4 Acres! **\$360,000.**

WEBSTER - 52 CUDWORTH ROAD



1.99 ACRE INDUSTRIAL ZONED LOT! GREAT OPPORTUNITY TO LIVE & WORK FROM HOME! Amazing 1790 Antique Colonial! Undergone major updates & renovations, maintaining Antique Charm! Great Room graced by an Open Hearth Stone Fireplace! Soaring Cathedral Ceilings! **\$499,900.**

On the shores of Lake Chargoggagoggmanchauggagoggchaubunagungamaugg

Webster Lake - 100 Lakeside Ave



WEBSTER LAKE! PANORAMIC VIEWS! BEAUTIFUL SUNSETS! Extraordinary Waterfront Contemporary! Architect designed with Lake Living in mind. Custom Built with Attention to High Quality & Detail. Outstanding open concept, water view from almost every room. Nicely situated on a .25 acre level peninsula, 180' +/- prime lake frontage! Enhanced by a all natural shoreline! All you need to live is located on the 1st floor. Grand 2 story foyer, cozy fireplaced living room, gourmet kitchen, lake facing dining, formal dining room, media room & spacious 1st floor guest BR Suite w/ private bath. Incredible 2nd floor fireplaced lake-facing corner master suite w/luxurious private bath, 3 more 2nd floor BRs & full bath! Something Special! Remember, Timing Is Everything! **\$1,075,000.**

Lake Shirley - 647 Reservoir Rd



Lakefront! Lake Shirley! Modern Flare on a Lakefront Colonial! 1st level Formal large entry foyer, living room, gas fireplace, chef kitchen, Impala black granite, center island, 3 season porch, overlooking the lake. 1st FL bedroom suite w/ shower and jacuzzi tub. 2nd floor Master Suite! Lower level Summer kitchen, full bath, game room. Crown moulding & hardwood floors throughout, wired sound system, radiant floors. oversize 2 car garage. Additional Guest House! assisted sale **\$1,040,000.**

Make the move!
Find the homes of your neighborhood



CALL FOR A MARKET ANALYSIS

PUT YOUR TRUST IN US
TEAMWORK AND EXPERIENCE

Jo-Ann Szymczak 774-230-5044

Diane Luong 774-239-2937

Maria Reed 508-873-9254

ReMax Advantage 1

25 Union St., Worcester MA 01604



Licensed in MA & CT

WEBSTER LAKE WATERFRONT



INCREDIBLE VIEWS!

Open living room/ dining room with waterfront view from both locations, Appliance kitchen, First floor laundry, Master bedroom suite with sitting or office area, 1.5 baths, Deck, Waterfront living without the maintenance, Boat slip available, Only for sale to this unit. **103 Beacon Park #103 - \$324,900**

Call for details and private showing of this unique unit!




MEET YOUR LOCAL REAL ESTATE PROFESSIONALS


Perfect for Realtors, Mortgage Companies, Banks, Real Estate Attorneys, Home Inspectors, Chimney Inspectors, Lead Removal businesses, Insurance Companies, etc... any business involved in the buying or selling of real estate.

To join this section, please contact your local sales rep, 1-800-367-9898 or email jsima@stonebridgepress.news


My properties are selling!
Yours could be NEXT
if you list with me! Call me and
let's put SOLD on your listing!



Buy with Confidence. Sell with Success.
DorrindaSellsHomes.com



Dorrinda O'Keefe - Shea
Realtor
dorrinda@c21lovet.com

CENTURY 21
NORTH EAST


OFFICIAL SPONSOR
OF THE BOSTON BRUINS
978.434.1990

Contractors, 5 acres in Dudley!

5 room ranch.
Needs rehab
11 Paglione Drive
\$149,900



Jo-Ann Szymczak 774-230-5044
Diane Luong 774-239-2937
Maria Reed 508-873-9254

ReMax Advantage 1
25 Union St., Worcester MA 01604

CALL FOR A MARKET ANALYSIS

Licensed in MA & CT



Chauvin Excavating LLC
Quality work since 1986
82 Dresser Hill Road, Charlton, MA 01507
Ph: 508-248-5772 • Cell: 508-922-0041
Email: bernie@chauvinexcavating.net
TITLE FIVE INSPECTION SERVICES

Septics Installed & Repaired.
Full Service Site Contractor
Water & Sewer Lines Installed & Repaired
New Home Site Work
License & Insured

Mary Hicks Realtor®

CENTURY 21
North East



Direct: 508.612.4794
Home Office: 508.867.2222
www.maryahicks.com

Please call for all your Real Estate needs

270 Main Street, Spencer, MA 01562
maryangela87@yahoo.com
Each office is independently owned and operated.



Why call the
Michelle Terry Team
to sell you home?

We have a great marketing plan that includes:

- Home staging services
- Home warranties
- 3D videos
- Professional photography
- Ramped up open houses!
- And so much more...



YOUR LOCAL
REAL ESTATE PROFESSIONALS

130 W. Main Street
Spencer, MA 01562
Michelle Terry • Broker /Owner
michelleterryteam.com

Give us a call today! 508-202-0008

 like us on facebook



Lisa Caron,
full-time
Broker
Associate
GRI, ABR, LMC,
CDPE, SRS,
SRES, PSA, MRP

Call: 508-341-8299
42 West Main Street
Brookfield, MA
Hours: M-Th 9-6, Fri 9-5
and by appointment
~ Notary Public~
~ www.lisacaron.com ~

Jules Lusignan
#1 in Sales 2006-2020
South Worcester County
\$156,908,380.00 SOLD


Jules
Lusignan
Owner
Broker
Founder

CENTURY 21
LAKE REALTY

A
41 Year
Company!

111 East Main St., Webster, MA
Thinking of selling? Call 1-800-552-7444
www.Century21LakeRealty.com
www.WebsterLake.net



REAL ESTATE

ERA Key Realty Services

"Put 36 years of combined real
estate experience to work for you!"


Donna Flannery
508-885-6665
donnaflannery.com
donnaflann@aol.com




Kayleen
Flannery-Sauvageau
508-612-9843
Kayleen00@aol.com

415B Main Street, Spencer, MA 01562

Country Bank announces sponsorship agreement with Worcester Red Sox

WORCESTER — Country Bank, a full-service financial institution serving the region with assets of \$1.8B, today announced that it entered into an elite-level corporate sponsorship arrangement as a Founding Partner of the Worcester Red Sox. Country Bank's multi-tiered sponsorship includes an iconic sign in right field atop the stands known as the "Worcester Wall" along with the Country Bank Guests Services located on the first base concourse.

The partnership between the WooSox and Country Bank also underscores their mutual commitment to the community through the WooSox Foundation and Country Bank's Charitable Giving Program by supporting local non-profits in the region through a combined charitable giving campaign throughout the baseball season.

In addition, both organizations will be working together to launch a Teacher of the Month Program that recognizes the outstanding work teachers do every day to educate and support students.

"We have been impressed and inspired by Country Bank's sense of community involvement," said WooSox President Dr. Charles A. Steinberg. "We see how helpful they are to various institutions and thousands of people in our region, and we welcome them to Polar Park with open arms as we work together to enhance the quality of life in

our community even more."

"In an era where spectator sports continue to be redefined by new norms of social distancing, sports sponsorships are taking on new forms. With that in mind, we couldn't be more excited to be a part of the WooSox, and the Worcester community. The addition of year-round entertainment, including ball games, concerts, and various family activities at Polar Park, is exciting for the people and businesses in the region. We all look forward to the day when we can come together again at the ballpark enjoying activities with our families and friends. We also look forward to seeing our businesses thrive once again after being heavily impacted by the pandemic," said Paul Scully, President and CEO of Country Bank.

To kick off their partnership, last week a team from Country Bank and the WooSox Mascot, Smiley Ball, delivered 500 Thanksgiving meals prepared by Old Sturbridge Village along with iconic apple pies from Worcester based Table Talk Pies to the St. John's Food Pantry for the Poor.

"The alignment of our organizational values with the WooSox solidifies our commitment to service and teamwork as we continually strive for excellence in all we do," shared Scully.

About Country Bank
Country Bank is a full-service mutual



Photo Courtesy
Pictured: Dr. Charles Steinberg, President of Worcester Red Sox, Paul Scully, President and CEO of Country Bank, Mary McGovern, EVP and CFO of Country Bank, Tom Wolcott, SVP, Commercial Lending of Country Bank, Shelley Regin, SVP of Marketing of Country Bank and Jack Verducci, VP, Corporate Partnerships of the WooSox.

community bank serving central and western Massachusetts with 14 offices in Ware, Palmer, West Brookfield, Brimfield, Belchertown, Wilbraham, Ludlow, Leicester, Paxton, Charlton,

and Worcester. Country Bank is a member of FDIC, DIF, and the SUM network. Country Bank can be reached at 800-322-8233 or online atcountrybank.com.

Baker administration pushes awareness of COVID precautions

BY KEVIN FLANDERS
STAFF WRITER

REGION — With mask fatigue and other frustrations continuing to build statewide, the Baker-Polito Administration is scrambling to find creative outreach options.

Last week, Gov. Charlie Baker announced a new public awareness effort encouraging residents to continue heeding health guidance. Dubbed "Get Back Mass," the campaign highlights the importance of wearing a mask, practicing good hygiene, keeping a safe distance, and avoiding large gatherings.

"The campaign features residents from across the Commonwealth who, in their own words, draw the connection between taking precautions and getting back to the activities, people, and experiences they enjoy," read a statement released

by Baker. "The campaign underscores the importance of taking precautions so the Commonwealth can slow the spread of the virus and keep our communities safe."

The multilingual campaign will run on several platforms this winter, including television and digital ads. The Get Back Mass program will also utilize social media messages, and informational posters will be displayed in several public locations.

The program will run through at least February, officials said. Depending on COVID-19 conditions toward the end of the winter, the campaign could be expanded to March and beyond.

The Get Back Mass campaign is the latest in a series of public awareness efforts the Governor has launched to help slow the spread of COVID-19. The state has seen sharp increases in new cases and hospitalizations over

the last month. State leaders blame the surge mostly on large private gatherings and complacency with health measures, as well as travelers returning to the state without adhering to quarantine regulations.

Looking ahead, officials are particularly concerned about a steeper spike emerging from Thanksgiving travel and gatherings.

In addition to the Get Back Mass campaign, the Baker-Polito Administration made several other COVID-19 announcements last week. These include an award of \$650,000 in grant funding to community-based and faith-based organizations to help reduce the spread of the virus.

"The COVID-19 Community Grant Program supports nonprofit, community-based, and faith-based organizations in raising awareness of COVID best

practices," the Governor's statement read.

Twenty organizations statewide will receive grant awards ranging from \$10,000 to \$50,000. Awardees will engage in peer leadership activities, advanced COVID-19 health communications, educational programs, and community outreach efforts, among others.

Also, the Governor announced last week the expansion of the Abbott BinaxNOW testing program to include Massachusetts long-term care facilities. This will increase COVID-19 testing availability throughout the winter for some of the state's most vulnerable residents.

For more information on statewide efforts to combat COVID-19, visit www.mass.gov.

UNICEF

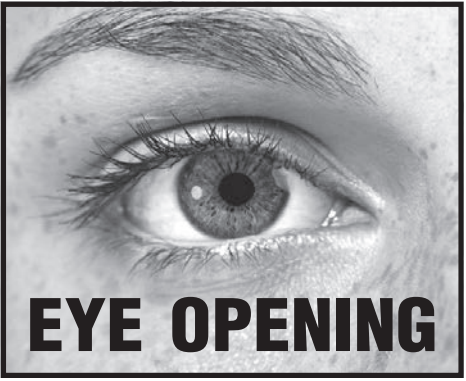
continued from page A1

necessary for growth, learning and development. UNICEF has been treating malnutrition in the first 1,000 days of a child's life, UNICEF has assisted in cutting down the number of children badly affected by stunting by nearly 100 million since 1990."

The Officers of the UNICEF Club, member, and Club Advisor, Professor Cheryl Cahill, MSN, RN were filled with enthusiasm and drive to make a difference in the lives of children.

"In spite of the pandemic and hardship in these present times, we organized a Bake sale to raise for funds" said Boateng.

She added, "Volunteers baked delicious homemade pastries which were served with coffee, tea, or hot chocolate for a donation. The event was successful with safety protocols observed."



2019 Bay Path male grads achieve 100 percent pass rate for NCLEX-PN

CHARLTON — The male graduates of the Bay Path Practical Nursing Academy Class of 2019 recently earned a 100 percent pass rate for the National Council Licensure Examination, a comprehensive adaptive exam that allows students to become licensed and practice as licensed practical nurses (LPNs).

This comes after Timothy Nikopoulos, LPN of Charlton notified Gretheline Bolandrina, MSN Ed, RN, CRRN Academy Director of passing the NCLEX-PN on his first attempt.

“It as a bit of a wait, about four moths since I signed up, and a bit of a drive to South Burlington, Vermont to take one of the only four available test dates in New England” wrote Nikopoulos. He added, “I have begun working as an LPN, with my second shift of training.”

Nikopoulos completed his last two weeks in the Accelerated Bachelor of Science in Nursing (ABSN) pro-

gram at the University of Massachusetts Amherst with his final practicum night shift in the medical ICU. He plans to secure a position in a nurse residency program in critical care/ICU in a hospital setting. The Accelerated BS in Nursing is a full-time undergraduate program that allows students to earn a BS in Nursing in 17 months. This option is open to students who have completed bachelor’s degrees in other disciplines.

Nikopoulos enjoyed the ABSN program at UMass, despite the transition to online learning in April 2020. He was named on the Dean’s List for the Fall 2019 and Spring 2020 semesters. Nikopoulos stated “the rigorous nature of the practical nursing program at Bay Path provided a great framework of knowledge for me to excel in the ABSN program.” His anticipated graduation date is February 2021.

“This accomplishment of the graduates from the PN Class of 2019 warms

an educator’s heart,” said Academy Director Bolandrina. “The Bay Path Practical Nursing Academy prides itself on producing real world ready nurses, outstanding outcomes, and passing on the first try. Male or female graduates, the Academy celebrates NLCEX success.”

The other male members of the PN Class of 2019 are as follows:

James Karuri, LPN of Worcester
Onesmus Katua, LPN of Worcester
David Macharia, LPN of Worcester
Gideon Mendza, LPN of Cherry Valley
Timothy Nikopoulos, LPN of Charlton
Isaac Njoroge, LPN of Worcester
Erik Olson, LPN of Sturbridge
James Wachira, LPN of Worcester

At Bay Path Practical Nursing Academy, the program is a 40-week, (10-month), full-time, Monday through Friday, evening program. The program begins mid-August



Photo Courtesy

The male graduates of the Bay Path Practical Nursing Academy Class of 2019 recently earned a 100 percent pass rate for the National Council Licensure Examination, a comprehensive adaptive exam that allows students to become licensed and practice as licensed practical nurses (LPNs).

and is completed in late June. Graduates receive a Practical Nursing Certificate and are eligible to take the NCLEX-PN licensure exam. The Bay Path Practical Nursing Academy is fully approved by the Commonwealth of Massachusetts Executive Office of Health and Human Services Department of Public Health Board of Registration in Nursing (www.mass.gov/dph/boards/rn) and is accredited by the Commission on Occupational Education (www.council.org). For more information, visit www.baypath.net

Nearly \$2 million awarded in annual community grants

WORCESTER — When the pandemic hit, and adult learners were forced to leave the classroom and seek nurturing study space elsewhere, Lisa Brennan knew there was a challenge in store for some of her members.

As executive director of the Genesis Club in Worcester, Brennan oversees the nonprofit’s Supported Education Program which assists members with severe mental illness in navigating the hurdles of attending classes – be they in a college curriculum, certificate program, or vocational training – while balancing doctor and therapy appointments, medications, and recovery.

“Social connections are key to recovery” said Brennan. “COVID-19 struck right at the heart of what we are – a community of people trying to achieve a common goal of recovery.”

She estimates, each year, 80 members are reliant on the organization’s educational services and focus on greater workforce development.

The Greater Worcester Community Foundation is proud to offer Genesis Club an award to sustain its Supported Education Program and return members to their studies.

“It’s increasingly important for young people to have a solid educational foundation in order to succeed in their careers, personal lives, and feel accomplished,” said Barbara G. Fields,

president and CEO of the Foundation.

Genesis Club’s grant is one of 123 awarded to 114 organizations – totaling \$1.935 million – by the Foundation in its 2020 Community Grant Program cycle. The Community Grant Program is the largest GWCF competitive grantmaking program and is made possible by the generosity of donors.

“We knew the needs of local nonprofits would be different in light of the pandemic,” added Fields. “It is essential for these organizations to receive the funding and support they need to sustain themselves. In this time of uncertainty, the Foundation stepped up to strengthen this sector and meet the needs of our most vulnerable populations.”

In this year’s Community Grant Program, a wide range of projects – everything from food insecurity and cultural engagement to entrepreneurship training, health care delivery, basic needs, and youth opportunities – were awarded funding.

“We are excited and inspired by this year’s grant recipients,” said Jonathan Cohen, GWCF vice president for programs and strategy. “Each of the funded projects speaks to the uniqueness, creativity, and community spirit that is alive and well in Central Massachusetts.”

A list of the 2020 GWCF Community Grant Program recipients – including a

short description of the funded projects and the amounts awarded – is available on the Foundation’s Web site.

The Greater Worcester Community Foundation is dedicated to improving the quality of life for Central Massachusetts residents by connecting donors to high-impact nonprofit organizations and community partners. Since 1975, GWCF has worked in partnership with donors to build a nearly \$160 million endowment and award more than \$142 million in grants to help transform communities and build a strong and vibrant region. We apply our knowledge, relationships, and resources to our work every day therein combining passion and discipline to pursue a vision of Worcester’s success that works for everyone. For more information, please visit www.greaterworcester.org.

that we see coming from the state level. My anticipation is that as we see the rollout of a vaccination and things react from that point that is probably when we’ll see a return back open to the public,” said Golas. “My long range projection is to probably say we’ll be looking at March or by that time, but it depends on what we’ll see from the state level as far as guidance and how quickly the vaccination process rolls out or if there’s any other data metrics that show that case numbers are going back down.”

The town administrator concluded that Charlton citizens are remaining diligent about the virus and that the town hall had already seen a reduction of in-person business prior to the closure. He reminds citizens to remain vigilant as the region continues to manage a second wave of the pandemic.

TOWN HALL

continued from page A1

FOR SALE

Wild Cherry Trees

You cut & take away

Call Bob

508-826-8786

APARTMENT FOR RENT

CHARLTON

3 room, 1 BR

country apartment for rent,

2nd floor, \$900/mo,

heat included

508-769-6031

FOR RENT

Very nice

2 bedroom apartment

excellent location

WEBSTER, MA

Water/rubbish

removal included

\$995/month

Call 508-943-1593

Town-to-Town

Home Town Service,

BIG TIME RESULTS

CLASSIFIEDS

1-800-536-5836

Place your ad today!

USA

MASSACHUSETTS

Worcester

APARTMENT

FOR RENT

BROOKFIELD

1 BR, 2ND Floor

Off street parking

Available NOW

Electric or

Gas Heat

\$580/mo

Has all appliances

No Dogs

Call Dave

413-262-5082

FIREWOOD

3/4 Seasoned/standing dead

hardwood custom cut to your specs.

Delivered to your home.

12"-14" \$300 per cord.

16-18" \$260 per cord.

Call: 508-282-0232



LIVE BAIT

FOR ICE FISHING

Open 24/7

Spencer

508-885-5416



FIREWOOD

Cut, Split

& Delivered

Green or

Seasoned

Call Paul

508-769-2351



WAR RELICS & WAR SOUVENIERS WANTED:

WWII & EARLIER CASH WAITING!

Helmets, Swords, Daggers, Bayonets, Medals, Badges, Rags, Uniforms, etc.

Over 40 years' experience.

Call David

(508) 688-0847.

I'LL COME TO YOU!

FOR ADVERTISING INFORMATION

CALL 508-764-4325

Town of Charlton seeks to fill a

FT Light Equipment Operator position

Under the general direction of the DPW Superintendent, responsibilities include operating vehicles and power equipment in connection with construction, maintenance and repair of streets and related facilities. Knowledge of hazards and applicable safety rules and regulations in equipment operation. CDL, class B license, current DOT card and 2A Hoisting license required. Submit completed application by 12/11/2020 along with resume to HR. Hourly rate: 26.29/hr.

Applications are available online at <https://townofcharlton.net/158/Human-Resources>.

All applications can be emailed to Lynn.Dyer@townofcharlton.net or mailed to Town of Charlton, Human Resources, 37 Main St, Charlton, MA 01507.

The Town of Charlton is an equal opportunity employer.

HOUSEKEEPER NEEDED

To clean house and help organize.

References & CORI check required.

4+ hours a week.

Hourly rate.

Call

774-479-6418

Spencer, MA

JOB OPPORTUNITY

Water Department Superintendent

Town of East Brookfield, MA

The Town of East Brookfield is seeking a qualified individual to manage the Water Department.

Please email Ted Boulay at tboulay@eastbrookfieldma.us or call 508-320-3431 for a complete job description.

Position will be posted until filled

Town of East Brookfield Board of Selectmen

The Town of East Brookfield is an Equal Opportunity Employer

East Brookfield Board of Selectmen

48 HOUR PRICE QUOTE

“How much will new replacement windows & doors cost me?”

Renewal by Andersen has a phone line dedicated to that question.

Call our 48 Hour Price Quote line at 1-800-209-2746, and **we’ll provide a quote within 48 hours of your call.** Most other companies take weeks to produce their estimate. Within 48 hours, a Renewal by Andersen Project Manager will precisely measure your home’s windows and doors, help you choose your window styles, colors, grilles and hardware, and **then we’ll provide a down-to-the-penny price quote that will be good for one full year.** No hidden charges and no more wondering, “How much will new windows and doors cost?”



Get a **FREE** price quote within 48 Hours!
Call **1-800-209-2746**
to schedule your **FREE** in-home visit



Call before December 31st!

SAVE 20%
ON WINDOWS¹

SAVE 20%
ON ENTRY DOORS¹

SAVE 20%
ON PATIO DOORS¹

WITH

\$0 DOWN **0** MONTHLY PAYMENTS **0%** INTEREST

FOR 1 YEAR¹

Minimum purchase of four. Interest accrues from the purchase date but is waived if paid in full within 12 months.

Renewal by Andersen is the full-service replacement window division of Andersen Windows, so everything we do is held to the same standard of excellence that Andersen has lived by for 117 years. And know that we’ve adjusted our operations to serve you in the **safest** way possible.

Make your home more secure. Book a Virtual or In-Home Appointment.

Renewal by Andersen

WINDOW REPLACEMENT an Andersen Company

The Better Way to a Better Window™





Renewal by Andersen is the only brand to win both J.D. Power awards for Windows and Patio Doors in 2020

1-800-209-2746

For J.D. Power 2020 award information, visit jdpower.com/awards. ¹DETAILS OF OFFER: Offer expires 12/31/2020. Not valid with other offers or prior purchases. Get 20% off your entire purchase and 12 months \$0 down, 0 monthly payments, 0% interest when you purchase four (4) or more windows or entry/patio doors between 11/28/2020 and 12/31/2020. Military discount applies to all active duty, veterans and retired military personnel. Military discount equals \$300 off your entire purchase and applies after all other discounts, no minimum purchase required. Subject to credit approval. Interest is billed during the promotional period, but all interest is waived if the purchase amount is paid before the expiration of the promotional period. Financing for GreenSky® consumer loan programs is provided by federally insured, federal and state chartered financial institutions without regard to age, race, color, religion, national origin, gender or familial status. Savings comparison based on purchase of a single unit at list price. Available at participating locations and offer applies throughout the service area. See your local Renewal by Andersen location for details. License number available upon request. Some Renewal by Andersen locations are independently owned and operated. "Renewal by Andersen" and all other marks where denoted are trademarks of Andersen Corporation. ©2020 Andersen Corporation. All rights reserved. ©2020 Lead Surge LLC. All rights reserved.

BEST FARM FRESH MEATS IN CENTRAL MASSACHUSETTS

PASTURE RAISED • NATURAL MEATS

Located in East Brookfield, Massachusetts,
Crooked Creek Farm sells
local and natural farm raised beef and pork.

Now Offering CSA Packages!

Please call for full details.

ASK US ABOUT OUR FREE LOCAL DELIVERY!

To purchase your meat packages you can order by Email or by Phone.
CALL/TEXT: (508) 868-5902 or (774) 200-7308
www.CrookedCreekFarmMA.com Email: CrookedCreekMA@Gmail.com

Find Us on Social Media

Central Massachusetts see surge in COVID cases

BY KEVIN FLANDERS
STAFF WRITER

REGION – With COVID-19 conditions rapidly worsening statewide, central Mass. officials continue their scramble to convince residents to follow health protocols.

Last week, multiple communities throughout the region were listed in the state’s “red zone” for COVID-19 transmission. Positive cases have soared over the last two weeks, both locally and across the state.

North Brookfield (27 positive cases over the last 14 days); Spencer (63); Leicester (63); Charlton (102); Sturbridge (40); and Southbridge (157) have all seen alarming spikes in new cases.

With winter approaching and the holiday season in full swing, officials fear those numbers will continue to rise.

“As COVID infections are on the rise throughout the region, I want to remind the public just how important following the CDC guidelines are to staying safe and reducing transmission,” said Spencer Town Administrator Thomas Gregory. “All persons over the age of five must wear a face covering whenever in public – indoors and outdoors. The Governor’s stay-at-home advisory advises all residents to stay home from 10 p.m. until 5 a.m. While this is not a requirement, residents are strongly encouraged to comply.”

Additionally, indoor gatherings at private residences are limited to ten people, including family household members. Outdoor gatherings are limited to 25 people.

Officials urge residents to adhere to protocols at private residences. State leaders have blamed several outbreaks on large private gatherings without masks or social distancing.

“Face coverings are also strongly encouraged in a private residence when non-household members are present,” Gregory added. “Spencer has now been categorized by the Massachusetts Department of Public Health as a high-risk community. Now that winter is here – and with the holidays approaching – please follow the guidelines that are in place.”

Leicester officials are offering similar insistences. The town has spent much of the last two months in the state’s red zone, leading to the cancellation of trick-or-treating and several other events.

“The Leicester Board of Health and the Town Administration are working closely with the Massachusetts Department of Public Health, the Centers for Disease Control and Prevention, and regional health officials in response to COVID-19,” read a statement released by town officials. “The Leicester Board of Health guides the town response to COVID-19, implementing the recommendations of both the MDPH and the CDC as appropriate, as well as working with the public schools.”

The most current guidance and recommendations being implemented in Leicester will be listed on the town Web site: www.leicesterma.org.

HOLIDAY APPLIANCE SALE

LOWEST PRICES OF THE YEAR.

GIANT TOY DEPT.

MATTRESS SALE!

TWIN	Reg. \$299
NOW \$219⁹⁹	
FULL	Reg. \$499
NOW \$299⁹⁹	
QUEEN	Reg. \$599
NOW \$349⁹⁹	

1000s OF APPLIANCES

IN STOCK FOR PICKUP OR DELIVERY

SLEDS TOBOGGANS ICE SKATES

FREEZER SALE	18 CU. FT. REFRIGERATOR Reg. \$799 ⁹⁹ \$699⁹⁹	DELUXE TOP LOAD WASHER Reg. \$799 ⁹⁹ \$479⁹⁹	GE DELUXE GAS STOVE Reg. \$799 ⁹⁹ \$699⁹⁹	LG FRONTLOAD WASHER \$749⁹⁹	TV SALE
20 CF UPRIGHT (Reg. \$1199.99) \$999⁹⁹	FAMOUS MAKER GAS OR ELECTRIC RANGE Reg. \$499 ⁹⁹ \$449⁹⁹	KITCHENAID DISHWASHER Reg. \$999 ⁹⁹ \$799⁹⁹	MAYTAG TOP WASHER Reg. \$699 ⁹⁹ \$649⁹⁹	GE SELF CLEANING SMOOTH TOP STOVE Reg. \$649 ⁹⁹ \$599⁹⁹	86" LG Reg. \$1999.99 \$1599.99
10 CF CHEST \$399⁹⁹	SIDE BY SIDE STAINLESS STEEL REFRIGERATOR Reg. \$1099 ⁹⁹ \$1099⁹⁹	DELUXE ELECTRIC DRYER Reg. \$499 ⁹⁹ \$449⁹⁹	OVER THE RANGE MICROWAVE OVEN Reg. \$218 ⁹⁹ \$188⁹⁹	DELUXE DISHWASHER Reg. \$399 ⁹⁹ \$379⁹⁹	75" LG Reg. \$999.99 \$799.99
7 CF CHEST \$299⁹⁹					65" LG Reg. \$649.99 \$549.99
5 CF CHEST \$229⁹⁹					55" Smart TV \$299.99
					43" Smart TV \$239.99
					32" Smart TV \$159.99

PRICES GOOD WHILE SUPPLIES LAST
INSTANT FINANCING UP TO \$10,000

Check www.whitcosales.com for special coupons

WHITCO

Hours: Mon.-Sat. 10 am-9 pm
Sunday 10 am-7 pm
140 Main St., Spencer, MA
508-885-9343

Holiday shopping shouldn't mean breaking the bank.

MORSE TREE FARM AT THE LUMBER YARD

NOW OPEN

Cut your own or choose from our large selection of fresh-cut Christmas Trees, Blue Spruce, Black Hills Spruce, Balsam Fir, Fraser Fir, Concolor Fir and Grand Fir.
All sizes 4' to 12'

994 North Woodstock Rd. (Rte 169 South)
Southbridge • 508-764.3231 • www.morse-lumber.com
7 Days a Week from 8:00 am - 6:00 pm

The Morse Family Christmas Tree Farm has been a local tradition bringing happiness and joy to families for over 60 years!

Bay State Savings Bank

Check out our helpful products and services, including our Holiday Club Account.

baystatesavingsbank.com/holiday
508-890-8980 | 508-890-9090 (Español)

Member FDIC
Member DIF

Shopping All Day?

Save yourself some time,
Let us do the cooking!

NOW OFFERING COMPLETE CHRISTMAS DINNERS

Call or stop by for more details.
Rt. 20, 630 Main St. • Sturbridge, MA 01566 • 508-347-7077
Open 7 Days a Week • 11am-7pm - **ENTRANCE IN BACK**

hearthstonemarket1@gmail.com • hearthstonemarketandcatering.com