



Free by request to residents of Sturbridge, Brimfield, Holland and Wales

SEND YOUR NEWS AND PICS TO News@StoneBridgePress.news

Friday, September 4, 2020

Local Scout hopes to become female Eagle Scout

Editor's note: Please note that in keeping with the Scouts' identity protection policies, the last names of the individuals featured in the following story have been withheld from publication.

STURBRIDGE — Erin D., a member of Scouts BSA Troop 163 for girls in Sturbridge, is well on her way to being part of the inaugural class of female Eagle Scouts, and one of the first in Heart of New England Council serving Worcester County.

Erin has been involved in Scouting for all her life. She was in Girl Scouts and would tag along to activities with her brothers who are members of the Boy Scouts of America. As soon as she was old enough, she joined Venturing a Co-Ed program in the BSA for youth ages 14-20. She grew with the program: working on summer camp staff, attending National Youth Leadership Training, and becoming a youth staff member for the course, and is active in the Order of the Arrow (Scouting's



Erin D., a member of Scouts BSA Troop 163 for girls in Sturbridge, is well on her way to being part of the inaugural class of female Eagle Scouts, and one of the first in Heart of New England Council serving Worcester County.

not going to pass up that opportunity, however she knew she would not have enough time to earn the rank of Eagle. Knowing this would be a concern for hundreds across the country the National Office of the Boy Scouts of America, made a one-time special extension for any Scouts (male or female) joining in 2019 who were 16 or older. They would be granted up to two years total, from the date they registered with a troop, to earn the rank of Eagle Scout. Her Scoutmaster applied for this extension, and it was granted by the National Office.

Chrissy, Scoutmaster of Troop 163, noted how hard working, dedicated, and instrumental in helping the troop grow Erin has been.

Chrissy noted "I would not have been as successful of a Scoutmaster without Erin's help and leadership," and added "she has helped to shape, give direction, and set the foundation for current and future Scouts" joining the troop.

Erin travels to and from Fitchburg to be part of the troop, after confusing Sterling with Sturbridge.

"She stuck with it, she could have joined the Gardner or Littleton troop

Please Read **EAGLE SCOUT**, page A6

Brimfield Antique Show canceled for fall

BY KEVIN FLANDERS
STAFF WRITER

BRIMFIELD – For the first time ever, all three weeklong presentations of the Brimfield Antique Show were canceled.

Show field owners and antique vendors were hoping the September leg of the show would be salvaged, but organizers announced its cancellation last month due to COVID-19 concerns. The event joins several other local favorites that were scrapped in 2020, including the Spencer Fair, the Leicester Harvest Festival, West Brookfield's Asparagus Festival, and Brookfield's longtime Apple Country Fair. Many other area craft fairs, fall festivals, concerts, and antique auctions have also had to be canceled, presenting major problems for crafters, vendors, and antiquers.

Please Read **ANTIQUARY SHOW**, page A6

National Honor Society). Something was missing but on February 1, 2019 the last piece was missing no longer.

On Feb. 1, 2019, the Boy Scouts of America opened

their doors to female Scouts, allowing them to join all levels of the program. Hearing rumors of this change coming, Erin was excited to join a troop and disappointed all at

the same time. When the time came, she was on the cusp of being 17, which meant becoming Eagle Scout was out of reach. She was excited to be part of the program, and was

Sports officials adopt “floating season” approach for football

BY KEVIN FLANDERS
STAFF WRITER

REGION – After reaching fourth down in their attempt to save high school football this year, state leaders agreed to a “floating season” approach.

Football, cheerleading, and unified basketball will be played between late February and late April as part of a fourth sports season approved last month by the Massachusetts Interscholastic Athletic Association (MIAA).

Earlier this summer, the Massachusetts Executive Office of Energy and Environmental Affairs (EEA) issued updated reopening stan-

dards for youth and adult amateur sports. The regulations require significant modifications to contact sports, and they would have made it virtually impossible to play football this fall.

"The guidelines are designed to provide instructions to facility operators and activity organizers to help protect against the spread of COVID-19," read a statement released by the EEA.

In the guidelines, sports are broken down into three categories: low risk, moderate risk, and high risk. Due to the frequent physical contact in football, it was assigned to the high risk category along with wrestling, rugby, basketball, lacrosse, ice hockey, cheerleading, martial arts, ultimate frisbee, boxing, and pair figure skating.

Since major changes to the basic game structure of football would have been necessary to satisfy the state's fall reopening regulations, officials decided to move it to late February. By then, MIAA leaders hope a vaccine is in place and regulations on sports can be loosened.

For now, area football teams are scrambling to find ways to keep their skills sharp. Many coaches have not even seen their players since the spring, before the statewide shutdown.

"Once COVID-19 hit and school closed, we have not been able to be together at all," said Christopher Barry, the assistant coach of the Leicester High School squad. "Our school facilities have been off-limits, and we are not able to have contact with our players other than through email or text. This is not the kind of relationship we want to have with our players."

Local football players and coaches are particularly frustrated because almost all other fall sports are allowed to resume this month, with restrictions.

Assigned to the low risk or moderate risk categories, cross country, soccer, field hockey, volleyball, and others will be returning to play, beginning on Sept. 18. Masks and social distancing measures will be heavily employed by players, coaches, and game officials, allowing student-athletes to get back into the game as safely as possible.

But the Friday night lights will stay dark this fall for area football teams, and there are no guarantees that conditions will be improved enough for games in late February. State officials will review COVID-19 data in January and make a determination on whether to proceed with the floating season.

For football athletes and coaches, the uncertainty has been a major challenge. They understand the reasons for the decisions made by state

Please Read **FOOTBALL**, page A6

Cornerstone Bank donates to Old Sturbridge Village

STURBRIDGE — Cornerstone Bank is pleased to announce its recent donation of \$5,000 to Old Sturbridge Village. This donation will support OSV in various ways, including one of the most popular events of the year, the Village Trick or Treat.

Old Sturbridge Village provides a unique, historical atmosphere to our community. When you enter the Village, you are stepping into the largest outdoor history museum in the Northeast. It features costumed historians and more than forty original buildings depicting 1830s rural New England, including homes, a working farm, trade shops, and much more. OSV truly offers a unique experience for people of all ages.

"We are excited to



Pictured, left to right: Cornerstone Bank President & Treasurer and Chairman of the Bank's Charitable Donations Committee (CDC) Todd M. Tallman and Old Sturbridge Village President and CEO James Donahue.

support the Village as a President Business Partner," stated Cornerstone Bank President & Treasurer

and Chairman of the Bank's Charitable Donations Committee Todd M. Tallman. "They provide unique,

one of a kind experiences to our community, and we are especially excited about sponsoring the Village Trick

Please Read **DONATION**, page A7

Courtesy

Bay Path students awarded Horatio Alger National Career & Technical Scholarship

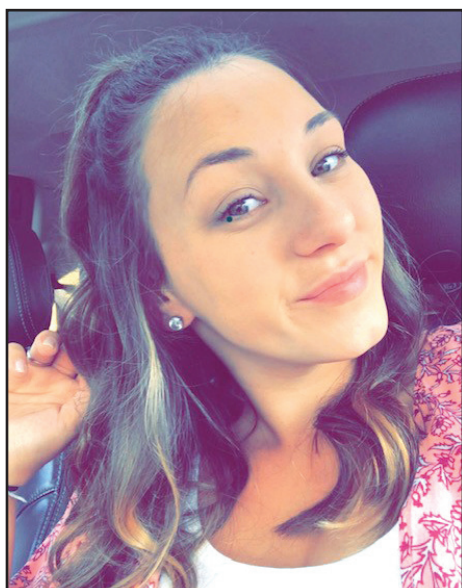
CHARLTON — Doris Agyei of Worcester and Carolyn Jenkins of Cherry Valley has been awarded the 2020-2021 scholarship from the Horatio Alger National Career & Technical Scholarship Program (CTE Scholarship).

Agyei and Jenkins, both full-time practical nursing students at Bay Path RVTHS Practical Nursing Academy will each receive an award of \$2,500 for their practical



Doris Agyei

Courtesy



Carolyn Jenkins

Courtesy

nursing studies. CTE Scholarships are awarded on a competitive basis of verification of good academic standing, high school completion or earned high school equivalency credential, enrolled in a career or technical certificate program leading to employment, attending a not-for-profit post-secondary institution, Pell Grant eligibility, US citizenship, and be under the age of 30.

Agyei works

as a certified nursing assistant (CNA) at Brookdale Senior Lining in Auburn. Jenkins was a CNA at the Overlook. She completed prerequisite classes at Quinsigamond Community College and graduated from Tantasqua Regional Technical High School with an Allied Health Certificate along with her High School Diploma.

Both Agyei and Jenkins are looking at a rigorous ten months of academics and clinicals to complete the program and make positive contributions while continuing their service to the nursing profession. The Horatio Alger Association honors the achievements of outstanding individuals in our society who have succeeded despite adversity and who are committed to supporting young people in pursuit of increased opportunities through higher education.

About Bay Path RVTHS Practical Nursing Academy

Bay Path Practical Nursing Academy offers a 40-week, (10-month), full-time, Monday through Friday, evening program. The program begins mid-August and is completed in late June. Graduates receive a Practical Nursing Certificate and are eligible to take the NCLEX-PN licensure exam. The Bay Path Practical Nursing Academy is fully approved by the: Commonwealth of Massachusetts Executive Office of Human Services of Public Health Board of Registration in Nursing 239 Causeway Street Boston, MA 02114 617-973-0800 www.mass.gov/dph/boards/rn The Bay Path Practical Nursing Academy is accredited by the: Council on Occupational Education 840 Roswell Road Building 300, Suite 325 Atlanta, GA 30350 Telephone: 800-917-2081 www.council.org Bay Path Regional Vocational Technical High School is fully accredited by the: New England Association of Schools and Colleges 209 Burlington Rd, Suite 201 Bedford, MA, 01730-1433 781-271-0022 www.neasc.org It is the Mission of Bay Path Regional Vocational Technical High School to facilitate current, integrated, and rigorous academic and technical vocational programs that prepare students for the ever-changing world of employment and post-secondary education; to provide a school culture that meets the diverse needs of our student body for safety and mental wellness; and to foster student confidence, professionalism, and life-long learning skills that will enable them to become contributing members of our communities.

800-917-2081 www.council.org Bay Path Regional Vocational Technical High School is fully accredited by the: New England Association of Schools and Colleges 209 Burlington Rd, Suite 201 Bedford, MA, 01730-1433 781-271-0022 www.neasc.org It is the Mission of Bay Path Regional Vocational Technical High School to facilitate current, integrated, and rigorous academic and technical vocational programs that prepare students for the ever-changing world of employment and post-secondary education; to provide a school culture that meets the diverse needs of our student body for safety and mental wellness; and to foster student confidence, professionalism, and life-long learning skills that will enable them to become contributing members of our communities.

Charlton native named President-Elect of Massachusetts Bar Association

BOSTON — Attorney Thomas M. Bond has been named president-elect of the Massachusetts Bar Association for its 2020-21 year, beginning on Sept. 1. Bond will serve as a member of the MBA's leadership team alongside incoming President Denise I. Murphy, who will emphasize the MBA's role as an ally to law-



Courtesy

Thomas Bond

yers from diverse backgrounds and build upon efforts to develop the MBA into a well-

ness resource for all Massachusetts attorneys.

Bond is a founder and managing partner of the Kaplan/Bond Group in Boston. A trial lawyer and admiralty lawyer who has specialized in maritime and construction personal injury litigation for 35 years, Bond's trial practice includes admiralty and maritime law, construction, product liability,

Please Read **BOND**, page **A7**

M.L. PARTLOW & SON, INC.
ASPHALT PAVING SPECIALIST
Quality Work Guaranteed
Summer is Here!
 Perfect time for your paving projects
 Commercial Parking Lots
 Residential Driveways
 Roadways • New or Resurfacing
 Berms • Sidewalks
 Commercial Seal Coating • Crack Filling
Call us today for a free estimate
 (508) 347-8956 FAX (508) 347-7099
 Email: MLPARTLOWANDSON@AOL.COM

Septic System Installation
Underground Tank Removal

Your Excavation, Construction and Septic System Specialist

Free Consultations
Call us anytime! 508-765-9003

Custom Home Building
Commercial Construction

Soper
 CONSTRUCTION COMPANY, INC.
hiresoper.com

QUALITY WORK • RELIABLE SERVICE
 FROM A NAME YOU CAN TRUST

308 LAKESIDE

CASUAL WATERFRONT DINING ON LAKE LASHAWAY

308 MAIN STREET EAST BROOKFIELD 774-449-8333 308 LAKESIDE.COM

We are now open with our full menu to dine inside or outside with social distancing

Come dine and enjoy the beautiful view of Lake Lashaway inside or on our outside decks

- Reservations are required to dine in
- Take-out curb-side & delivery available
- Masks are required of all non-toddler guests to enter.

Open 7 days a week Sun - Thurs 11-8 • Fri & Sat 11-9

Please visit our website or Facebook page for our full menu.

Please call 774-449-8333 for reservations, take-out or reserve online 308lakeside.com

BREEZELANDS ORCHARDS

APPLES

The Harvest Is In!

Visit The Farm For:

- Just Baked Pies
- Cider Donuts • Cheese

FREE
 with this coupon and purchase
 Tues.-Thurs. Only

1/2 Dozen Cider Donuts

Southbridge Rd., Warren, MA • 413-436-7122
 Open 10am, - 6pm
 5 min. from Sturbridge - 148 N. Follow signs

VILLAGER ALMANAC

OPEN TO CLOSE

HOLLAND: 413-245-7108
 Mon - Thurs 9:00 a.m. - 12:00 p.m. and 1:00 p.m. - 4:00 p.m.

FISKDALE: 508-347-6486
 Weekdays 9:00-4:30 and Sat. 9:00 -12:00

STURBRIDGE: 508-347-6463
 Weekdays 8:30 - 5:00 and Sat. 9:00 -12:00

BRIMFIELD: 413-245-3451
 Weekdays: 9:00 - 4:30 and Sat. 9:00 -12:00

WALES: 413-245-9808
 Weekdays 8:30 - 12:30 and 2:00 - 4:30 and Sat. 9:00 - 12:00

REAL ESTATE

BRIMFIELD
 \$174,500, 128 Old Palmer Rd, Elmire, Christopher S, to Gonzalez, Jesus G.

HOLLAND
 None

STURBRIDGE
 \$500,000, 9 Meadow View Ln, Connor, Daniel F, and Connor, Sara N, to Miers, Michael G, and Miers, Brianne M.
 \$480,000, 7 Old Brook Cir, Mccarthy, Rory I, and Mccarthy, Jennifer H, to Hornstein, Robert E, and Hornstein, Catherine B.
 \$445,000, 15 Harrington Ct, Peter N Kotsifas 2007 T, and Kotsifas, Peter C, to Harris, Anthony R, and Harris, Tania F.
 \$445,000, 17 Harrington Ct, Peter N Kotsifas 2007 T, and Kotsifas, Peter C, to Harris, Anthony R, and Harris, Tania F.
 \$400,000, 98 Westwood Dr, Maghini, Thomas M, and Maghini, Paula K, to Dube, Nathan, and Dube, Nicole.

How to Use

STURBRIDGE VILLAGER

TO PLACE A RETAIL AD:
 ADVERTISING EXECUTIVE
 MIKAELA VICTOR
 (508) 909-4126
mikaela@stonebridgepress.news

TO FAX THE STURBRIDGE VILLAGER:
 (508) 764-8015

TO PRINT AN OBITUARY:
 E-MAIL: obits@stonebridgepress.news
 CALL: 508-909-4149

SUBSCRIPTION SERVICES:
SUBSCRIPTION SERVICES:
 KERRI PETERSON
 (508) 909-4103
kerri@stonebridgepress.news

TO SUBMIT CALENDAR OR AROUND OUR TOWNS ITEMS:
 E-MAIL: news@stonebridgepress.news

TO SUBMIT A LETTER TO THE EDITOR:
 E-MAIL: news@stonebridgepress.news

TO PLACE A CLASSIFIED AD:
 (800) 536-5836
Classifieds@stonebridgepress.news

OFFICE HOURS:
 MONDAY THROUGH FRIDAY
 8:30AM-4:30PM

VILLAGER STAFF DIRECTORY

EDITOR
 BRENDAN BERUBE
 (508) 909-4106
news@stonebridgepress.news

SPORTS EDITOR
 NICK ETHIER
 (508) 909-4133
nick@stonebridgepress.news

GOT A NEWS TIP, AND IT'S AFTER 5 P.M. OR A WEEKEND?
 CALL A REPORTER'S LINE,
 OR SIMPLY DIAL
 (800) 367-9898
 AND LEAVE A MESSAGE.

A STONEBRIDGE PRESS PUBLICATION

PRESIDENT & PUBLISHER
 FRANK G. CHILINSKI
 (508) 909-4101
frank@stonebridgepress.news

BUSINESS MANAGER
 RYAN CORNEAU
 (603) 677-9082
ryan@salmonpress.news

OPERATIONS DIRECTOR
 JIM DINICOLA
 (508) 764-4325

EDITOR
 BRENDAN BERUBE
 (508) 909-4106
news@stonebridgepress.news

PRODUCTION MANAGER
 JULIE CLARKE
 (508) 909-4105
production@stonebridgepress.news

The *Sturbridge Villager* (USPS#024-955) is published weekly by Stonebridge Press, Inc., 25 Elm St., Southbridge, MA 01550. Periodical postage paid at Southbridge, MA 01550. POSTMASTER: Send address changes to Sturbridge Villager, P. O. Box 90, Southbridge, MA 01550

STONEBRIDGE PRESS PHOTO POLICY
 As a community oriented family of newspapers, Stonebridge Press welcomes photos from readers, business owners, and other outside sources for publication in any of its titles. Any photos submitted for publication become the property of Stonebridge Press, and may be displayed in our newspapers, as well as on our Web site. They may also be made available for resale, with any proceeds going to Stonebridge Press and/or the photo re-print vendor.

Mercado awarded \$5,000 training grant

Bay Path student receive training grant from MassHire Worcester Career Center

CHARLTON — James P. Chabot of MassHire Worcester Career Center announced the awarding of \$5000 in training grant for Bay Path RVTHS Practical Nursing Academy student Luz Mercado of Worcester.

Mercado is a proficient bilingual speaker (English and Spanish) who graduated from Fitchburg High School. She is employed per diem as a Certified Nursing Assistant (CNA) with Ready Link Staffing of Leicester and Intely Care of Quincy.

"We're thankful for the continued support of the MassHire Worcester Career Center," said Bay Path RVTHS Practical Nursing Academy Director, Gretheline Bolandrina MSN Ed, RN, CRRN. "Mr. Chabot helped many of our practical nursing students in the past. The grant will help Luz through the ten months of rigorous training and ensure that she stay motivated and inspired to give her best."

Training grant funds encourage economic growth in the state and allows in additional training for workforce. The Executive Office of Labor and Workforce Development, and Commonwealth Corporation encourage businesses to address workforce



Luz Mercado

Courtesy

training needs. Interested parties are encouraged to visit www.comcorp.org/wtfp to learn more.

About Bay Path RVTHS Practical Nursing Academy: Bay Path Practical Nursing Academy offers a 40-week, (10-month), full-time, Monday through Friday, evening

program. The program begins mid-August and is completed in late June. Graduates receive a Practical Nursing Certificate and are eligible to take the NCLEX-PN licensure exam. The Bay Path Practical Nursing Academy is fully approved by the: Commonwealth of Massachusetts Executive Office of Human Services of Public Health Board of Registration in Nursing 239 Causeway Street Boston, MA 02114 617-973-0800 www.mass.gov/dph/boards/rn The Bay Path Practical Nursing Academy is accredited by the: Council on Occupational Education 840 Roswell Road Building 300, Suite 325 Atlanta, GA 30350 Telephone: 800-917-2081 www.council.org Bay Path Regional Vocational Technical High School is fully accredited by the: New England Association of Schools and Colleges 209 Burlington Rd., Suite 201, Bedford, MA, 01730-1433 781-271-0022 www.neasc.org

STURBRIDGE VILLAGER

ACCURACY WATCH

The Sturbridge Villager is committed to accuracy in all its news reports. Although numerous safeguards are in place to ensure accurate reporting, mistakes can occur.

Confirmed fact errors will be corrected at the top right hand corner of page 3 in a timely manner.

If you find a mistake, call (508) 909-4106 or email news@stonebridgepress.com during normal business hours. During non-business hours, leave a message in the editor's voice mailbox. The editor will return your phone call.

PLACE MOTORS IS PROUD TO SPONSOR

Friday's Child



Photo by Shaanon Cabral

Destinee
Age 12

Hi! My name is Destinee and I want to be a movie star when I grow up!

Destinee is an intelligent girl of Caucasian descent. She likes to play games and is skilled socially. She is open and trusting with adults and is able to communicate her needs. She likes to play outside, do gymnastics, have her nails and hair done, roller skate, and read. She is very athletic and does well in sports. She does not require an additional help in school and is above grade level in reading. She currently resides in a residential program.

Destinee is legally freed for adoption. She has an open adoption agreement of three visits per year with her birth mother. She would do best with a single female, two moms, or a mom and dad. A family with no other children or much older children in the home would be best for Destinee. Her family must be

willing to transport her to Western Massachusetts frequently for visits with her birth mother and brother.

Who Can Adopt?

Can you provide the guidance, love and stability that a child needs? If you're at least 18 years old, have a stable source of income, and room in your heart, you may be a perfect match to adopt a waiting child. Adoptive parents can be single, married, or partnered; experienced or not; renters or homeowners; LGBTQ singles and couples.

The process to adopt a child from foster care requires training, interviews, and home visits to determine if adoption is right for you, and if so, to help connect you with a child or sibling group that your family will be a good match for.

To learn more about adoption from foster care, call the Massachusetts Adoption Resource Exchange (MARE) at 617-6273 or visit www.mareinc.org. The sooner you call, the sooner a waiting child will have a permanent place to call home.



Place Motor Inc.

Thompson Road, Webster, MA 508.943.8012
Massachusetts oldest family owned Ford Dealer - since 1923

www.placemotor.com • "Like Us" on Facebook



The "Right Place" since 1923





**GIVE SAFETY A
Green Light.**

School is in session, and before you can say "red light, green light, one...two...three", a child can dart out of nowhere, and get hurt. Please be prepared to stop and exercise extra caution when driving near playgrounds and schools.

**Please Drive Carefully.
Our Kids Are Depending On You.**



**If it's
important
to you,
It's important
to us.**

StonebridgePress.com

LOCAL SERVICE PROVIDERS

APPLIANCES

Family owned & operated.
Servicing household appliances since 1978.

**Complete Line of
NEW APPLIANCES**



All Major Brands

6 & 12 Months
Financing Available

*Instant Credit • In -shop Repairs
Delivery, Installation & Removal*

Dave's Appliance Inc.
508-867-3122
Parts Hotline 888-229-1027
42 W. Main St., Brookfield, MA
Hours: Mon-Thurs 9-6 • Fri 9-5 • Sat 10-3

CONCRETE READY-MIX

**New England
Ready Mix**



Residential & Commercial
Small & Large jobs

Concrete for Life

**EAST BROOKFIELD, MA
508-690-0052**

*Competitive prices
Family owned & operated*

ROLL OFF DUMPSTERS

PEPIN
WASTE SERVICE
Your Local Roll-Off Specialist



**Weekend
Special**
10 yd. Rental 1 Ton
3 sizes available. Call for pricing.

\$275

Roll Off Containers
Weekend Dumpsters
for the Homeowner
Houses • Attics • Cellars
Construction Sites

10-15-20 Yd.
508-892-4193 • 508-769-6603
Leicester, MA
Fully Insured

To advertise in The Local Service Provider Directory
Contact June at 508-909-4062 Jsima@stonebridgepress.news

Old Sturbridge Academy

Children need healthy meals to learn. Old Sturbridge Academy offers healthy, delicious meals every school day. Breakfast costs \$2; lunch costs \$3. Your children may qualify for free meals or for reduced price

meals. Reduced price is 30 cents for breakfast and 40 cents for lunch.

WHO CAN GET FREE OR REDUCED PRICE MEALS?

If you are in any of the following categories and have not received a

letter from Old Sturbridge Academy
AFTER July 1, notifying you of
your eligibility, you must complete
an application and return it to the
school or mail it to:
Old Sturbridge Academy –
Nutrition Program
2 Old Sturbridge Village Road
Sturbridge MA. 01566

Meals (185%)

AGE/CHILD SIZE	YEAR	MONTH	Twice per month	Every Two Weeks	WEEK	YEAR	MONTH	Twice per month	Every Two Weeks	WEEK
1	\$16,588.51	\$81.5692	\$82	\$819	\$319.60	\$1,968.994	\$90	\$454	\$454	\$454
2	\$22,412	\$1,068.934	\$62	\$431	\$1,894	\$2,658	\$1,227	\$1,227	\$1,227	\$1,227
3	\$28,236	\$2,353	\$177	\$1,086	\$470	\$3,340	\$1,567	\$1,567	\$1,567	\$1,567
4	\$34,060	\$2,839	\$212	\$1,316.65	\$540	\$4,061	\$1,865	\$1,865	\$1,865	\$1,865
5	\$39,884	\$3,324	\$266	\$1,536.67	\$648	\$4,758.4	\$2,302	\$1,675	\$1,675	\$1,675
6	\$45,708	\$3,809	\$305	\$1,758.69	\$765	\$5,046.5	\$2,412	\$1,712	\$2,521	\$2,521
7	\$51,532	\$4,295	\$348	\$1,982.91	\$891	\$5,334.2	\$2,562	\$2,821	\$1,411	\$1,411
8	\$57,356	\$4,780	\$390	\$2,206.103	\$1,027	\$5,622.6	\$2,803	\$3,140	\$1,570	\$1,570
Each additional year										
Family member, add	\$5,824	\$486	\$243	\$224	\$112	\$4,788	\$401	\$346	\$315	\$160

Non-Discrimination Statement: This explains what to do if you believe you have been treated unfairly.

“In accordance with Federal civil rights law and U.S. Department of Agriculture (USDA) civil rights regulations and policies, the USDA, its Agencies, offices, and employees, and institutions participating in or administering USDA programs are prohibited from discriminating based on race, color, national origin, sex, disability, age, or reprisal or retaliation for prior civil rights activity in any program or activity conducted or funded by USDA.

Persons with disabilities who require alternative means of communication for program information (e.g. Braille, large print, audiotape, American Sign Language, etc.), should contact the Agency (State or local) where they applied for benefits. Individuals who are deaf, hard of hearing or have speech disabilities may contact USDA through the Federal Relay Service at (800) 877-8339. Additionally, program information may be made available in languages other than English.

To file a program complaint of discrimination, complete the USDA Program Discrimination Complaint Form, (AD-3027) found online at: http://www.ascr.usda.gov/complaint_filing_cust.html, and at any USDA office, or write a letter addressed to USDA and provide in the letter all of the information requested in the form. To request a copy of the complaint form, call (866) 632-9992. Submit your completed form or letter to USDA by:

1. (1) mail: U.S. Department of Agriculture

Office of the Assistant Secretary
for Civil Rights 1400 Independence
Avenue, SW

Washington, D.C. 20250-9410;
2. (2) fax: (202) 690-7442; or
3. (3) email: program.intake@usda.gov.

This institution is an equal opportunity provider.”

Roger Williams University

BRISTOL, R.I. — The following local residents were among the students who received their degrees in May as part of the Class of 2020:

Catherine Chasse, of Sturbridge graduated Magna Cum Laude with a B.A. in Psychology in May as part of the Class of 2020.

Zackary O'Brien, of Sturbridge, graduated with a B.S. in Finance in May as part of the Class of 2020.

About RWU

With campuses on the coast of Bristol and in the heart of Providence, R.I., Roger Williams University is a forward-thinking private university

P.A.L. of the Week

Sponsored by Cormier Jewelers

Name: Suri
Breed: DSH
Sex: Spayed Male
Age: 4 Mos.



Suri is a very sweet kitten although she is a little shy initially when meeting new people. She has her playful moments but then is content to "chill out" and watch the other "crazy" kittens. She would be a great companion for another kitten. She lived in one of our foster homes where she was very compatible with their cats and a dog. Suri has a lovely disposition and will blossom in a quiet and loving home.



People for Animals League
 www.people4animals.org
 Spencer MA • 774-745-8041

WE WILL BE CLOSED

Sat, Sun & Mon (9/5-9/7)

*to allow our employees time
with family.*

Have a fun & safe holiday weekend!



Cormier Jewelers
& ART GALLERY

A Family Business Since 1949
136 Main Street • Spencer • 508-885-3385
cormierspencer.com
Tues-Fri 10-4; Sat 10-2

Reduce, Re-use, Recycle!



CLUES ACROSS

1. Chop with an ax
4. Where a bachelor lives
7. Indicates near
10. Doctors' group
11. It's just a number
12. Type of bread
13. Lively ballroom dance
15. Charles S. Dutton TV series
16. A way to use up
19. Singular event
21. Home of Disney World
23. Minerals
24. Most insightful
25. Consult
26. In addition
27. Agents of downfall
30. Organizations
34. Supervises flying
35. Bar bill
36. Alfalfa
41. Dish soap
45. Witnesses
46. Ancient Greek City
47. Newspaper bigwigs
50. Discuss again
54. Small group with shared interests
55. Support
56. Popular sportcoat fabric
57. Take hold of
59. Pre-Mayan civilization
60. Woman (French)
61. Wheeled vehicle
62. Georgia rockers
63. Cold War player (abbr.)
64. Pitching stat
65. Attempt

CLUES DOWN

- | | |
|---|-----------------------------------|
| 1. Czech monetary unit | 31. When you hope to get there |
| 2. Arousing intense feeling | 32. Angry |
| 3. Elks | 33. One point east of due south |
| 4. Muscular weaknesses | 37. Respects |
| 5. Before the present | 38. Organize anew |
| 6. Figures out | 39. French wine grape |
| 7. Infinite | 40. Intrinsic nature of something |
| 8. A low wall | 41. Neural structures |
| 9. Silly | 42. Brews |
| 13. Political organization | 43. Where ships take on cargo |
| 14. Used of a number or amount
not specified | 44. Holiday season singer |
| 17. Divisions of the psyche | 47. Shock treatment |
| 18. Denial | 48. Popular average |
| 20. Ancient Iranian person | 49. Products |
| 22. Count on | 51. A type of bear |
| 27. Popular sports league | 52. Utilize |
| 28. Water (French) | 53. Old world, new |
| 29. Partner to cheese | 58. Swiss river |

PUZZLE SOLUTION

		S	S	R		E	R	A		T	R	Y		
		M	M	E		C	A	R		R	E	M		
T	W	E	E	D		N	A	B		O	L	M	E	C
C	O	T	E	R	I	E				E	S	P	O	U
E	D	I	T	O	R	S				R	E	A	R	G
										E	L	E	A	
L	U	C	E	R	N	E				C	A	S	C	A
F	A	V											T	A
N	E	M	E	S	E	S				S	Y	S	T	E
			V	I	D	E				E	L	S	E	
P	Y	R	I	T	E	S				D	E	E	P	E
O	N	E	T	I	M	E				O	R	L	A	N
G	A	L	O	P						R	O	C		
		A	M	A						A	G	E		
H	E	W								P	A	D		



This section reaches 47,000 households
in 7 Massachusetts newspapers.

Call 508-764-4325
or email ads@stonebridgepress.news
for more information

Home & Auto

AUTO BODY / REPAIRS

KEARNS
COLLISION REPAIR

Since 1969
Always Going The Extra Mile For Our Customers

Free Written Estimates • Damage Appraisal
Color Matching Specialists • Rental Car Services
Warranted Work & Repairs
Diagnostics • A/C Repair
Tune Ups & Engine Repair
Brakes • Alternators • Starters • ABS
Alignments • Tires...and more

Major Insurance Referral Shop
Honoring All Insurance Estimates

1734 Providence Road (Rt 122)
Northbridge, MA 01534
Ph: 508-234-5211 • Fax: 508-234-2231
www.kearnscollision.com
Fully Certified • RS# 2678

BEST WINDOW COMPANY

KUBALA
HOME IMPROVEMENT
The Door and Window Experts

MACSL100114 | MAHic150118 | CTHic0619712

Award Winning
High Performance
Windows & Doors

100% FINANCING AVAILABLE | Lifetime Warranty

508-784-1550

ACCREDITED BUSINESS A+ BBB

Builder

GILES CONTRACTING
Building & Remodeling

Peter Giles
28 Years Experience

Custom Homes • Additions • Garages
Remodeling • Decks

Kitchens • Bathrooms • Wood & Tile
Flooring • Roofing • Siding • Windows

MA: 508-450-3913
Email: Gilescontractingllc@yahoo.com
Licensed & Insured in MA & CT
www.allconstructionneeds.com

BUILDER

Todd A. Ethier
TAE
B.U.I.L.D.E.R.
INCORPORATED

Remodeling Expert

◆ FINISHED BASEMENTS
◆ ADDITIONS ◆ GARAGES
◆ SIDING ◆ ROOFING ◆ DECKS
◆ WINDOWS ◆ DOORS
◆ KITCHEN ◆ BATHS

Quality Building Since 1985
Licensed & Insured
508-764-2293 • 774-230-3967

Concrete

CONCRETE QUICK, LLC

No Minimum Purchase
Buy Only What You Need

— SERVING CENTRAL NEW ENGLAND —
WHY CONCRETE QUICK?

- Buy ONLY what you need
- Flexibility — according to your schedule
- Custom Mix / Pour on the job... no "Hot-Loads"
- Less Expensive than bagged and large mixers
- No Job too small • No Minimum Quantity to purchase
- Cost Effective • No Waste • Environmentally Friendly

NO LOAD TOO SMALL!
WEEKEND Pours Available!
(508) 868-3946 ask for Clyde
ConcreteQuickLLC.com

Granite & Marble

SHREWSBURY
MARBLE & GRANITE, INC.

BUY FACTORY DIRECT & SAVE

50 COLORS • \$39 per sq. ft. Installed
(40 sq. ft. or more) Cannot be combined with other offers.

Biggest Selection of Marble,
Granite & Quartz of ANY Fabrication Shop
300 Colors To Choose From
Please call for appointment 508-523-3769

508-842-9800 • shrewsburymarbleandgranite.com
620 Boston Turnpike (Rte 9 E), Shrewsbury, MA
(1/4 mi. east of Home Depot — Big Blue Bldg)
Mon-Thurs 8-5, Fri & Sat & 9-4

Gutters

GARY'S GUTTERS
~ Locally Owned ~

Need new gutters...
Look no further!

I'll beat any of my competitor's prices by giving
you back 10% of your hard earned money
off their lowest price **guaranteed!**

COMMERCIAL • RESIDENTIAL

FREE Estimates
50% off leaf guards
with gutter
installation.
Offer exp. 9/30/20.

Fully Insured ~ Installations ~ Cleaning ~ Repairs
508.353.2279
gotogutterguy.com

Oil & Propane

AMERICAN DISCOUNT OIL & PROPANE

Need propane or oil right away?
Call American today!

OIL PROPANE
10¢ Off 20¢ Off

PER GALLON (125 GAL MIN) | PER GALLON ON YOUR NEXT FILL UP (MIN 75 GAL)

With coupon. One coupon per customer. Exp. 9/30/20. Cannot be combined with any other offer or on previous purchases or fuel assistance program.

Order online
Americandiscountoil.com
413-289-9428
1182 Park St., Palmer, MA 01069

Paving

G. COOPER PAVING
New Beauty Blacktop
413.544.5381

DISCOUNTS ON REFERRALS! FAMILY OWNED & OPERATED

SENIOR DISCOUNT 10% OFF \$200 OFF NEW DRIVEWAY INSTALLATIONS

DRIVEWAYS • PARKING LOTS
SEALCOATING • STONE
HOT TAR CRACK FILL

"Big Or Small, We Do It All!"
FREE ESTIMATES

Power Washing

EXTERIOR HOUSE & SOFT ROOF WASHING

REMOVES HARMFUL:
Mildew • Moss • Algae • Oxidation • Dirt & Pollutants
FROM:
Vinyl • Aluminum • Wood • Brick • Painted • Stained

GREAT FOR: Before Paint Prep
Cedar Restoration • Decks • Patios
Stairs & Walkways • Foundations

HI-TECH MOBILE WASH
~ Est. 1987 ~

Commercial & Residential

100% Satisfaction Guaranteed or you owe nothing!

PLEASE CALL
1-800-696-4913 • 508-248-4638
FOR MORE INFORMATION OR FOR A FREE ESTIMATE
www.hitechmobilewash.com

Stump Grinding

MILLER STUMP GRINDING

Asian Longhorn Beetle Certified
Fully Insured

**REASONABLE RATES
PROMPT SERVICE**
ROD MILLER • NICK MILLER
OWNERS / OPERATORS
508-688-2159

WASTE REMOVAL

TOM BERKOWITZ
~Est. 1980~

TRUCKING INC.

- Residential • Commercial
- Hauling • Recycling
- Demolition • Transfer Station

Northbridge, MA
508-234-2920
tomberkowitztruckinginc.com

ELECTRICIAN

TERRENCE W. ALDEN JR.
LICENSED ELECTRICIAN

New Construction
Remodelling
Kitchen & Bath
Service Updates

W. Brookfield, MA
1.774.230.9606
Talden1987@gmail.com

Fully Insured
Accepts credit card
payments & free online
bank transfers
Licenses:
MA-13705-21777A,
NH-13932M, RI-B013781

Electrician

BRIAN WOOD

Master Electrician
Residential • Commercial
o: 508.764.3925
c: 508-505-0111
35 Years of Experience
Lic#15885A | 29931E
Fully insured
I specialize in:
New Construction
Renovations
Pools and Hot tubs
Lighting (int. & ext.)
Repairs and Maintenance
Bpwelec@gmail.com
Facebook:
BrianWoodElectrician

GUTTERS

GUTTERS

- Cleanings
- Repairs
- Installations

508-867-2877
508-754-9054

A. Eagle Gutters
aeaglegutters.com

A+ BBB ACCREDITED BUSINESS

Handyman

No Job Too Small
Home Improvement

—Insured—
MA Reg #174661

- General Carpentry
- Laminated Floors
- Remodeling
- Kitchen, Bath & Cellar
- Painting
- Handyman Services
- Floor Leveling
- Power Washing and MORE!

See Our Work Online
nojobtoosmallhomeimprovement.com
Tel. 508.414.7792
Sturbridge, MA

HANDYMAN

MAIN STREET SERVICES

Handyman
Drain Clearing • Plumbing
Carpentry
Pressure Washing
Small Jobs to Total
Renovations

*If we don't do it,
you don't need it done.*

Tradesman for over 40 yrs.

Senior Citizen (65+) DISCOUNT

Call Rich for your next project
508.963.1191

Home Improvement

BONETTI'S
Home Improvement

Roofing
Siding
Decks
Remodeling
Windows
Doors
Basement Finishing
Gutters Cleaning
Pressure Washing
Painting Landscaping

Over 25 Years Experience
Residential Specialist
Licensed and Insured
128231
508-347-4906
Cell 508-688-0072

Masonry

C&J

MASONRY HARDSCAPE
RETAINING WALLS
CHIMNEY REPAIR
PATIOS
FOUNDATION CRACKS
PRESSURE WASHING
WATER PROOFING
CORD WOOD
PROPERTY MAINTENANCE
DELIVERY OF AGGREGATE

Brian French
(413)222-5542
frenchyn45@gmail.com

Painting

G.J. LEDUC PAINTING

Interior,
Exterior
Wallpapering
And
General Repair
Fully Insured

40 years experience

CALL
508-764-8548

PAINTING

Scott Bernard's PRECISION PAINTERS

Finest
Craftsmanship
Since 1979

Interior-Exterior
Paints, Stains,
Wallpaper and
Fine Faux Finishes

Satisfaction
Guaranteed

Free Estimates
774.452.0321



Pest Control

ACCURATE PEST CONTROL

Full Pest Control
Services

Over 28 yrs.
experience

Reasonable Rates
Owner Operated

508-757-8078
Ask for
David or Jason
Hight
Auburn MA

Plastering

Glenn LeBlanc Plastering

Specializing in
small
plastering jobs;
ceilings,
additions,
patchwork and
board hanging

Over 30 Years Experience.
3rd generation.
CALL
508-612-9573

PLUMBING

JOHN DALY Plumbing

Water heaters, Faucets,
Toilets, New pex water piping,
Outside hose connections
replaced or added,
Dishwashers, Garbage
disposals, Water filters,
Tub & shower valves,
Tub & shower replacements
Any repair or
replacement needed.

Buy your own fixtures &
faucets, or I will supply.
Serving all of
Worcester County
Lic.#MPL-21763
Since 1988
Call John 508.304.7816

We are home owners'
plumbers!
jdraman714@aol.com

ROOFING

David Barbale ROOFING

Roofing/Gutters
Repair Work

Fully Licensed
and Insured

MA LIC #CS069127
MA HIC. LIC #1079721
INS. #CAC032585

C: 508-397-6709
O: 508-248-6709
davidbarbale.com

Roofing

SAUNDERS & SONS ROOFING

When you need a roof,
hire a roofing company,
that's what we do!

Call Bill Toll-Free
1-866-961-Roof
508-765-0100

Lifetime material warranty
& 25 yr. labor warranty
available

MA Reg #153955
CSL #095459
CT-HIC #0638641
Fully Insured,
Free Estimates

Family Owned and Operated
Now Accepting All
Major Credit Cards

ACCREDITED BUSINESS A+ BBB

ROOFING

GUARANTEED
Roofing & Building
Maintenance LLC

Roofing, Siding,
Gutter and
Gutter Cleaning

Contact:
Daniel Truax
508-450-7472
gbmaintco.com

Senior Citizen Discount
Credit Cards Accepted
Over 30 years of satisfied
customers
Fully Insured — Free Estimates

A+ Rating BBB
MA HIC Lic #146620
MA CSL #099487

This section reaches 47,000 households in 7 Massachusetts newspapers.

EAGLE SCOUT

continued from page 1

at the time, but she chose us even after realizing the mistake, and we're so happy she did," the Scoutmaster said.

Erin's project is putting together "Comfort Kits" for teenage youth transitioning into D.C.F care.

"I knew that there was a need for these kids and knowing that they would be a help to everyone who needs them was a bit push for me," she explained.

Taking COVID-19 into consideration she wanted to make sure her project was safe for everyone involved.

These kits, she said, "will provide them with the necessities they need, and that are sometimes too embarrassing to ask for."

Her journey has not been without some bumps in the road. Every step of the way she set deadlines for herself. If she was not X rank by X date, then her journey would end. Sometimes she would be excited and ready to go, other times it seemed like another thing added to her plate. 2019/2020 school year was her senior year of high school, she was taking five AP, one honors class and was very active in Best Buddies, Volleyball and National Honor Society. Chrissy noted they had finally hit a "sweet spot" then COVID-19 hit bringing everything to a halt.

"I had so many concerns for her, what about camping nights, the skills she needed to teach for rank advancement, the community service hours, merit badges and everything else she still needed to do," she said.

Together, they came up with a game plan, to date Erin is just 4 merit badges short, she needs to complete her Eagle Project and finish serving out her term as Junior Assistant Scoutmaster.

Being rushed, and having been granted an extension, Chrissy was concerned with how quickly Erin would have to get through everything.

After some reflection, she said, "The thing that gets me most is as much as Erin wants Eagle, she still made it about the program. Savoring each event and

activity rather than just going through the motions and doing what needed to be done. There is a big difference between earning ranks and merit badges for Eagle and truly understanding the purpose, and taking advantage of, the program while working ranks and merit badges. It adds so much to the Scout's experience when the program is experienced."

"I personally am excited to have the opportunity to earn Eagle, my older brother is an Eagle Scout and my younger brother is working to earn his as well," Erin noted. "It's a huge accomplishment to become an Eagle Scout, but to add being a girl and being crunched for time on top of it, I think it is very impressive" she said with a smile. The National Office of the Boy Scouts of America is planning a special recognition for this "inaugural class" of Eagle Scouts for all those who earn eagle by January 31, 2022. Erin is hoping to be part of this inaugural class of Eagle Scouts.

Erin has set up a donation drop box at the Bethlehem Lutheran Church, 345 Main St. in Sturbridge. If you would like to help with her project please donate items between Sept 1 and Sept. 31. Leave a note with the items you left, how many of each, and your name. Erin needs to keep track of how many people donate and how many items are donated by each person. The box is checked daily by Scouts in the troop to ensure it does not overflow and to ensure items are not lost/stolen.

Items being collected for the "Comfort Kits" include: toothbrush, toothpaste, bar soap, shampoo, conditioner, razors (male and female), deodorant (male and female), lotion, fabric freshener, feminine hygiene products (pads and tampons), make-up and face wipes, hair elastics and headbands, hairbrush and comb, notebook and pen, hand sanitizer, and face coverings.

If you have any questions, or would like more information about Erin's project, contact Chrissy Scoutmaster of Troop 163: ChrissyCSM163@gmail.com Erin's contact information is not provided publicly as she is still considered a youth in the program.

ANTIQUE SHOW

continued from page 1

The loss of the May, July, and September antique shows in Brimfield has been a crushing blow for countless local business owners, antique dealers, and the community at large. From restaurants and hotels, to area shops and recreation centers, everyone has felt the impacts of lost business.

But even with the sting of a forfeited year still fresh, local owners are already turning the page and focusing on 2021.

"It was shocking in May when they canceled, but then, as things progressed, we realized this was the only decision the town could make," said Pam Moriarty, who owns the Heart O' The Mart

showgrounds with her husband, Don. "It would not have been fair to dealers, owners, or guests to have such a large event with everything going on right now. Even though it broke our hearts, we agreed with the decision and understand why it was made."

Looking ahead to next year, owners understand that the 2021 lineup of vendors could feature major changes. On the heels of a lost year of revenue from physical shows, countless antiques dealers nationwide are struggling to stay in business. Unsure if large shows will feature the same attendances next year, many owners are shifting their business models to e-commerce opportunities. Others have already had

to surrender their businesses and pursue work elsewhere.

In Brimfield, it's hard to predict whether conditions will be favorable enough in May for the first show of 2021. Owners hope the COVID-19 vaccine will make quick and lasting progress, but there are no guarantees that conditions will warrant unrestricted international travel.

"It will be a challenge to get everything back up and running after this long. We all have to work hard to bring vendors back and find a new normal," said Darlene Burns, who has owned the Crystal Brook showgrounds for eight years. "We have a lot of customers who are international, and no one knows what the travel situation will be."

One of the priorities for owners throughout the summer has been to maintain strong lines of communications with vendors, dealers, and town officials. Many owners believe that although the 2021 shows may not have the same attendance as previous years due to lingering COVID-19 concerns, vaccine hesitance, and potential international travel restrictions, the atmosphere will nonetheless be one of great joy and gratitude.

"The response from our dealers has been very understanding. They are looking forward to a great year next year," Moriarty added. "Everyone will be looking to get back here - it will be like a reunion."

Information on next year's events will be posted at www.BrimfieldAntiqueFleaMarket.com.

FOOTBALL

continued from page 1

officials, but that doesn't make the situation any less frustrating.

"We appreciate all of the work and dedication those people put in to make the best decision for our students to have a football season and to be safe," said Barry, whose team

went 12-1 last year and captured the D7 Central Mass. crown. "There are still so many questions that remain unanswered, which is completely understandable during this unprecedented time."

Added Barry, "Whatever the next steps are, we look forward to seeing our kids again. We have a great group of seniors we want to honor

Please Read FOOTBALL, page A7



Community Connection



Do It 4 U Studio

SEPTEMBER SPECIAL!
\$50 Unlimited Zumba
Live + Livestream Classes Coming soon:

Prerecorded Classes
Fill your cup! Have fun!
With me, Melanie Silva
One hour that's just for you!

Follow us on Facebook:
MS Zumbateer for all updates
Located at: 369 Main Street, Ste 5
Spencer, MA 01562 (508) 864-9224

MOVING?



FRESH START
THE MOVING CREW

CALL US TODAY
508-868-4291

www.FreshStartMovingCrew.com

MDPU# 31690 | USDOT# 2407387 | MC# 828326



Open Labor Day 7-30-6

570 MAIN STREET • RT. 20 • FISKDALE, MA
TEL: 508-347-0116 • FAX: 508-347-6985

SPECIALS GOOD 9/7-9/13

GOLDEN RIFE BANANAS .49¢ lb.	BOAR'S HEAD OVENGOLD TURKEY \$7.99 lb.	LARGE CRISP GREEN PEPPERS .99¢ lb.
5LB BAG RED POTATOES 2/\$5.00	CERTIFIED ANGUS GROUND CHUCK \$3.99 lb.	GREEN BARTLETT PEARS .99¢ lb.

Mon. - Fri. 8:30 - 7:00 • Sat. & Sun. 8:30 - 6:00
We reserve the right to limit quantities



508-248-9797

Don't Pay Too Much for Propane

PROPANE	PRICE PER GAL.	Tanks Filled to 80%
75-150	\$2.20	
150-300	\$1.85	
300-500	\$1.65	
500 PLUS...	CALL OFFICE	Driver Discretion

DON'T PAY TOO MUCH FOR OIL!

- Monday price 8/31/20 was **\$1.59** per gallon* 100 gallon minimum
- Call for the most up to date daily price or visit us at www.charltonoil.com

"Call Us First!"
*prices subject to change



Are you paying too much for your **auto insurance** because you don't have a **renter's policy?**

Call or email today



We offer policies for
RENTERS
AUTO
HOME
BUSINESS
LIFE
DISABILITY
MOTORCYCLE
BOAT

You'll have peace of mind knowing our Insurance Professionals have your back!

Not Your Ordinary Greenhouse



"We're Always Growing..."

Your Fall Planting Headquarters
A Great Time to Plant!
Mums • Cabbage • Kale • Asters
Gourds • Pansies • Millett

Pumpkins Coming Soon!
10" Select Topiaries Buy 1 Get 1 Free
25% OFF TREES & SHRUBS
PERENNIALS - BUY 1 GET 1 FREE!
(Higher price prevails) • While Supplies Last

Lush houseplants in our greenhouse!
Open 8-5 daily

Celebrating 42 years
Gift Certificates Available
508.867.2218

www.lamoureuxgreenhouses.com
9 Schoolhouse Rd., Brookfield, MA



The Jewelry store where you buy with confidence

WE BUY GOLD

Specializing in Custom Designs
All types of Jewelry Repairs

MASTER JEWELERS™
BRILLIANCE YOU DESERVE®

409 Main St. Southbridge, MA
morinjewelers.com • 508-764-7250
Located at CVS Plaza

COMMUNITY SPECIAL

This size ad for only **\$35/wk** for 14 weeks

Receive A Free 1/2 Page Ad

CALL JUNE AT
508-909-4062
FOR MORE INFORMATION



BAIR INSURANCE AGENCY

www.bairinsurance.com
edwardbair@bairinsurance.com

~ Online Quotes ~

Serving area towns since 1980
58 A.F. Putnam Road
Charlton, MA 01507
p: 508-248-4204 f: 505-248-1199
Conveniently located near scenic Buffumville Lake

MAPFRE TRAVELERS CONCORD GROUP INSURANCE

Your area guide to Buying, Dining & Shopping Locally!

Support Close to Home!

Taking care of even the smallest of pets



Make your appointment today!
Open 6 days a week - 774-321-6222
PerfectPawsAuburn@gmail.com
889 Southbridge Street, Auburn MA 01501



DON'T TEXT AND DRIVE

ADVERTISING WORKS!

BOND

continued from page 2

automobile, personal injury, and general liability. He has tried many cases, and has argued or briefed more than 25 cases before various courts of appeal, including the U.S. Supreme Court, the U.S. Court of Appeals for the First Circuit, the Supreme Judicial Court, the Massachusetts Appeals Court, and the Supreme Courts of Connecticut and New Hampshire.

In addition to serving as MBA president-elect, Bond is a member of the MBA's Executive Management Board and Budget & Finance Committee. Over the past year, Bond has served as co-chair of the MBA's COVID Response Task Force. He has also served as a chair of the MBA's Judicial Diversity Task Force and as chair of the MBA's Judicial Administration (JA) Section, where he also chaired the section's Ad Hoc Subcommittee on Diversity, which successfully introduced a resolution at the MBA's House of Delegates supporting efforts to increase diversity in the court system. Bond has been a frequent moderator of the JA Section's "View from the Bench" CLE series, which features judges as panelists.

Outside the MBA, Bond is a member of the Massachusetts Academy of Trial Attorneys (MATA), where he has served on its Executive Committee and Board of Governors. He received MATA's President's Award in 2014. He is also a member of the American Association for Justice. A frequent lecturer on

admiralty law at Suffolk University Law School, Bond has also lectured locally at Massachusetts Continuing Legal Education (MCLE), the Boston Bar Association and the New England School of Law, and nationally before the Tulane Admiralty Law Institute in New Orleans, the American Association for Justice and the American Trial Lawyers Association.

Bond graduated summa cum laude from Northeastern University in 1982, and from Suffolk University Law School in 1985. Bond grew up in Charlton, Mass., and graduated from Shepherd Hill Regional High School in 1977. A lifelong Massachusetts resident, he has lived in Hopkinton for 25 years, where he still resides with his wife of 35 years. They have two grown daughters.

The MBA's leadership team for the 2020-21 year includes President Denise I. Murphy, President-Elect Thomas M. Bond, Vice President Grace V.B. Garcia, Treasurer Damian J. Turco and Secretary Victoria Santoro Mair. Martin W. Healy is the MBA's chief legal counsel and chief operating officer. Full officer bios are available at www.massbar.org/officers.

Incorporated in 1911, the Massachusetts Bar Association is a non-profit organization that serves the legal profession and the public by promoting the administration of justice, legal education, professional excellence and respect for the law. The MBA represents a diverse group of attorneys, judges and legal professionals across the commonwealth.

DONATION

continued from page 1

or Treat. It's a fun time for kids to celebrate Halloween while exploring the Village."

To learn more about all that the Village has to offer, including this year's Village Trick or Treat, please visit osv.org.

About Cornerstone Bank

Cornerstone Bank is an independent, mutual savings bank serving the residents, businesses, and communities throughout

FOOTBALL

continued from page 6

in their final season, 24 freshmen who are interested in joining our program, and players in grades in between hungry to have another winning season and defend our titles."

Beginning on Sept. 18, football teams will be able to hold modified practices. Several restrictions will be in place, and players won't be

able to participate in hitting, blocking, team meals, and other activities. For coaches, the main goal is to keep their athletes physically conditioned and mentally sharp through the fall and winter.

"To get back to some normalcy would be best for students' mental and physical health," Barry said. "We are a football town, and cannot wait until we get back together again."

Every 8 minutes, we respond to a disaster.

American Red Cross

HELP NOW

FAMILY DINING & GIFT GUIDE

Visit these fine local establishments for great gifts, food, beverages & take-out too!

TAKE OUT.

To advertise on this page, contact June at jsima@stonebridgepress.news or 508-909-4062

NOW OPEN FOR DINE-IN AND TAKE OUT!

Spencer Country Inn

Buy Entree Get 1 1/2 price (dine-in only) Cannot be used on holidays or private parties. With this ad. Exp 9/30/20

Reservations accepted. Nightly dinner specials.

SUNDAY BRUNCH 10am-1pm (plus tax & gratuity)
All You Can Eat \$15.95

Fish N' Chips To-Go - Fridays Only \$11.95

500 Main St., Spencer, MA 508-885-9036
www.spencercountryinn.com

Lunch: Thur, Fri, Sat 11:30-2:00
Dinner: Thur, Fri, Sat 5:00-Close
Sun. Brunch: 10am-1pm

~ Function Rooms 10-250 Guests ~

WINDOW HOT DOG SPECIAL
2 Coney Island Dogs, chips & drink \$6.00 • 11:30-2 daily

Hankee Diner

NEWLY RENOVATED!

Open for dine-in, outdoor seating, take-out
Mon - Sat 7am-2pm; Fri till 8pm; Sun 7am-1pm
Breakfast served all day
Lunch 11:30-2pm • Dinner Fri 2pm- 8pm (Face mask required to enter)

Weekly Specials

Mon - Chicken Parm w/rigatoni	\$7.95	Thurs - Baked Meatloaf w/mashed & gravy	\$8.95
Tues - Roast Pork Loin w/mashed & gravy	\$8.95	Fri - Clam Roll w/FF & tartar sauce	\$8.95
Wed - Rigatoni & Housemade Meatballs	\$7.95	Sat - Philly Cheese Steak Bomb w/FF	\$8.95

Stop by and pick up a menu today!

16 Worcester Rd., Charlton, MA 01507 508-434-0358

NOW OPEN to Dine-in or Take-out!
BREAKFAST • LUNCH • DINNER

APPLES & PORK

Come see how we combine them for breakfast, lunch, and dinner specials this month!

Masks required to enter. Thank you

Call 508-867-6643 or check out our Facebook page for updates.

Thank you for your business!

E.B. Flatts

Rte 9 E. Brookfield • 508-867-6643
Breakfast & Lunch Daily • Dinners - Thurs, Fri, Sat

CHARLIE'S

Diner • Bar • Grill • Functions

WE ARE RE-OPENED FOR INDOOR DINING!

BREAKFAST • LUNCH • DINNER

Friday & Saturday Night After 4:30
Lobster & Steak Tip Sauté
Prime Rib

Full Menu - Take out still available

5 Meadow Rd., Spencer, MA 01562
Gift Cards 508-885-4033
www.charliesdiner.com

Hours: Sun, Mon & Wed 8-8 • Thurs, Fri, Sat 8-9

To advertise on this page call us today at 508-909-4062

five loaves bakery & cafe

3 COURSE MEAL SPECIAL
Starts at 2pm Tuesday-Thursday-\$25.00
FULL DINE-IN ~ WITH RESERVATION

EVERY FRI & SAT NIGHT FULL DINNER SERVICE
~RESERVATIONS ONLY~
Specials listed daily on Facebook and on our Website
Please wear masks to enter

FRESH BAKED BREAD • PARTY PLATTERS
PASTRIES, COOKIES & BARS

13 Mechanic St., Spencer, MA 01562
508-885-3760 fivebakesbakery.com
Closed Sun & Mon • Tues 10am-3pm
Wed & Thur 10am-7pm • Fri & Sat 10am 8:30 pm

— BYOB —
WE MAKE OUR OWN BREAD!

Salem Cross Inn
RESTAURANT & TAVERN

260 West Main Street, West Brookfield, MA 01585

OUTDOOR DINING
Reservations are required; please wear masks upon entering

TAKE-OUT IS AVAILABLE
Order from our Website or Facebook page

Hours: Thursday, Friday & Saturday from 4:00-8:00;
Sunday noon-6:00 pm

~ we will serve inside if it rains ~ We are looking forward to seeing you all again!

www.salemcrossinn.com (508)867-2345

YOUR AD HERE

Hankee Diner

Open for dine-in, outdoor seating, take-out

Mon - Sat: 7am-2pm; Fridays till 8pm: Sun 7am-1pm
Breakfast served all day • Lunch 11:30-2pm • Dinner Fridays 2pm- 8pm (Face mask required to enter)

YANKEE BREAKFAST CLASSICS

Choice of Toast: White, Wheat, or Rye
2 eggs w/ choice of toast\$4.25
w/ ham, bacon, or sausage links.....\$6.25
w/ house made corned beef hash\$7.75
Side: Home fries or hash browns.....\$1.75
Side: House made corned beef hash.....\$5.50

Breakfast Bundle Wrap
Scrambled eggs, home fries, bacon & American cheese w/ salsa & sour cream\$9.95

Porky's Pride
Served w/ home fries or hash browns & toast
2 eggs w/ ham, 2 strips bacon, & 2 sausage links\$9.95

California Scramble
Served w/ home fries or hash browns & toast
2 eggs scrambled w/ ham, peppers, onions & cheese \$8.95

Eggs Benedict
Served w/ home fries or hash browns
2 eggs poached, Canadian bacon, house made Hollandaise sauce on an English Muffin.....\$8.95

Danish
Ask your servers for today's variety.....\$1.95

FROM THE GRIDDLE
Single buttermilk pancake.....\$3.50
Buttermilk pancakes (2).....\$5.50
Blueberry or Chocolate Chip (2).....\$7.00
Texas style French toast (3).....\$5.50

BREAKFAST SANDWICHES
Served on a grilled bulky
2 eggs & American cheese\$3.95
2 eggs, bacon & American cheese.....\$5.95

OMELLETES
Served w/ home fries or hash browns & toast
Plain: 3 eggs & American Cheese\$6.95
Vegetarian: Spinach, tomato, mushrooms, onion, peppers, & American cheese.....\$10.25
Greek: Spinach, tomato, feta cheese, & kalamata olives \$9.95
Meat Lovers: Bacon, sausage & ham.....\$9.95

SALADS
Garden: Tomatoes, cukes & red onion.....\$3.95
Add fresh Albacore white tuna salad or house made chicken salad\$5.95

BURGERS
6 oz fresh ground beef hand formed daily
Served w/ FF or cole slaw
Cheeseburger\$7.95
Bacon & Cheese.....\$8.50
Bacon & Bleu cheese crumbles\$8.95
Mushroom & Swiss\$7.95

LUNCH COMBOS 11:30-2:00
(includes chips & can of soda or bottled water & tax)
Honey BBQ burger, Swiss cheese, bacon on roll.....\$9.50
2 Coney Island grilled hot dogs.....\$6.00
Cheeseburger on roll\$8.50
Double cheeseburger w/ bacon on roll\$11.50
Ball park sausage w/ peppers & onions.....\$10.00


HOUSEMADE COMFORT MEALS
Marinated Steak Tips w/ mashed & gravy\$12.95
American Chop Suey\$9.95
Housemade Meatloaf w/ masked, gravy & veg.....\$10.95
Shepherd's Pie.....\$9.95
Swedish Meatballs w/ dutch noodles.....\$10.95
Yankee Pot Roast w/ masked & veg.....\$11.95

FRIDAY FISH FRY Fridays Only 11:30am - 8:00 pm
Includes Cup Clam Chowder, FF, Cole Slaw & Tartar
Whole Belly Fried Clams.....\$18.75
Deep Fried Sea Scallops\$18.50
Fried Scallops Roll.....\$12.95
Fish & Chips (Haddock)\$11.95
Fried Shrimp Basket w/ Cocktail Sauce.....\$13.95
Fried Seafood Plate.....\$22.95

16 Worcester Road, Charlton, MA 01507
508-434-0358

Cash only - ATM inside

Find us on: **facebook.**



Serving Sturbridge, Brimfield, Holland and Wales

PO Box 90, Southbridge, MA 01550
Telephone (800) 367-9898
Fax (508) 764-8015
www.StonebridgePress.com

FRANK G. CHILINSKI
PRESIDENT AND PUBLISHER

BRENDAN BERUBE
EDITOR

EDITORIAL

Happy trails

Actress Shirley MacLaine once wrote “Fear makes strangers of people who would be friends.”

This week, the topic of strangers has been at the forefront of our minds. Having met several strangers on the hiking trails over the past few months has opened up an appreciation for others that has always been there, yet as of late, for some reason, these meetings have become more meaningful. Simple conversations can lead to an unraveling of several rewarding conversations.

They always say there's no such thing as a solo hike, and it's true, for the most part. While hiking the Mount Cabot loop during a recent excursion to our friendly northern neighbor New Hampshire, a chance meeting with a teacher from the southern part of the Granite State took place. It was interesting to hear his views on his school re-opening plan and how he handled remote teaching. According to him, he sort of “rolled with it.” On that same trail, a fortunate meeting with Ray took place. A CPA from Boston who was on his 47th of New Hampshire's 4,000 footers, was in the right spot at the right time. Being five feet, one inch in height, the hop from one boulder to the next on top of The Horn, would not have happened without a boost from Ray. Clapping his hands together and lifting me from one perch to the next made for a great lunch on top of the mountain. His tales of climbing to the Mt. Everest base camp and his ski adventures all over the world was the perfect accompaniment to a well deserved peanut butter and jelly sandwich.

A 66 year old veteran named Brian was the perfect person to head down Mount Willard with. After the storm wreaked havoc on the trail, the trek down was, well, sort of like an obstacle course. Brian (and his dog) shared so many eye-opening stories about his time serving in the military. I was proud to have him by my side and honored he shared his story.

On top of North Sugarloaf, a Spanish teacher with her family topped the list. They were in from Mass for the weekend. They shared their love of New Hampshire with the best humor and were so appreciative of the nature around them. The family has decided to make lemonade out of lemons and are choosing to get their elementary age students out into the mountains as much as possible, the kids said they love every minute of it.

When hiking sections of the Appalachian Trail, you will meet a ton of thru hikers, each coming with a unique name. This past week, while hiking the Beaver Brook Trail up to Mount Moosilauke, “Whole Foods,” “Square Peg” and “Sherpa” each had amazing tales. Whole Foods is from P.A. And was hiking south to Georgia, in a kilt. Square Peg stopped to chat as he was making his way down and told us, this was his third time completing the AT. Sherpa told us that the wind at the top literally blew him over. He was a tiny thing, and after summiting, we believed him.

On top of Mount Nancy, a family surprised 'Dad' for his 50th with party hats and cupcakes. It was so neat to be a part of that. Impromptu parties are the best. This is a story that deserves it's own and will be forthcoming in the next few months.

Whether you chat someone up on the trails or in line at the store, you never know what you will learn. Some people will engage, others won't. It's a coin toss and that can be a fun game all it's own.

If you have a fear of talking to strangers, do it anyway. When you do something repeatedly the fear tends to dissipate and your conversation techniques will feel more natural. If you imagine that the person is already your friend, you'll treat them as such and this approach can alleviate an awkward feelings.

In the words of Anais Nin, “Each friend represents a world in us, a world not born until they arrive, and it is only by this meeting that a new world is born.”

OPINION

VIEWS AND COMMENTARY FROM STURBRIDGE, BRIMFIELD, HOLLAND AND WALES

Are you part of a herd?

Life is an incredible journey, full of twists and unexpected turns. We are herd animals and were not created to make this journey alone.

As most of you know, I was shocked in February to be diagnosed with Stage 4 Stomach Cancer. It was unexpected and certainly unwelcomed but it's now part of my life's journey. I embrace the reality and fight for time. As I've said before, there is no cure and so I'm told I can't beat this but I'm fighting to go the distance. I believe I'll still be here, writing this column in five years.

My diagnosis isn't all negative. I've never felt so loved and cared for. I have a team of medical professionals fighting on my behalf. I have friends I haven't seen in years reaching out, visiting and offering their support. But best of all is my family.

My wild and crazy sisters, Debra and Kim, and their wonderful husbands, Keith and Roger, travelled from North Carolina and Florida to spend a week with me. They came to catch up and have fun, but to also provide support and lend a hand. As I mentioned a few weeks ago, we are downsizing from our very large home of twenty-five years into a condo that's dramatically smaller, so they, along with Arlene's best friend, Tracey, who's just like family, spent most of each day helping us rummage through shelves, cabinets and boxes to determine what we keep, sell or pitch. It was an emotional week preparing for the estate sale, but in many ways, it's the history of our forty-five years of marriage, laid out on tables for others to buy. My sister's sense of humor and free spirit not only made the experience tolerable but fun. I don't see them often enough but when we do see each other, we make it count. I don't know what I'd do without them.

Tracey didn't really know them until this week. She was in complete dismay as my sisters chased down a local police officer to give him a Buster Bar (from Dairy Queen) and to tell the young officer he was appreciated. That's just how they roll.

For those of you who are long-time readers of my column, know that my daughter, Tara Beth, and her husband Jeff, accepted positions in Pasadena, Calif. over four years ago and headed west, with our grandsons, Caleb and Noah. Like most of life's twists and turns, it was a mixture of happiness for their new opportunities and sadness



POSITIVELY
SPEAKING

GARY W.
MOORE

to see them go. Their move wasn't ended with a period but only punctuated with a comma, as they announced this week they are moving back. We are thrilled. I'll never miss one of my grandson's baseball games or concerts again! My only regret is that their move is motivated by my health. My life journey should not dictate theirs, but I was told, “Don't worry about it. I only have one Dad and we want to be close.” Of course, I did the only thing I could do in that moment. I cried. As I said, I've never felt so loved.

In a lighter note, my handsome and smart nephew, Westin, called me on Sunday to tell me about his new dog. He said, “My puppy is two years old and I'm five.”

I responded, “So, you were three years old when he was born.”

Weston paused and said, “He wasn't born. We bought him!” I laughed all day at the enthusiastic innocence of his words.

I've always loved my friends and family, but never fully realized the importance of relationships and how their love can brighten the darkest times. I'm grateful. My heart is full.

For those who say, “I don't have friends,” be a friend. Join a small group at your church. Take up a group hobby that places you in the same room with others of similar interests. Volunteer for a local charity. Join a herd. Be part of a pack. They want and need you as much as you need them, and for most of us ... the day will come when you need their love and support.

Yes, creating meaningful relationships takes effort but it will be effort well spent.

I also hear other say, “I'm estranged from my family.” It's not too late to forgive and forget. It doesn't matter what happened. It was in the past. Unless the relationships are toxic, dangerous or otherwise damaging, make the effort to reconnect. Reach out and rekindle family connections. I don't think you'll be sorry.

We were not created to travel alone. Join the herd.

Gary W. Moore is a freelance columnist, speaker, and author of three books including the award-winning, critically acclaimed, “Playing with the Enemy.” Follow Gary on Twitter @ GaryWMoore721 and at www.garyw-moore.com.

Corn on the Cob: A Simple Pleasure of Late Summer

Corn is not only one of the tastiest pleasures of the summer; it's also one of the most popular, with Americans consuming an average of 6.8 pounds of fresh corn each year!

If fresh corn on the cob is on your menu this season, read on for some tips and tricks to make the sweet treat even more enjoyable. From picking prime corn on the cob to serving up the irresistible ears, the following hints, both old and new - help you serve up your share of the classic summer pleasure.

Freshness Check: Want to ensure fresh, sweet corn on your table this season? Take these tips from farmers: Look for bright green husks that are slightly moist. The silk should be slightly sticky and a pale golden color. If you press gently against the husk you should be able to feel the kernels. Also check out the bottom of the ear, where it was cut off the stalk. If it is brown, the ear was likely not picked that day. If corn kernels are exposed, look for plump kernels in even rows.

Corn Rules: Did you know corn on the cob will lose up to 25% of its sugar content after just six hours of storage at room temperature? That is because from the moment it is picked, the sugar in the corn begins to convert to starch. To keep corn at optimum taste, keep corn chilled at about 36 degrees. Keep corn in the refrigerator with the husks intact until you can cook it. This helps to slow down the sugar to starch conversion, thus maintaining its sweetness longer.

Corn off the Cob: While cutting the corn off the cob removes half the fun of eating it, sometimes it's a necessary task. Ever wonder what is the most efficient way to carve a cob? First of all, use a sharp chef's knife or serrated edge knife to cut off the kernels. Several years ago a New York



TAKE
THE
HINT

KAREN
TRAINOR

paper published what has become a popular kitchen trick to removing the kernels without the mess – use a bundt or angel food cake pan. Simply stand the pointy end of the ear of corn in the pan's center hole to steady it, and slice down to cut the kernels, which fall neatly into the pan.

Milky Way: If you're cutting corn off the cob for a recipe, be sure to get all the milky liquid this way: After the kernels are removed, simply run the flat edge of a knife down the cob, applying a bit of pressure. If you're not using a bundt pan, place cob in a bowl to collect the liquid.

Cooking Corn: If you're boiling corn never salt the water, as that can toughen the kernels. Want to add heighten sweetness of bland corn? Add a teaspoon or two of sugar to the boiling water. Cook for three to five minutes.

Steaming Hot: Steaming corn is a favored way to serve up fresh corn on the cob. If you don't have a steamer, simply put about two inches of water in a large stock pot. Stand ears upright in the pan. Cover and cook on high until water boils. Turn off heat and allow to steam with cover on for about 7 to 9 minutes.

Kernels of Knowledge:

- *The more silk on the cob, the more the kernels!
- *The number of rows on a kernel is always an even number.
- *There are about 800 kernels in 16 rows on each ear of corn.
- *It takes about two ears of medium sized corn on the cob to equal a cup of kernels.
- *The corncob (ear) is actually part of the corn plant's flower.
- * The world record for eating corn on the cob stands at 57 Ears of Florida

Labor Day: Make investments work as hard as you do



FINANCIAL
FOCUS

JEFF BURDICK

Labor Day is almost here. Of course, this year, the holiday may have a different impact, given the employment-related stress and disruptions stemming from the coronavirus. Yet, it's good to recognize the value of work and its importance in achieving your life's goals. But if you're going to retire comfortably and reach your other financial objectives, you also need to invest – and your investments need to work as hard as you do.

To help make this happen, you need to know why you're investing in the first place. You likely have a variety of financial goals, including short-term ones – a long vacation, a new car – and long-term ones, such as a comfortable retirement and the desire to leave a legacy for your family. But you can't invest in the same way for these goals. For example, when you're planning an overseas vacation for next year, you want a certain amount of money to be available at a certain time, so you'll want an investment that offers a high degree of preservation of principal. However, when you're saving for a retirement that may be decades away, you need to consider investments that offer growth potential. In any case, you can help your investments work efficiently for you by matching them with specific goals.

You also want to keep your investments “on the job.” In the immediate aftermath of large market downturns, such as we saw earlier this year, many people simply stopped investing altogether. But taking a “time out” can be costly. For one thing, when you stop adding to your investment portfolio, you reduce its growth potential. Furthermore, if you're on the investment sidelines, you might miss out on the next market rally – and the biggest gains often happen in the early stages of these rallies.

Not everyone simply abandons the investment world following a downturn, though – some people just put more money into cash and cash equivalent accounts. And while it's a good idea to have enough cash on hand for emergencies (about three to six months' worth of living expenses), you may not want to have cash as the major component of your portfolio. Cash simply doesn't “work” hard enough in the sense of providing you with long-term growth opportunities.

So, whether the markets are moving up, down or sideways, it's important to keep investing and keep a reasonable percentage of growth-oriented investments in your portfolio, with the exact amount depending on your goals, risk tolerance and time horizon. These investments will fluctuate in value, but the longer you hold them, the more the impact of short-term drops may be reduced, especially if you maintain a diversified portfolio, although diversification, by itself, can't ensure a profit or protect against loss in a declining market.

Finally, here's one other step you can take to help keep your investments working hard: Check up on them periodically. Review your portfolio at least once a year to determine if it's still helping you make progress toward your goals. If it seems like you're falling behind, you may need to adjust your investment mix.

You've probably discovered that hard work pays off for you in just about every endeavor – so why should it be any different with investing? Keeping your investments working diligently can help boost your chances of achieving your important financial goals.

This article was written by Edward Jones for use by your local Edward Jones Financial Advisor. Please contact Jeff Burdick, your local Edward Jones Advisor in Sturbridge at 508-347-1420 or jeff.burdick@edwardjones.com.



www.StonebridgePress.com



THE GREAT
OUTDOORS

RALPH
TRUE

This
past
week,
this

writer and my granddaughter Andrea Henchey decided it was time to go fishing at Galilee, R.I. for seabass and Fluke. She decided to take along her son Logan, but I was a bit nervous about taking him because of his young age of five years. He is on the water a lot at their lakefront home on Quinsigamond in Shrewsbury, so we brought him along. They arrived at my residence in Uxbridge at 6 a.m., and we were on the road at 6:15 a.m.

The little guy was wide awake and ready to go fishing, and kept asking how much longer it would be before we got to the ocean. “Not long,” we replied, and he went back to playing with his iPad! After making a few unscheduled stops along the way, we finally arrived at the boat ramp. It was time to catch some live bait with a small net. Logan was all excited and had a great time helping with catching the bait. We quickly launched the boat and we headed out through the Breachway of Galilee’s West Wall.

After a ten-minute run out to 45 feet of water I brought the boat to a stop and we started fishing. Placing a mummy and a piece of squid strip on a hook, Andrea lowered the bait to the bottom. She started to get a bite within seconds of hitting the bottom. Logan quickly started to reel the fish in with his mother’s help, as this week’s picture shows. It was lock and load action for three



This writer with two 20-inch fluke caught the week before.

hours and then the tide flow stopped. Fishing was slow and we decided to head for the boat ramp. We were also running out of food to eat, which is not good. The fast action sure gave us an appetite, as it always does when fishing. The largest seabass weighed in at five pounds, with others just making the 15-inch size limit. There were a lot of short fish including a few nice fluke.

As we pulled into the boat ramp,



Andrea Henchey and her son Logan reeling in fish.

we had to wait for a couple of boats to leave, so I parked the boat at the very end of the right-hand dock. The water is pretty deep there. Andrea grabbed the rope from the bow and decided to jump out of the boat and onto the dock before the boat was secured. As she jumped from the boat, she quickly found herself in the water! She had one foot on the dock and one on the boat prior to the big splash, which quickly caused a spread eagle, sending her into the ocean.

Falling between the boat and the dock has caused serious injury for many boaters, but she was lucky she did not sustain any injuries other than a bit of humiliation, as others boaters looked on. I went to retrieve the car and trailer after securing the boat properly, and making sure she did not get injured. Her son Logan did not know what to make of his mother’s actions, and stared to look for more bait fish that were visible in the shallow water.

I quickly floated the boat onto the trailer and pulled the boat out of the ramp, placing it out of the way of other boaters launching and retrieving their boats. Andrea quickly changed her wet clothing for dry ones, and was ready to help secure the boat for the ride home. “Can I do anything to help Pop?” she

replied! I gave her a bucket full of live mummies to carry back to the water and release them. She was not 50 feet from the ramp when I heard her say “Oh No!” Now what? It seems the handle on the bucket broke and the live bait was flopping all over the ground. “Forget it,” I replied.

As she approached the boat she asked if she could do anything else! I said “Yes, go sit in the car and do not touch anything else!” She laughed and we were on our way home. I really could not have a better granddaughter, and have had many enjoyable times with her and her husband Chris, and my great grandchildren, Logan and Eva. I am extremely fortunate.

A few anglers were loading their boat at the ramp that day and reported catching a few Bonito in the area of the Charlestown Breachway, using flyrods.

Seabass limits have increased to seven fish daily per angler as of Sept. 1 in Rhode Island waters. Seabass are considered to be one of the best tasting fish in the ocean and catching them is exciting. I would recommend holding onto the rod real tight, or it could end up in the ocean.

Take A Kid fishing & Keep Them Rods Bending!

Fall lawn care tips



Photo Courtesy

A healthy lawn is the best defense against weeds.



GARDEN
MOMENTS

MELINDA
MYERS

As summer transitions into fall, it is time to help lawns recover from summer stress. Let the weather and the condition of your lawn help you develop a plan suited to your landscape.

Continue mowing actively growing lawns. Mow high, leaving cool season grasses like bluegrass and fescues at least two and a half, preferably three and a half inches tall after cutting. Warm season grasses like bermudagrass, carpet-grass, centipedegrass and zoysia should be grown at 1 to 2 inches tall, while St. Augustine should be a bit higher at two to three inches for best results. Taller grass is better able to compete with weeds, is more drought tolerant and less susceptible to insects and disease.

Mow often, removing no more than one third the total height. Leave short clippings on the lawn. They will quickly break down, adding organic matter, moisture and nutrients to the soil. Run your mower over long clippings to reduce their size and speed decomposition.

As the tree leaves begin to fall just mow them into small pieces and leave them on the lawn. As long as you can see the grass blades through the shredded leaves your lawn will be fine. And just like the clippings, they add nutrients and organic matter to the soil.

Fertilize lawns in early September and high maintenance northern lawns again around Halloween, but always before the ground freezes. Make sure the last fertilizer application to warm season grasses

is at least one month prior to the average first killing frost.

A healthy lawn is the best defense against weeds. Even with proper care these unwanted plants can bully their way into your lawn. Try digging, root and all, to remove small populations of weeds. Think of it as a workout or way to reduce stress.

If you decide to use a weed killer, try spot treating weeds or problem areas to minimize the amount of chemical used. Select the least toxic or an organic product whenever possible. Whether using traditional or environmentally friendly products read and follow label directions carefully. All these products are plant killers and can cause damage to other plants if not applied properly.

Fall, when the cool season grasses are actively growing, is also the best time to core aerate or dethatch lawns suffering from thatch build up or compacted soil. Overseed thin lawns after core aeration or dethatching. You’ll have better results once the thatch layer is removed or openings exist for the grass seeds to contact the soil and sprout.

Those growing warm season grasses should wait until the lawn greens up in spring or is actively growing in early summer. Avoid doing this when the weather is hot and dry.

Begin implementing some of these strategies and soon you’ll be on your way to a healthier, better looking lawn for the coming growing season.

Melinda Myers is the author of more than 20 gardening books, including Small Space Gardening. She hosts The Great Courses “How to Grow Anything” DVD series and the nationally-syndicated Melinda’s Garden Moment TV & radio program. Myers is a columnist and contributing editor for Birds & Blooms magazine and her web site is www.MelindaMyers.com.

Because I’m in the business of dispensing tips, not inventing them (although I can take credit for some), I’m counting on you readers out there to share your best helpful hints!

Do you have a helpful hint or handy tip that has worked for you? Do you have a question regarding household or garden matters? If so, why not share them with readers of Stonebridge Press newspapers? Send questions and/or hints to: Take the Hint!, C/o the Southbridge Evening News, PO Box 90; Southbridge, MA 01550. Or E-mail KDRR@aol.com. Hints are entered into a drawing for dinner for two at the historic Publick House Inn.

OBITUARIES

Thomas Herold Hitchcock “Tom”

FT. MYERS, FL / STURBRIDGE-Thomas Herold Hitchcock “Tom” of Sturbridge, MA / Ft. Myers, FL died on Tuesday, Aug. 25th in Ft. Myers, FL.

Tom is survived by his wife Barbara; his children, Linda A. Hitchcock of Gig Harbor, WA; Nancy J. McGrade of College Grove, TN; stepson John R. Mulligan of Boston, MA and three grandchildren, Kyle T. McGrade, Erin R. McGrade, and Alexandra A. Mulligan. He was predeceased by his first wife of 23 years, Sarah (Attig) Hitchcock. Tom was born in Waverly, MO, the son of Ralph Herold Hitchcock and M. Elizabeth Thomas. Tom graduated from North Quincy High School in 1955. Upon graduation Tom was employed as a mechanical draftsman with Jackson & Moreland Engineers, Boston, before enlisting in the US Army in 1956, serving in 82nd Airborne Div. Tom graduated from Boston University earning a BFA degree in 1962 and a few years received his Masters degree from BU.

From 1962 to 1973 Tom served as an art and art photography teacher, art director and art history coordinator for school systems in New York and Massachusetts. Tom greatly enjoyed traveling. Tom had a fascination with flying and earned his pilot’s license. In 1972, Tom launched Monogram Aviation



Publications; a family owned specialty book publishing company where he served as CEO for over thirty-five years. He attracted authors from the US and abroad and publishing more than 50 titles dedicated to military aviation subjects. He also authored and illustrated a dozen books on German aviation subjects. He was proud when several Monogram books attained book-of-the-year awards. He served

as a consultant for the National Air and Space Museum’s aircraft restoration division, contributing toward award-winning restorations. In 1993, Tom married Barbara Whitmeyer Mulligan. Tom was an amateur vexillologist and an ardent admirer of old cars and the owner of several old Cadillacs and a long-time active member in the Cadillac & LaSalle Club of America. Tom especially loved animals especially cats.

His funeral was held on Tuesday, Sept. 1st, from the Daniel T. Morrill Funeral Home, 130 Hamilton St., Southbridge, with a Mass at 10:00am at the St. Anne’s Church Pavilion, 16 Church St., Sturbridge. Burial will be in St. Anne’s Cemetery, Sturbridge. Calling hours in the funeral home were held on Monday, Aug. 31st from 4:00 to 6:00pm.

www.morrillfuneralhome.com



At Paradis-Givner Funeral Home, we take great pride in caring for our families, and will work tirelessly to provide you with a beautiful, lasting tribute to your loved one

- Offering the highest level of personalized care
- Traditional Services, Memorial Services, Burial and Cremation
- Arranged services at the time of need or in advance

(508) 987-2100 | 357 Main Street
Oxford, Massachusetts 01540
www.paradisfuneralhome.com

Over 130 years of service to the community

TRAINOR

continued from page A8

Sweet Corn in 12.8 minutes, set on April 28, 2019

Win Dinner for Two at the Publick House

Your tips can win you a great dinner for two at the historic Publick House Historic Inn in Sturbridge! Simply send in a hint to be entered into a random drawing. One winner per month will win a fabulous three course dinner for two at the renowned restaurant, located on Route 131 across the town common in historic Sturbridge.



SOME **CHANGES ARE HARD**, BUT AT LEAST
**WE MAKE REPLACING YOUR
WINDOWS EASY.**

The most hassle-free home improvement project you'll ever have. You won't have to deal with a manufacturer or chase down an installer. We manage the entire process—from building to installation to the warranty—on our windows and doors. And know that we've adjusted our operations to serve you in the safest way possible.

Andersen is the window that every homeowner wants. Renewal by Andersen is the full-service replacement window division of Andersen, and our window is engineered to help save you money on your energy bills and make your home more comfortable.



61,908 other MA and Southern NH area homeowners have trusted us. That means we understand the window and door problems in this area. And our installers are true craftsmen who will completely and thoroughly clean up after your upgrade is complete.

We won't try to "sell" you on vinyl. Poor-quality vinyl windows can discolor, leak and warp just a few years after they're installed, so we refuse to sell them. Our window's Fibrex® composite material is twice as strong as vinyl.

Must call before September 30th

SAVE 20%
on windows¹

SAVE 20%
on patio and
entry doors¹

**DON'T PAY A THING
FOR 1 YEAR**

\$0 DOWN

**0 MONTHLY
PAYMENTS**

0% INTEREST

FOR 1 YEAR!¹

Minimum purchase of four. Interest accrues from the purchase date but is waived if paid in full within 12 months.



Make your home more secure. Book a Virtual or In-Home Appointment



1-800-209-2746

¹DETAILS OF OFFER: Offer expires 9/30/2020. Not valid with other offers or prior purchases. Get 20% off your entire purchase and 12 months \$0 down, 0 monthly payments, 0% interest when you purchase four (4) or more windows or patio/entry doors between 9/1/2020 and 9/30/2020. Military discount applies to all active duty, veterans and retired military personnel. Military discount equals \$300 off your entire purchase and applies after all other discounts, no minimum purchase required. Subject to credit approval. Interest is billed during the promotional period, but all interest is waived if the purchase amount is paid before the expiration of the promotional period. Financing for GreenSky® consumer loan programs is provided by federally insured, federal and state chartered financial institutions without regard to age, race, color, religion, national origin, gender or familial status. Savings comparison based on purchase of a single unit at list price. Available at participating locations and offer applies throughout the service area. See your local Renewal by Andersen location for details. License number available upon request. Some Renewal by Andersen locations are independently owned and operated. "Renewal by Andersen" and all other marks where denoted are trademarks of Andersen Corporation. ©2020 Andersen Corporation. All rights reserved. ©2020 Lead Surge LLC. All rights reserved.

Home Town Service,
Town-to-Town
CLASSIFIEDS
www.towntotownclassifieds.com
1-800-536-5836

Place your ad today!
Call toll free
or visit our website



725 AUTOMOBILES
VEHICLES FOR SALE
1999 F150 118k miles. 4x4 single cab stepside capt. chairs. Loaded Red with Cap \$4,000. 2002 Chevy Silverado 2500 HD black long bed loaded with plow. Low mileage. 67 thousand. \$7500. Would consider partial trade. Call Mike 508-752-7474.

010 FOR SALE
FREE ITEMS
Large Picture Frame, Portable Air Conditioning Unit-plus much more
Please call 508-340-6701 for information

010 FOR SALE
ITEM FOR SALE:
Antique Dark Wood 5 Drawer Bureau size 34" L, 19" W x 48" H \$95.00
Pictures of items available by email at: rec142142@gmail.com 508-434-0630

442 LICENSED DAY CARE
The Commonwealth of Massachusetts Office of Child Care Services requires that all ads placed in the newspaper for child care (daycare) in your home include your license number

725 AUTOMOBILES
1968 FORD T/BIRD LANDAU
2dr. 429 Engine, 91k miles. well maintained. Excellent condition, clean, garage kept. \$12,000 860-774-8624

010 FOR SALE
VERMONT CASTINGS WOOD STOVE
Black enamel model vigilant Great condition. CALL 508-943-5352

APARTMENT FOR RENT
BROOKFIELD
2 BR, 2ND Floor
Off street parking
Available NOW
Electric or Gas Heat
\$580/mo
Has all appliances
No Dogs
Call Dave 413-762-5082

Trailer For Sale
with enclosed porch located at Indian Ranch, Webster, site G13. Completely furnished. All appliances included and extras. Refrigerator, over/under wash/dry, A/C, Heat. View at www.indianranch.com.
Contact Arthur or Sage 508-892-4576.

107 MISC. FREE
Free construction wood
and kindling wood; beams, plywood, 2x4s, 2x6s, 2x8s, good for woodstoves, not for building. Clean. Delivery possible. Ask for J.D. 413-262-5082

010 FOR SALE
COLLECTABLES FOR SALE
kitchen canister sets-1940's set.10 made in Germany. 1960's set 6 matching pitcher and bowls from London & Portugal. German beer steins-oil lanterns. call 860-774-1871

010 FOR SALE
QUALITY
bicycles, pictures, crystal wine glasses, porcelain dolls, figurines, lawn mowers, bookcases and girls toys for sale
CALL: 860-204-6264

WAR RELICS & WAR SOUVENIERS WANTED:
WWII & EARLIER CASH WAITING!
Helmets, Swords, Daggers, Bayonets, Medals, Badges, Rags, Uniforms, etc. Over 40 years' experience.
Call David (508) 688-0847. I'LL COME TO YOU!

25,000 Unique Visitors Every Week!
www.Stonebridgepress.com

284 Lost & Found Pets

*Did you find your pet?
Or find a home for one*



LET US KNOW!!!
Please call us so that we can take your ad out of the paper...
Town-To-Town Classifieds 508-909-4111

CAR FOR SALE
2011 Ford Fusion SEL,
A/C, 4 door, sunroof, good condition, one owner car. USB and bluetooth. Remote starter. Passed inspection in August. Turned 100,000 miles. **Asking \$5300.00 or b/o. If interested 508-892-1679**

LEE'S COINS & JEWELRY \$ BUY & SELL \$
ALL GOLD & SILVER ITEMS Specializing in NUMISMATIC COINS, Bullion Items, gold & silver of any form! Qualified with over 30 years experience & a following of many satisfied customers. We also sell a nice selection of fine jewelry, antiques & collectibles. Bring in your items & see what they are worth. You won't leave disappointed. Honesty and fairness are our best policies! Lee's Coin & Jewelry, 239 West Main Street, East Brookfield (Route 9-Panda Garden Plaza) 508-637-1236 or cell: 508-341-6355

ARTICLES FOR SALE

010 FOR SALE
ARTICLES FOR SALE
Nordic Track Exerciser-\$300
Epson Photo Printer Cd/DVD with program \$650
Car or Truck Sunroof \$100
Rollup School Map \$50
Many Chairs \$25 each.
Electric Fireplace \$140
2 Antique Printing Presses Manufacturing 1885-\$1500 each.
Call: 508-764-4458

HELP WANTED

Looking for handyman to do some carpentry, plumbing, painting, drywall & bathroom re-do.
Need estimate.

Also looking for someone to cut grass, weed wack, and rake this fall
House cleaner needed.
References required.
Call to apply 774-641-7186, Spencer, MA



YARD SALE

Saturday, September 5th
Rain Date:
Sunday September 6th
237 Dudley Southbridge Road Dudley, MA 8am- 2pm

FIRST CONGREGATIONAL CHURCH OF SPENCER

Seeking experienced Custodian/Janitorial support.

Part time 10 - 15 hours per week, self motivated, professional, knowledge of cleaning methods, materials and appropriate equipment for a variety of cleaning projects.

Must work independently and as part of a team.

Resumes can be sent to Jennifer Anderson at jenanderson@charter.net

010 FOR SALE

CANON CAMERA AE-1 MANUAL
With Lens and Flash 52 mm UV 35 mm 52 mm Zoom II 62 mm UV model 202 35-70 mm 1007773 Asking \$150.00 OR BEST OFFER 1-774-230-7555

010 FOR SALE

EXC.SOLID 68" L SHAPED OAK DESK
LHF return 48" Power center with hutch lights & 2 glass doors & Bk case. Original price \$2200. now in like new condition \$1595. 5 drawers & 2 file drawers with key lock. Pictures available on facebook. Click on messenger then. Paulette 508-765-1231

FOR SALE LINCOLN WELDER
Gas portable, electric start 150 amps. 110-220. \$300 CALL: 508-248-7063

Now Hiring!



Infant/Toddler Preschool Teachers NEEDED!

Send resume to
85 Oxford Ave, Dudley MA 01571
or Call 508-943-0129

TOWN OF CHARLTON Seeks PT (22hr) Kitchen Assistant/Cook

for its Senior Center. HS Diploma and one to two years of experience working with seniors in a nutritional or food service program required; experience in a high volume institutional food preparation desirable; or an equivalent combination of education and experience. Must have Serve Safe certification or be certifiable. Must be able to cook. Hiring range 15.43 - 17.05hr, excellent benefits.

Submit completed application to HR. Applications are available online at <https://townofcharlton.net/158/Human-Resources> until position is filled.

Town of Charlton is seeking a FT Administrative Assistant - Building Department

Under the general direction of the Building Commissioner, the Administrative Assistant is responsible for performing skilled administrative and secretarial work. High School Diploma required, Associates Degree in related field desirable, and two to three years of office experience; or any equivalent combination of education and experience. Thorough knowledge of office practices, office equipment and computers software to include MS Word & Excel along with knowledge of applicable Massachusetts General Laws. Hourly rate: 22.31. Deadline for applications is 09/15/2020. Applications can be found at <https://townofcharlton.net/158/Human-Resources>. Email applications along with resume to Lynn.Dyer@townofcharlton.net.

The Town of Charlton is an equal opportunity employer and encourages diversity.

010 FOR SALE

FIREWOOD
3/4 Seasoned/standing dead hard wood custom cut to your specs. Delivered to your home. 12"-14" \$300 per cord. 16-18" \$260 per cord. Call: 508-282-0232

FOR SALE LINCOLN WELDER
Tombstone Style. Plug in. 250 amps. \$250 CALL: 508-248-7063

200 GEN. BUSINESS

205 BOATS

MIRROCRAFT 12 FOOT"V" BOTTOM. MINNKOTA MAXXUM 40 POUND THRUST. VARIABLE DRIVE.VERY LOW HOURS.3 SEATS WITH PEDESTALS .OARS,ANCHOR,TRAILER, SPARE TIRE . ALL VERY GOOD CONDITION.\$1500.00.CALL 508-987-0386 LEAVE MESSAGE.

www.StonebridgePress.com

Automotive

700 AUTOMOTIVE

750 CAMPERS/ TRAILERS

2008 TRAILER FOR SALE
load rite 2 place ATV Trailer. New tires. Asking \$1,000 or best offer. CONTACT 508-248-3707 and leave a message.



Find It In The Classifieds

Got Space?
we do.

Contact Your Sales Representative Today.

508-764-4325

Get HIRED!



JOBS

Find a Career in The Classifieds!



111 East Main Street, Webster, Massachusetts 508-943-9306 508-987-0767 1-800-552-7444
Licensed in MA & CT



Jules
Lusignan



T.A.
King



Maureen
Cimoch



Ellen
Therrien



John
Kokocinski



Adrienne
James

Each Office Independently
Owned and Operated



www.Century21LakeRealty.com • www.WebsterLake.net #1 on the Internet

Listings Always Needed – We're Always Busy Selling!



SHREWSBURY – Waterfront – Flint Pond w/Direct Boating Access to Lake Quinsigamond! The Quiet of Flint, All the Action of Quinsig! Privacy Galore on Sargents Island – 4.27 Acres – 2,000' Waterfront! Beautiful Sunrises & Sunsets! Looking for a Getaway, Principal Residence or Second Home, Winters in Florida, Summers on the Island! Tons of Potential, Do a Little or Do a Lot! 4+ Rm, 1 Bdrm, 1.5 Bath "A" Frame with the Ability to Finish the Walk-out Lower Level, add a Family Rm, Bdrm, Bathrm! Nature Abounds, Visited by Deer, Fox, Eagles & More! In Time for Summer! **\$579,900.00**

OXFORD – 377 Main St! 9 Rm Center Hall Colonial! .59 Acre Corner Lot! Charm of Yesteryear! Eat-In Frpld Granite Kit w/Updated Cabinets, Frpld Din Rm w/Built-in China Cabinet & Butler Closet! Gracious Foyer! Spacious Frpld Liv Rm! Breezeway to a Home Office or an Unfinished Cathedral Ceiling Fam Rm or Craft Rm! Sit on the Front Porch and Enjoy Morning Coffee or Evening Tea! Huge 2-Car Garage w/Loft-Storage Area! Mature Tree Studded Yard! **\$339,000.00**

WEBSTER – 10 Wyman St! Webster Lake Neighborhood Access at Lakeside Beach & State Boat Ramp Near-by! 10,000' Lot! 1 Level Living! 11 Rooms, 4 Bedrooms, 2 Baths! Room for the Extended Family! 2 Complete Living Quarters! A/C! LP Gas Heat! Town Services! 2 Driveways! Fenced Back Yard! 2 Sheds! **\$189,900.00**

DOUGLAS – 102 SE Main St! Start Packing! Spacious 9 Rm Colonial! 2.23 Acres! Center Island Granite Kit w/Soft Close Cabs, SS Appliances! Slider to 24' Deck! Open Floor Plan! Hickory Wood Floors throughout the Kit, Din & Liv Rms, all w/Recessed Lighting! 1st Flr Office or Possible 4th Bdrm w/Oak Hrdwd Flr! Full Bath in the Hall! 2nd Flr w/Full Dble Vanity Bthrm & 3 Comfortable Bdrms, all w/Beautiful Wood Laminate Flrs! Master w/Cathedral Ceiling, Skylight, Ceiling Fan, Bay Window overlooking the Back Yard and a Master Bath! Lower Level w/2 Finished Rms, Utility Rm w/Laundry and Half Bath! 3.5 Baths Total! Recent C/Air, Heat & Roof! 2x26 2 Car Detached Garage! Huge Shed! Nearby Nature Trails & Walum Lake Beach! **\$379,900.00**

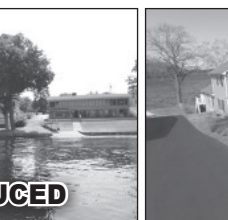
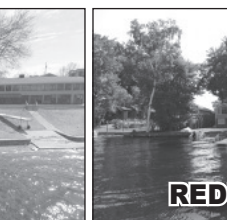
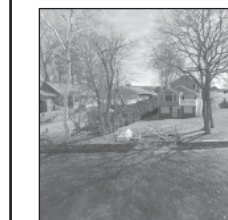
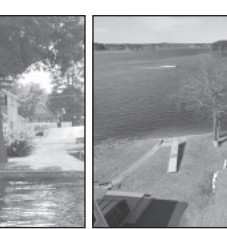
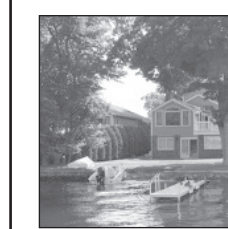


WEBSTER LAKE – 112 Gore Rd! NORTH POND! Sucker Brook Cove! 8 Rm, 3 Bdrm, 1.5 Bath Ranch is Ready for You! Southwestern Exposure! Gorgeous Sunsets! Unique Waterfront! An Open Floor Plan! Lake Views from Nearly All Rooms! 2x6 Construction! Energy Efficient Blinds in Every Room! 4 Oil Tanks - Fill Up Once a Year! C/Air! Gas Fireplace! Whole House Fan! Meticulously Cared For! Large workshop! 3 Car Garage! Carport! 2 Sheds w/Electric! Back Yard is Perfect for Family Gatherings! Plenty of Off Street Parking! Summer is Here! **\$539,900.00**

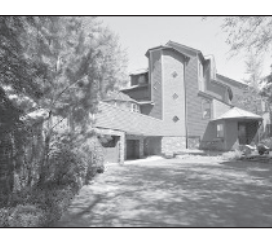
HOLDEN – 315 Holden St! 6 Rm Ranch! Meticulously Maintained! 2 Spacious Bdrms, Full Tiled Bath & 1 Car Garage! Move In Ready! Granite Oak Cabinet Kit w/Tiled Back Splash & JennAir Stove! Frpld Liv Rm! Fam Rm! Gleaming Hrdwds! Perfect Yard w/Major Landscaping this Year! New Roof 2019! **\$344,900.00**

WEBSTER LAKE WATERFRONT – 3 Lakeview Rd! Middle Pond – Reid Smith Cove! Ideal Summer or Yr Round 6 Rm Ranch! Western Expo – Beautiful Sunsets! Near All the Excitement that "Indian Ranch" provides, Dining, Concerts & the Indian Princess! An Arched Bridge to Your Own Private Island, a Great Place to Enjoy the Lake from! Open Flr Plan! Being Sold Fully Furnished! Recent Kit w/Quartz Counters, Breakfast Bar, SS Appliances, Tile Flr & Recessed Lighting! Liv Rm w/Hrdwd Flr, 6x14 Lake Facing Picture Window & Stone Frpld! 3 Remodeled Bdrms w/Ceiling Fans & Hrdwd Flrs! Master w/Bath & Laundry Closet! Screen Porch w/Lake Views! Dock! Carport! Shed! Still Time for this Summer! **\$579,900.00**

GRAFTON – 168 Brigham Hill Rd! 8 Rm Garrison Colonial set on 1.3 Acres! 4 Comfortable Bdrms & 2 Full Bthrms! Freshly Painted, Floors Recently Refinished! Spacious Kit w/Lunch Counter! SS Appliances w/Gas Cook-Top! Grand Dining Rm for Family Gatherings! 19x26 Living Rm w/Pellet Stove! Master Bdrm w/Dble Closets & Hot Tub! Bright & Airy Mudroom out to the 2 Car Garage! Furnace & Hot Water Tank 5 Years Young! Radon tested at 2.5! Newer Roof on Garage & Breezeway! New Well Water Tank Installed! Title V in-hand! Property Abuts Grafton Land Trust - Hiking Trails Right Out Your Back Door! Convenient to Routes 90, 9 & 20! Immediate Occupancy! **\$449,900.00**



WEBSTER LAKE – 62 Bates Point Rd! Middle Pond! Absolute Prime 51' Level Waterfront Lot w/Western Expo! Beautiful Sunsets! Fantastic Panoramic Lake Views! 11 Rms, 6 Bdrms, 4 Bathrooms, 3,269' A/C'd Colonial! Custom SS Appliance Granite Kit! Formal Din Rm w/Cherry Hrdwds! Lake Facing Liv Rm w/Cathedrals, Cherry Hrdwds! Slider to Waterfront Deck! Spacious 1st Flr Master Bdrm w/Full Bath, Cherry Hrdwds & Walk-in Closet! Frpld Lower Level Fam Rm! 1st & 2nd Flr Laundries! 2 Car Garage! **\$949,900.00**



WEBSTER LAKE - 11 Bay View Rd! One of the Lake's Premier Properties! 9,822' of Nice! .68 Acres of Park Like Grounds! 297' Waterfront! \$4 Million Spent, Nothing Spared! 17 Rms! 5 Water View Bdrms, 5.5 Bathrms! Brazilian Cherry Hrdwd Flrs, Grand & Spiral Stairways! Elevator, Ground Flr to Master Suite! In-door Resistance Swimming Pool, Hot Tub & Bthrm w/Steam Shower off Exercise Rm! Billiard Rm! Media Rm! Center Isl Granite Kit w/Viking Gas Range, Sub-Zero Frig, Pantry & Breakfast Bar! Open Flr Plan! Din Area, Fam Rm w/Entertainment Center w/Wet Bar! Formal Din Rm, Frpld Liv Rm & Atrium! Library w/Deck! Waterfront Master Suite w/Office, Bdrm w/Triple Glass Dr to Private Deck w/Lake Views, 3 Walk-in Closets, Bathrm w/Multi-Head Shower, Whirlpool, Dble Vanity, Separate Commode/Bidet/Sink Area! 16 Z's of Updated Geothermal Heat/A/C! Recessed Lights & Fire Sprinklers Through Out! 3 Car Garage! Generator! Slate Roof! Reward Yourself! **\$2,499,900.00**



PUT YOUR TRUST IN US
TEAMWORK AND EXPERIENCE

Jo-Ann Szymczak 774-230-5044

Diane Luong 774-239-2937

Maria Reed 508-873-9254

ReMax Advantage I

25 Union St., Worcester MA 01604



CALL FOR A MARKET ANALYSIS

Licensed in MA & CT



This is the place to sell your home!

Your ad will be
mailed to
50,000+
households
throughout
Southern
Worcester County.



Call your local sales representative today!

1-800-367-9898



43 East Main Street Webster, MA 01570

Fine Realtor Associates to Serve You!

June Cazeault * Laurie Sullivan * Matthew Ross * Lori Johnson-Chausse * William Gilmore II * Brian Bohenko

hope2own.com

508.943.4333

Sharon Pelletier - Broker
Licensed in MA, CT & RI

We Want
Your Listings!

Featured New Listings!

DANIELSON CT- 52 TAFT STREET



Spacious Ranch, 1520±/- Sq Ft 8 room 3 Bedroom, 2 Full Baths. Hardwood Floors throughout. Fireplace family room. FHW/Oil Heat. - New Furnace, Windows, Also, recent Asphalt Driveway! Over sized Garage! 1/2 Acre Lot. Dead end road. Close to I-395! **\$295,500.**

OXFORD - 4 SPICEBUSH LANE



One level living with added 35 x 18 finished walk-out lower level. Cathedral ceilings, skylight dining, hard-wood flooring and central air. Stainless appliances w/large double oven. Over-sized 30 x 14 deck. quiet cul-de-sac! **\$319,900.**

WOODSTOCK CT - 110 JOY RD



NEW LISTING

Quintessential Woodstock Farmhouse w/Spectacular views of Pond. Detached Studio Building! 2.5 Acres. Prof. Landscaped. 5 Bedrooms. Fireplaced Dining, library/Music room. Master Bedroom, 2 Full Baths! Renovated Kitchen. Upstairs, 4 Bedrooms w/Full Bath. **\$425,000.**

OXFORD - 4 LEICESTER ST



LAND LAND Great Opportunity for Developer! Total 8.47 +/- acres. Commuter access to several state highways. Scenic nature views. **\$89,900.**

THOMPSON - 452 FAYAN ROAD



ON DEPOSIT

Impressive Gambrel! Colonial 2, 343 SF, 3 Btrs. 2-1/2 Baths, Main Level Master BR Suite! Private Master sized bath w/whirlpool tub & shower. 2.41±/- PRIVATE Acres! Cathedral wood ceilings & wide-board pine floors! Granite counter-tops, stainless appliances, gas cook-top & ceramic tile floors! 2 bed rooms & a full bath! Gigantic loft/great room with interior balcony! Over-sized 3 car detached garage w/high ceilings, and a huge unfinished 2nd story room! TRULY A FAR-AWAY PLACE NEARBY! **\$398,500.**

WEBSTER - 195-199 THOMPSON RD



3 ACRE COMMERCIAL SITE! APPROX. 550 FT ROAD FRONTAGE ON STATE HIGHWAY RTE 193 A/K/A THOMPSON ROAD. STRATEGICALLY NESTLED BETWEEN TWO (2) I-395 (NORTH & SOUTH) ON-RAMPS & TWO (2) I-395 (NORTH & SOUTH) OFF-RAMPS! PROPERTY DIRECTLY ABUTS I-395! 48'X80' CONCRETE BLOCK BUILDING, 7,680 SF TOTAL! FULL LOWER LEVEL USE & DRIVE IN GARAGE DOOR! HIGH TRAFFIC - HIGH EXPOSURE! WHAT DO YOU HAVE PLANNED?! **\$600,000.**

WEBSTER - 39 OLD DOUGLAS RD



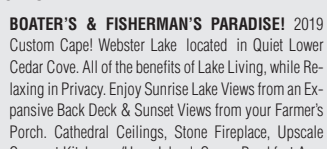
First time offered! Lovingly cared for ranch situated on 1 acre! Recent improvements: windows, siding, gutters & new composite rear deck. Cabinet packed kitchen to the cedar closets. 3 full baths! Master Bath with laundry! Lower Level - Potential for an in-law or extra personal space for the Kiddos!!! Don't miss out on this one!!! **\$338,000.**

On the shores of Lake Chargoggagoggmanchauggagoggchaubunagungamaugg

WEBSTER LAKE - 28 BLACK POINT RD



Office, Laundry Room! 2 BRs with 1 Full Bath. 2nd FL. 1,500 SF+ Basement Potential for FUTURE ENTERTAINMENT or IN-LAW AREA. Rough Plumbed for Bath & Kit. w/ INSIDE & OUTSIDE ACCESS. Central Air! Oversized 2 Car Garage! New 28' Poly Dock! Private Shared Beach! Check out our Video Too!



BOATER'S & FISHERMAN'S PARADISE! 2019 Custom Cape! Webster Lake located in Quiet Lower Cedar Cove. All of the benefits of Lake Living, while Relaxing in Privacy. Enjoy Sunrise Lake Views from an Expansive Back Deck & Sunset Views from your Farmer's Porch. Cathedral Ceilings, Stone Fireplace, Upscale Gourmet Kitchen w/Huge Island, Sunny Breakfast Area w/Built In Beverage Nook, Vaulted Loft, Formal Dining, **NEW PRICE \$625,000.**

WEBSTER LAKE - 100 LAKESIDE AVE



ON DEPOSIT

you need to live is located on the 1st floor. Grand 2 story foyer, cozy fireplaced living room, gourmet kitchen, lake facing dining, formal dining room, media room & spacious 1st floor guest BR Suite w/private bath. Incredible 2nd floor fireplaced lake-facing corner master suite w/luxurious private bath, 3 more 2nd floor BRs & full bath! Something Special! Remember, Timing Is Everything **\$1,075,000.**



WEBSTER LAKE! PANORAMIC VIEWS! BEAUTIFUL SUNSETS! Extraordinary Waterfront Contemporary! Architect designed with Lake Living in mind. Custom Built with Attention to High Quality & Detail. Outstanding open concept, water view from almost every room. Nicely situated on a 25 acre level peninsula, 180±/- prime lake frontage! Enhanced by a all natural shoreline! All **\$1,075,000.**

LAKE SHIRLEY - 647 RESERVOIR RD



SORRY, SOLD!

Lakefront! Lake Shirley! Modern Flare on a Lakefront Colonial! 1st level Formal large entry foyer, living room, gas fireplace, chef kitchen, Impala black granite, center island, 3 season porch, overlooking the lake. 1st Fl. bedroom suite w/shower and jacuzzi tub. 2nd floor Master Suite! Lower level Summer kitchen, full bath, game room. Crown moulding & hardwood floors throughout, wired sound system, radiant floors, oversize 2 car garage. Additional Guest House! assisted sale **\$859,000.**



MEET YOUR LOCAL REAL ESTATE PROFESSIONALS

Perfect for Realtors, Mortgage Companies, Banks, Real Estate Attorneys, Home Inspectors, Chimney Inspectors, Lead Removal businesses, Insurance Companies, etc... any business involved in the buying or selling of real estate.

To join this section, please contact your local sales rep, 1-800-367-9898 or email jsima@stonebridgepress.news

EXIT
EXIT Real Estate Executives

Lisa Caron,
full-time
Broker
Associate
GRI, ABR, LMC,
CDPE, SRS,
SRES, PSA

Call: 508-341-8299
Private Office located at:
Dave's Appliance
42 West Main Street
Brookfield, MA
Hours: M-Th 9-6, Fri 9-5
and by appointment

~ www.lisacaron.com ~

CALL FOR A FREE MARKET ANALYSIS
Great Market — Inventory Down
SZYMCZAK SELLS!

Jo-Ann Szymczak
CRS, GRI, SRES
508-943-7669 774-230-5044
joannszymczak@gmail.com

SOLD
Dudley ~ \$430's
90 Old Southbridge Rd

SOLD
Dudley ~ \$319,900
71 Mason Rd

ReMax Advantage 1
25 Union Street, Worcester MA 01604

Licensed in MA & CT

HOME IS NOT A PLACE...
IT'S A FEELING.
Buy with Confidence
Sell with Success
DorindaSellsHomes.com

21

Dorinda O'Keefe - Shea
Realtor
dorinda@c21lovet.com

CENTURY 21
NORTH EAST
OFFICIAL SPONSOR
OF THE BOSTON BRUINS
978.434.1990

Mary Hicks Realtor®

CENTURY 21
North East
OFFICIAL REAL ESTATE COMPANY OF THE BOSTON BRUINS

Direct: 508.612.4794
Home Office: 508.867.2222
www.maryahicks.com

MLS

Please call for all your Real Estate needs
270 Main Street, Spencer, MA 01562
maryangela87@yahoo.com
Each office is independently owned and operated.

Chauvin Excavating LLC
Quality work since 1986
82 Dresser Hill Road, Charlton, MA 01507
Ph: 508-248-5772 • Cell: 508-922-0041
Email: bernie@chauvinexcavating.net
TITLE FIVE INSPECTION SERVICES

Septics Installed & Repaired.
Full Service Site Contractor
Water & Sewer Lines Installed & Repaired
New Home Site Work
License & Insured

ERA Key Realty Services
"Put 36 years of combined real estate experience to work for you!"

Donna Flannery
508-885-6665
donnaflannery.com
donnaflann@aol.com

Kayleen Flannery-Sauvageau
508-612-9843
Kayleen00@aol.com

ERA REAL ESTATE
415B Main Street, Spencer, MA 01562

Jules Lusignan
#1 in Sales 2006-2020
South Worcester County
\$155,252,380 SOLD

Century 21
LAKE REALTY
A 41 Year Company!

111 East Main St., Webster, MA
Thinking of selling? Call 1-800-552-7444
www.Century21LakeRealty.com
www.WebsterLake.net

A Smarter, Safer, More Affordable Way to Earn Your Degree



- ✓ Attend for FREE by qualifying for financial aid. You may even qualify for a free laptop, wifi, and more.
- ✓ Choose from three different types of online classes to fit your learning style.
- ✓ Save up to \$100,000 on your bachelor degree – start at QCC & transfer.
- ✓ We're experts in delivering a remote college experience. Join clubs, engage in activities, work with mentors, receive tutoring/academic support, technical assistance, and more.
- ✓ QCC cares! Our students have access to the college food pantry and emergency funds to ensure success.

508.853.2300 • www.QCC.edu/safe

QUINSIGAMOND Community College **COLLEGE. MADE SMARTER.** **Apply Today!**

Crooked Creek Farm
est. 1993

BEST FARM FRESH MEATS IN CENTRAL MASSACHUSETTS
PASTURE RAISED • NATURAL MEATS

Located in East Brookfield, Massachusetts, Crooked Creek Farm sells local and natural farm raised beef and pork.

10% discounts on the following cuts:
Bone-In Ribeye
Short Ribs
All Beef Roasts
Hamburger

ASK US ABOUT OUR FREE LOCAL DELIVERY!

To purchase your meat packages you can do so by Email or by Phone. Visit our website for cuts and prices.
CALL/TEXT: (508) 868-5902 or (774) 200-7308
www.CrookedCreekFarmMA.com Email: CrookedCreekMA@Gmail.com

Find Us on Social Media

Now Selling Beer, Wine & Liquor!

Luckymart
CONVENIENCE STORE
LIQUOR BEER & WINE
Mobil Gas

Gas customers redeem Your Shaw's Gas Points Here!

122 Main Street, Sturbridge, MA

508-347-9017

Trinity Catholic Academy Presents:
The 25th Annual TCA Golf Tournament
CELEBRATING 25 YEARS

Saturday, September 26, 2020
Heritage Country Club
85 Sampson Road, Charlton, MA

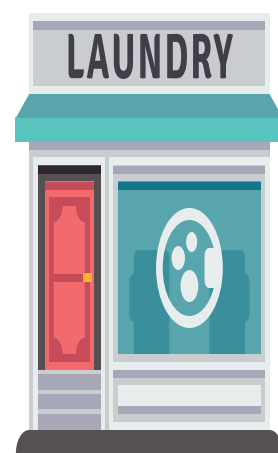
Prizes, Gifts and Contests:
Raffle • Table Prizes • Closest to the Pin • Longest Drive
HOLE IN ONE = \$10,000 CASH PRIZE
PUTTING CONTEST = \$5,000 CASH PRIZE

Steak or Chicken Luncheon in the Clubhouse
Registration Begins at 6:30 am With Coffee and Pastry • Shotgun Start at 7:30 am
Cost: \$130 Per Golfer
For More Information Visit: <https://trinitycatholicacademy.org/golf-classic/>

Committed to Excellence. Committed to Christ.
Representing 150 Years of Catholic Education in Southbridge

TRINITY CATHOLIC ACADEMY, Southbridge, MA K-8 Full Academic Program, new re-opening plan in place!
Enrollment opportunities available, waiting lists for some classes.
Inquire at: www.trinitycatholicacademy.org, or call: Principal, Josie Citta: 508-765 5991

ALL WE KNOW IS LOCAL ~ StonebridgePress.com





Dr. Benjamin Tubo



STEADFAST
— FAMILY DENTAL —

ACCEPTING NEW PATIENTS
824 Southbridge St., Auburn MA
(508) 832-8826
www.SteadfastFamilyDental.com

**General Family
Cosmetic & Implant Dentistry**
.....

- Same Day Crowns
- Cone Beam CT 3D X-Ray
- Computer Guided Implant Surgery
- Six Month Smiles - Clear Braces
- Veneers
- Dentures
- And More

For more information
follow us on







**A REWARDING
CAREER AWAITS AT
Quaboag**

Rehabilitation
and Skilled
Nursing Center

**Start your career
off right –
Come work for us!**

**WE ARE
CURRENTLY
HIRING!**

FT Unit Manager
Evening Nursing Supervisor M-F
FT 3p-11p Nurse
FT 7a-7p Nurse
FT 7p-7a Nurse
Mon-Fri Wound Nurse
FT 11p-7a CNAs
PT Housekeeper/laundry aide
PT Dietary aide

We are a
**DEFICIENCY
FREE**
Community Facility
We offer Great Benefits!
Health and Dental
Flexible schedules



LOOKING FOR A NEW CAREER?
For a limited time we have CNA scholarships available
to the right applicants.
Please inquire for further information.
Please contact Julie Stapleton at: (508) 867-0626
or email your resume to JStapleton@QOTCMA.com

Quaboag
Rehabilitation and Skilled Nursing Center
47 East Main St., West Brookfield, MA 01585

CELEBRATE WITH US

*Office
Open House*



Mary McCarthy
(978)270-1401



Diane Strzelecki
(508)335-2384



Angela Clark
(508)410-1319



Jillian DeGrace
(860)315-3636



Juliana Danquah
Broker / Owner

196 W. MAIN ST.
DUDLEY, MA 01571
SEPTEMBER 10, 2020
FROM 11 AM TO 5 PM
COVID -19 Protocol followed

CENTURY 21
XSELL REALTY



If it's important
to you,
It's important
to us.

StonebridgePress.com

LABOR DAY SALE
OVER 3000 APPLIANCES IN STOCK FOR IMMEDIATE PICK-UP OR DELIVERY
WE HAVE MORE IN STOCK THAN ANY OTHER STORE!

MATTRESS SALE!

TWIN: Reg. \$299 NOW \$199	FULL: Reg. \$499 NOW \$299	QUEEN: Reg. \$599 NOW \$299
-------------------------------	-------------------------------	--------------------------------

**GAS GRILL SALE
OVER 500 IN STOCK!**

**AIR CONDITIONERS
OVER 1000 IN STOCK!**

DEHUMIDIFIERS IN STOCK!	FRENCH DOOR ICE & WATER REFRIGERATOR Reg. \$1999.99 \$1699.99	18 CU. FT. REFRIGERATOR Reg. \$799.99 \$699.99	DELUXE TOP LOAD WASHER Reg. \$499.99 \$449.99	SAMSUNG DELUXE GAS STOVE Reg. \$799.99 \$699.99	GE FRONT LOAD WASHER \$699.99
	7300 LG WASHER OR DRYER \$749.99	FAMOUS MAKER GAS OR ELECTRIC RANGE Reg. \$499.99 \$429.99	KITCHENAID DISHWASHER Reg. \$899.99 \$799.99	MAYTAG TOP WASHER Reg. \$699.99 \$599.99	GE SELF CLEANING SMOOTH TOP STOVE Reg. \$649.99 \$549.99
E-BIKES IN STOCK!	SIDE BY SIDE STAINLESS STEEL REFRIGERATOR Reg. \$1699.99 \$1199.99	DELUXE ELECTRIC DRYER Reg. \$499.99 \$429.99	OVER THE RANGE MICROWAVE OVEN Reg. \$219.99 \$189.99	DELUXE DISHWASHER Reg. \$399.99 \$329.99	LG FRONT LOAD WASHER Reg. \$899.99 \$799.99

TV SALE

65" LG	Reg. \$649.99	\$569.99
70" Smart	Reg. \$799.99	\$599.99
Vizio 58"	Reg. \$449.99	\$369.99
43" LG	Reg. \$349.99	\$299.99
32" Smart TV		\$159.99

WE HAVE BIKES IN STOCK

FREEZERS ARE BACK IN STOCK

WHITCO

PRICES GOOD WHILE SUPPLIES LAST
INSTANT FINANCING UP TO \$10,000
Check www.whitcosales.com for special coupon

Hours: : Mon.-Sat. 10am-9pm
Sunday Noon-7pm
140 Main St., Spencer, MA
508-885-9343